



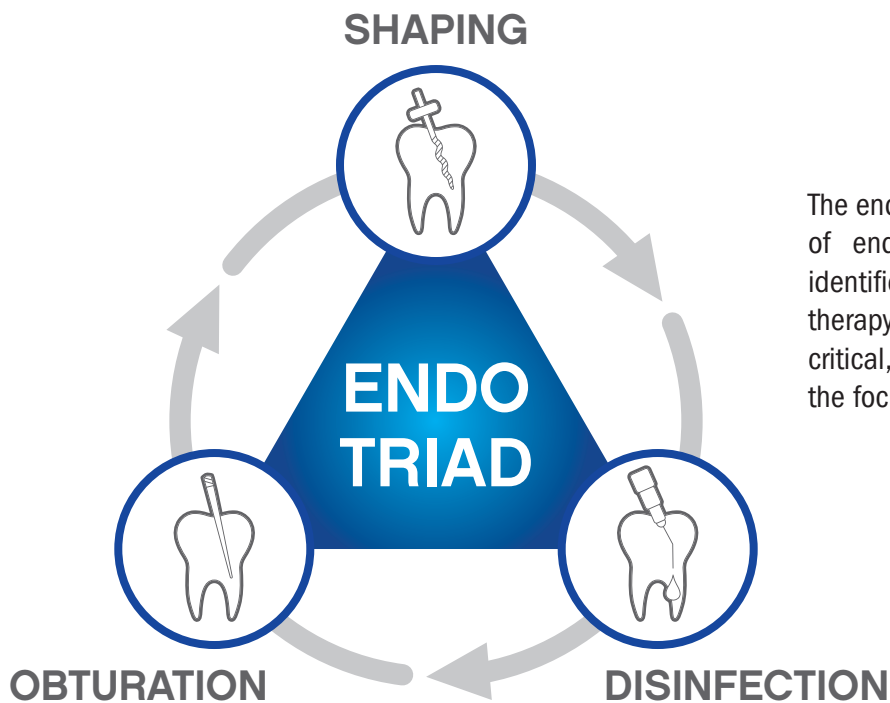
BRASSELER
USA®



ANATOMICALLY **C**ENTERED
ENDODONTICS™

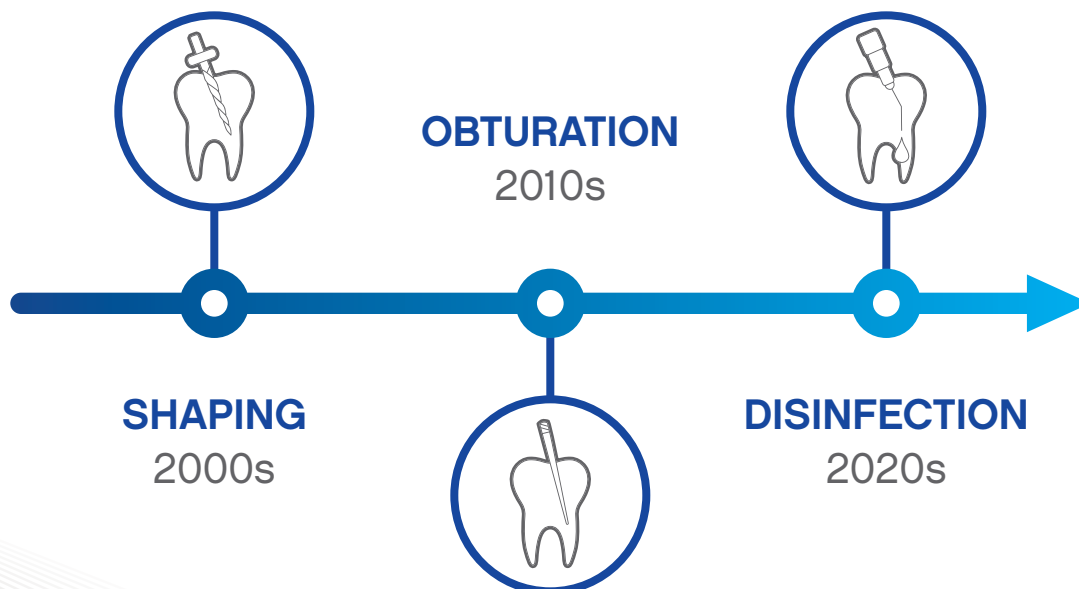
BY YOUR SIDE

CHANGING PARADIGMS IN ENDO, SAME FUNDAMENTAL GOALS



The endodontic triad is the cornerstone of endodontic success and clearly identifies the primary goals of root canal therapy. While all three components are critical, as new technologies emerge the focus tends to shift.

In the 1990s-2000s the focus was on cleaning and shaping with the advent of NiTi rotary files. In 2008 the introduction of BC Sealer revolutionized endodontics by allowing for minimally invasive shaping via zero shrinkage and bonded obturation. The introduction of advanced irrigation devices has now moved the focus towards disinfection.



THE CHALLENGE

To embrace a minimally invasive cleaning philosophy, clinicians must weigh the pros and cons of adopting emerging technologies. Recently the industry has developed a multitude of advanced cleaning devices, but these come at a premium cost and require special training.

THE ACE PHILOSOPHY

ACE is a philosophy and workflow that is designed to be accessible to all clinicians. It utilizes modern material science to maximize success and efficiency in the three principal objectives of the endodontic triad:

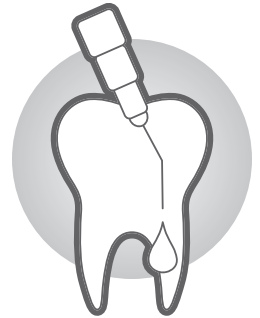
SHAPING



- ▶ We should only shape the canal to the extent needed for optimal disinfection and not allow the obturation material or technique to dictate the shape.
- ▶ We strive to maintain an anatomical shape and thereby preserve tooth structure.
- ▶ We employ a single adaptive instrument (XP-3D™ Shaper+) to maximize dentin preservation while also maximizing clinical efficiency. Our shaping instrument actually aids in the disinfection stage.

DISINFECTION

- ▶ We utilize an all-in-one irrigation solution called Triton®, which simultaneously dissolves inorganic and organic debris, aided by the use of a shaping instrument that debrides through agitation of the novel disinfecting solution.

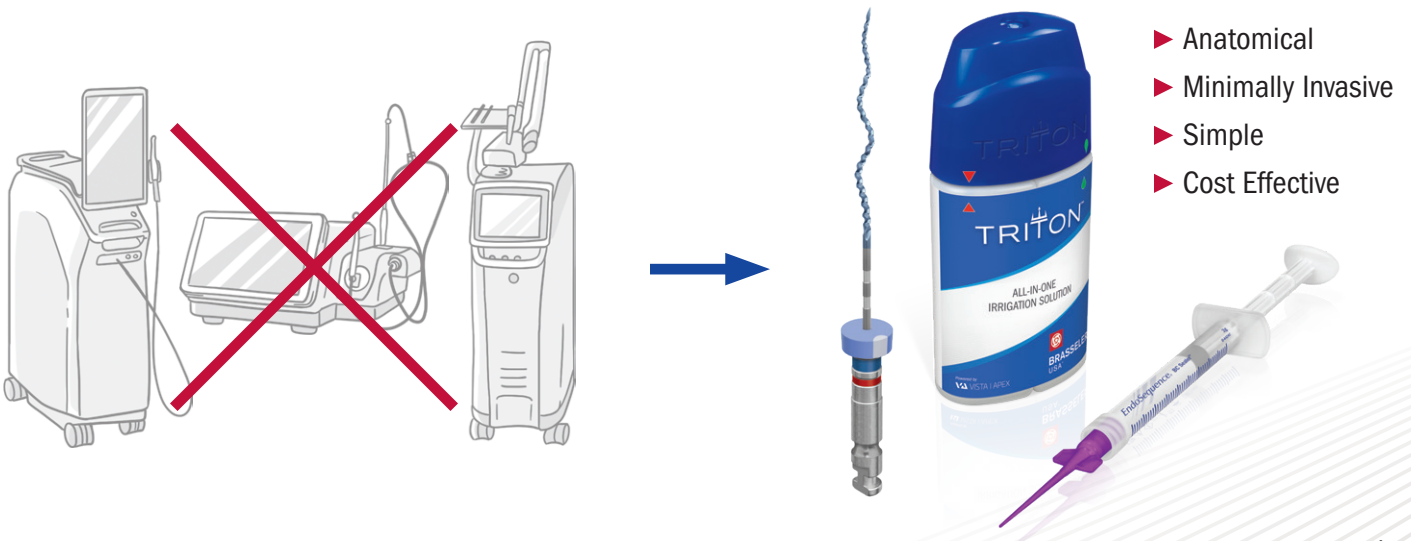


OBTURATION

- ▶ We obturate using the market-leading EndoSequence® BC Sealer™, which allows for zero shrinkage and bonded obturation at room temperature while also providing maximum antibacterial effect and biocompatibility.



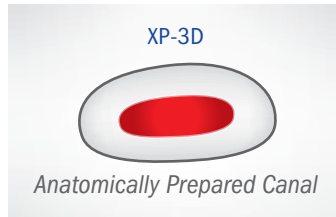
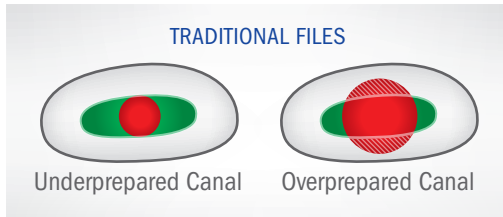
ACE YOUR ENDO!





XP-3D

XP-3D addresses the shortcomings of traditional NiTi instrumentation and ushers in a new biologic standard of care in endodontic instrumentation. Conventional NiTi files can only create round shapes, forcing clinicians to choose between underpreparation or overpreparation of the canal. XP-3D adapts to the canal and cleans three-dimensionally with very low stress to the instrument and the dentin:



- Dentin
- The canal (area to be cleaned)
- Area cleaned
- Weakened dentin

XP-3D™ SCOUT (4/Pack)

File/ Tip ID	Tip Size	21 mm (Stopper)	25 mm (Stopper)
△ White	15	5028594U0	5028593U0

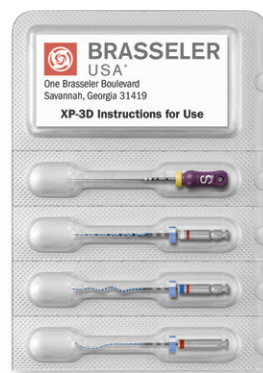
XP-3D™ SHAPER+ (3/Pack)

File/ Tip ID	Tip Size	21 mm (Stopper)	25 mm (Stopper)	31 mm (Stopper)
▲ Blue	30	5028597U0	5028598U0	5028599U0

XP-3D™ FINISHER (3/Pack)

File/ Tip ID	Tip Size	21 mm (Stopper)	25 mm (Stopper)
▲ Red	25	5025842U0	5024933U0
▲ Blue	30	5025844U0	5025843U0

XP-3D™ PROKIT (4/Pack)



XP-3D™ APICAL VERIFIER (6/Pack)

File/ Tip ID	Tip Size	25 mm (Stopper)
▲ Red	25	5030079U0
▲ Blue	30	5030080U0
▲ Green	35	5030081U0
▲ Black	40	5030082U0
△ White	45	5030083U0
▲ Yellow	50	5030084U0
Assortment	25-50	5030085U0

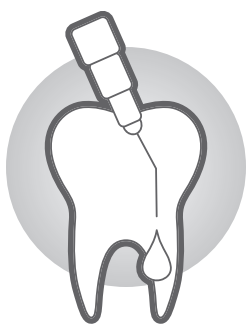


- 1 K-File #10/.02
- 1 XP-3D Scout #15
- 1 XP-3D Shaper+ #30
- 1 XP-3D Finisher #30

21 mm (Stopper)	25 mm (Stopper)
5028596U0	5028595U0

STERILE R





TRITON[®]

ALL-IN-ONE IRRIGATION SOLUTION

Unlike traditional irrigants or other advanced 2:1 solutions, Triton works differently by avoiding the use of EDTA and CHX altogether. The non-NaOCl components in Triton proactively dissolve the dentinal debris allowing for a lower concentration of NaOCl to be exposed to organic debris without as much buffering. Synergistic and simultaneous dissolution of organic and inorganic debris permits the clinician to use lower volumes of irrigation solution and ensure maximum clinical efficiency.

TRITON VS. TRADITIONAL IRRIGATION

- ✓ Multi-functional single irrigation solution reduces chair time, procedural steps, and overall irrigation costs
- ✓ Simultaneous organic and inorganic debris removal
- ✓ Patent-pending composition allows for a lower concentration of NaOCl to be used while providing improved efficacy
- ✓ More effective at smear layer removal vs. NaOCl with EDTA
- ✓ Dissolves organic tissue up to 1.7x faster than traditional NaOCl

COST-EFFECTIVE

Not only will Triton reduce chair time by eliminating the need for multiple irrigation solutions and sterile water rinses, but it also reduces the number of single-use disposable syringes and tips you'll require. In some cases, Triton can cut your total irrigation cost per procedure in half.



Procedural Step and Irrigation Cost Comparison*

	NaOCl+EDTA+CHX	NaOCl+EDTA	2:1 Solutions	Triton
Solutions Used	3	2	2	1
Syringes Used	3	2	3	1
Tips Used	3	2	3	1
Water Rinse Required	Yes	Recommended	Yes	No
Avg. Tip+Syringe Cost per Procedure	\$3.84	\$2.97	\$3.84	\$1.28
Irrigation Solution Cost per Procedure	\$1.19	\$0.85	\$2.38	\$1.87
Total Irrigation Cost per Procedure	\$5.03	\$3.82	\$6.22	\$3.15

*Data on file. The average general practitioner does 115 root canal therapies a year, making the total annual irrigation cost with Triton only \$362.25 in 2021.
Clinical consideration: A sterile water rinse is recommended before placing CHX or a CHX-containing "2-in-1" solution to avoid a Phenolchloroaniline reaction.



EndoSequence® BC Sealer™

Unlike conventional base/catalyst sealers, BC Sealer utilizes the moisture naturally present in the dentinal tubules to initiate its setting reaction. This highly radiopaque and hydrophilic sealer forms hydroxyapatite upon setting and chemically bonds to both dentin and to our bioceramic points (EndoSequence BC Points). BC Sealer is anti-bacterial during setting due to its highly alkaline pH and unlike traditional sealers, BC Sealer exhibits absolutely zero shrinkage!



EndoSequence® BC Sealer™:

- 1 2g syringe
- 15 Intra-Canal Tips
- 1 Instructions for Use (IFU)
- 1 Safety Data Sheet (SDS)

Order No. 5017560U0

EndoSequence® BC Sealer™ Bulk:

- 2 1.6g syringe
- 25 Intra-Canal Tips
- 1 Instructions for Use (IFU)
- 1 Safety Data Sheet (SDS)

Order No. 5029291U0



Now featuring improved BC Tip, which preserves material by 62% vs. original tips

EndoSequence® BC Sealer™ HiFlow™:

- 1 1.5g syringe
- 15 Intra-Canal Tips
- 1 Instructions for Use (IFU)
- 1 Safety Data Sheet (SDS)

Order No. 5026825U0

EndoSequence® BC Sealer™ HiFlow™ Bulk:

- 2 1.5g syringe
- 25 Intra-Canal Tips
- 1 Instructions for Use (IFU)
- 1 Safety Data Sheet (SDS)

Order No. 5030783U0



BC Sealer™ HiFlow™ is optimized for warm obturation techniques



MINIMUM WASTE BC TIPS

87% less waste vs. standard tips

15-Pack 50-Pack

5027507U0 5028585U0



	BC Sealer and Points	Your Current System
Biocompatible and Osteogenic	✓	?
Chemical Bond of Sealer to Dentin	✓	?
Chemical Bond of Sealer to Filling Material	✓	?
Cost Effective (Considerably Less Expensive Than Carriers)	✓	?
Highly Antibacterial (12+ pH upon setting)	✓	?
Highly Radiopaque	✓	?
Hydrophilic	✓	?
Hydroxyapatite Producing	✓	?
Ideal Working and Setting Time	✓	?
User Friendly (Premixed Syringable Sealer)	✓	?
Zero Shrinkage of Sealer and Filling Material	✓	?
3-D Bonded Obturation at Room Temperature	✓	?

K0207 BC Obturation Kit (.04 Taper):

- 1 BC Sealer
- 15 Intra-Canal Tips
- 1 Assorted BC Points Wheel (.04 Taper)
- 1 Instructions for Use (IFU)
- 1 Safety Data Sheet (SDS)

Order No. 5019504U0

K0208 BC Obturation Kit (.06 Taper):

- 1 BC Sealer
- 15 Intra-Canal Tips
- 1 Assorted BC Points Wheel (.06 Taper)
- 1 Instructions for Use (IFU)
- 1 Safety Data Sheet (SDS)

Order No. 5019505U0

*Research and other support materials available at www.BrasselerUSA.com/Bioceramics

TESTIMONIALS



“Anatomically oriented and conservative root canal preparation has been the best approach for long term success in endodontics for a long time. The ACE approach allows us to cut less dentin, to enhance the irrigation process significantly, and to seal canals with the best science has to offer today. ACE is not a new instrument, not a new material, but the combination of scientifically proven techniques and materials in one simple, biologically driven, and inexpensive workflow.”

— Alex Fleury, DDS, MS

“Minimally invasive root canal therapy is easily achieved thanks to the ACE workflow: XP-3D Shaper+, Triton, and BC Sealer. This makes the procedure flow faster, easier, and (most importantly) more anatomically centered. I can attest that Anatomically Centered Endodontics is user friendly and can be easily implemented by clinicians at any level.”

— Chafic Safi, DDS, MS



CASE STUDIES

Courtesy of Chafic Safi, DDS, MS

CASE 1



Pre-Op

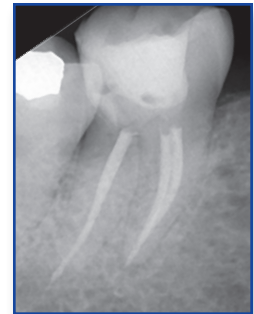


Post-Op

CASE 2



Pre-Op



Post-Op

CASE 3



Pre-Op

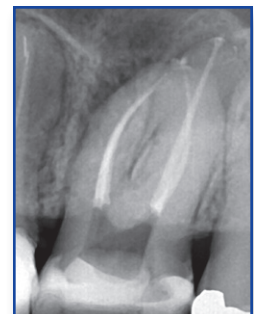


Post-Op

CASE 4



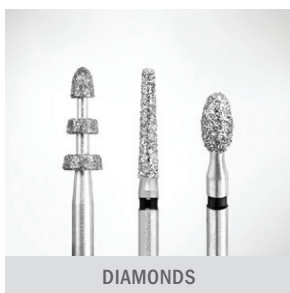
Pre-Op



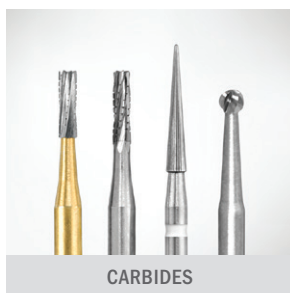
Post-Op

Visit BrasselerUSADental.com/ACE to view the ACE research bibliography, video tutorials, and more!

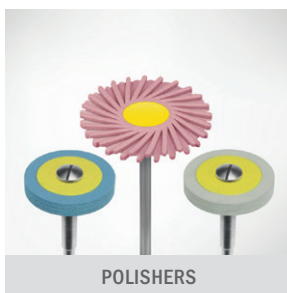




DIAMONDS



CARBIDES



POLISHERS



PROCEDURE SYSTEMS



BIOCERAMICS



Since 1976, our absolute focus has been to develop products and provide services that support the practice of core operatory procedures. Today, Brasseler USA® is the premier dental instrumentation company in North America offering the most extensive selection of dental and surgical instrumentation under one brand.



HANDPIECES



ENDODONTICS



SMALL EQUIPMENT



HYGIENE



HAND INSTRUMENTS



ORAL SURGERY



LABORATORY INSTRUMENTS



Visit our website at BrasselerUSA.com

To order call 800.841.4522 or fax 888.610.1937. In Canada call 800.363.3838

