



BRASSELER
USA®

beam

HEADLIGHT SYSTEMS



Powered by

 PeriOptix®

beam

HEADLIGHT SYSTEMS



See what you've been missing.

Eliminate the need for constant adjustment of overhead lighting, remove shadows in the oral cavity, and improve visual acuity with a Beam Headlight System. Both the corded and cordless systems offer uniform and natural-color output to help ensure the best outcome for your patients.

Bring your own loupes.

Already have a favorite pair of loupes? No problem. Beam Headlight Systems easily attach to frames from a variety of popular manufacturers.

Visit BrasselerUSADental.com/Discover-Beam to learn more about Beam Headlight Systems and see the full list of available mounts.



Maximize clarity and control.

The Beam Headlight System provides an unmatched output of uniform and natural bright light, and features an enhanced spot size to illuminate the entire oral cavity. This innovative headlight is notably smaller and lighter than most available headlights.

Combined with this high-definition headlight is a sleek powerpack that provides a long-lasting charge of 10+ hours. Thanks to soft-touch on/off and intensity adjustments, this powerpack reduces the need to deglove – giving you greater convenience and control.

- Uniform output of natural, bright light
- Enhanced spot size illuminates the entire oral cavity
- Significantly smaller and lighter than most headlights on the market
- Easy-to-use soft-touch on/off and intensity adjustments reduce the need to deglove
- 10+ hours of run time on high

Beam Headlight System Includes: 1 LED Beam Lamp Head with Cable, 1 Beam Lithium-Ion Battery Pack, 1 Battery Pack Charger with AC Adapter, 1 Curing Filter, 1 Elastic Strap, 1 Shirt Clip, and 1 Soft Case



Beam Headlight System

Order No. 5029551U0

Weight: 8 grams
Spot Size: 90 mm
Color Temperature: 5500K
Light Intensity: 46,000 lux
Lithium-ion Battery Life: 10+ hours on high
Charge Time: ~45 minutes
1-Year Warranty

Move through any procedure.

The Beam Cordless Headlight System easily attaches to your current pair of dental loupes. Enjoy the freedom to move throughout your next dental procedure, as well as any other surgical procedure, with confidence and without interference.

- Cord-free design removes the need for heavy power packs and cumbersome cords
- Cleaning ease for a reduced risk of cross contamination
- Optimized spot size eliminates the uncomfortable halo in your patients' eyes while providing uniform and natural-color output
- Pods charge quickly, both reaching 100% in under 2 hours
- 2.5 hours of run time on low; 1.5 hours on high

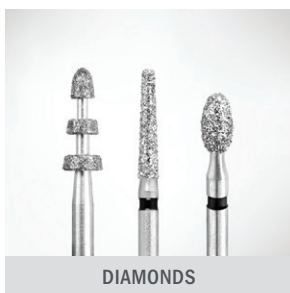
Beam Cordless Headlight System Includes: 2 Rechargeable LED Beam Light Pods, 1 Magnetic Loupe Mount with Hardware, 1 Beam Light Pods Dual Charging Station with AC Adapter, 1 Cleaning Cloth, and 1 Shock-Resistant Carrying Case



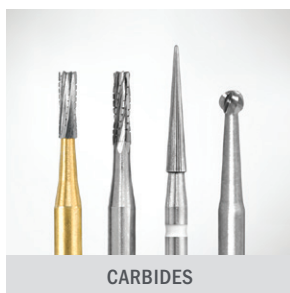
Beam Cordless Headlight System

Order No. 5029550U0

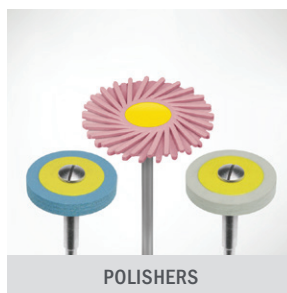
Weight: 28 grams
Spot Size: 70 mm
Color Temperature: 5800K
Light Intensity: 32,000 lux on high, 20,000 lux on low
Lithium-ion Battery Life: 2.5 hours on low,
1.5 hours on high
Charge Time: Under 2 hours
1-Year Warranty



DIAMONDS



CARBIDES



POLISHERS



PROCEDURE SYSTEMS



BIOCERAMICS



Since 1976, our absolute focus has been to develop products and provide services that support the practice of core operatory procedures. Today, Brasseler USA® is the premier dental instrumentation company in North America offering the most extensive selection of dental and surgical instrumentation under one brand.



HANDPIECES



ENDODONTICS



SMALL EQUIPMENT



HYGIENE



HAND INSTRUMENTS



ORAL SURGERY



LABORATORY INSTRUMENTS



Visit our website at BrasselerUSA.com

To order call 800.841.4522 or fax 888.610.1937. In Canada call 800.363.3838

