



BRASSELER
USA®

blu[™]
BRASSELER LASER UNIT





Lasers have revolutionized the way doctors and dental professionals provide care.

Why laser dentistry?

Lasers cut, cauterize, coagulate, and sterilize.

Dental professionals who use lasers perform more procedures, in less time, with better results than those using traditional methods. Their patients also benefit from faster treatment with less overall discomfort.*

*Data on file.

Laser Benefits

Clinician Advantage

- Incremental revenue through additional procedures
- Increased patient acceptance
- Generate patient referrals

Production Efficiency

- Improved access and field-of-vision
- Decreased treatment time in many cases
- Reduced impression retakes

Patient Comfort

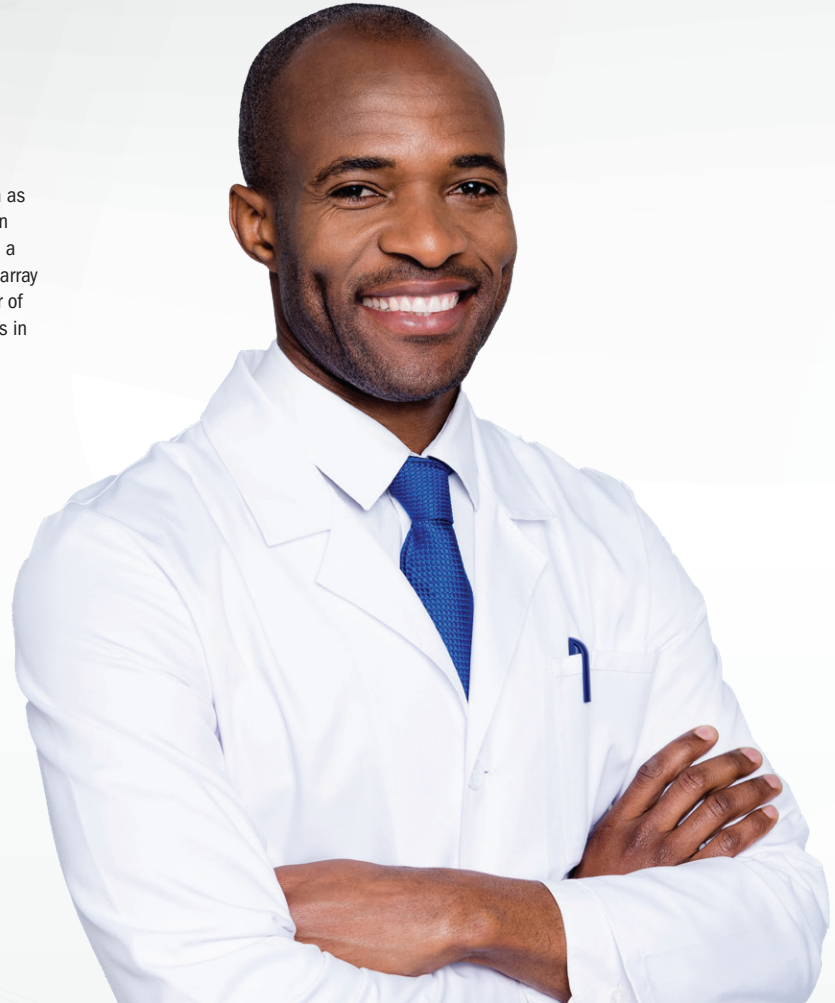
- Healthier approach to tissue management as compared to a scalpel or electrosurge
- Minimal need for anesthesia
- Reduction in post-op discomfort

Laser vs. Traditional Methods

Benefits	BLU Microlaser	Scalpel	Electrocautery
Efficient and effective soft-tissue removal	✓	✓	✓
Excellent hemostasis	✓	✗	✓
Safe around implants	✓	✓	✗
Typically requires no anesthesia	✓	✗	✗
Reduced post-operative pain	✓	✗	✗
Reduced swelling and discomfort	✓	✗	✗
No periodontal pack or suturing required	✓	✗	✗

General Dentistry

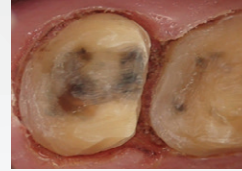
Compared to traditional methods and surgical devices such as electrocautery, a laser is gentler, more predictable, and often times will not require local anesthetic. Diode lasers cut with a very small zone of necrosis, allowing you to perform a wide array of soft tissue procedures with little to no discomfort, no fear of gingival recession, and rapid healing. Immediate hemostasis in most cases is another added benefit.



Laser Troughing

Power: 1.0 watts | Mode: Continuous | Tip: Initiated

By using a diode laser, practitioners are able to obtain bloodless impressions with clearly exposed margins within seconds, eliminating the need to pack cord. Lasing improves visualization of prepared crown margins and aids in hemostasis so crowns and bridges are sure to fit properly every time.



Class V Restoration

Power: 1.0-1.2 watts | Mode: Continuous | Tip: Initiated

Diode lasers provide the practitioner with clear and uncontaminated access to restore class V defects. The technique employs a non-surgical approach for ablation of diseased epithelium at the gingival margins and provides excellent hemorrhage control.



Recontouring

Power: 1.0 watts | Mode: Continuous | Tip: Initiated

Remove excess gingival tissue easily with the use of a diode laser. Common gingival esthetic problems such as excessive gingival display or asymmetrical contours are corrected quickly and painlessly with minimal healing time.



Frenectomy

Power: 1.2 watts | Mode: Continuous | Tip: Initiated

Bloodless and suture-free release of the maxillary or mandibular frenums can be performed with a diode laser. A frenectomy prevents the need for future grafting by stopping the migration of gingival tissue, improving access for oral hygiene, as well as correcting speech impediments.



Gingivectomy

Power: 1.0 watts | Mode: Continuous | Tip: Initiated

Removal of hyperplastic tissue can be done quickly and effectively without the use of sutures or scalpels. Final impressions for restorations can be completed in the same appointment, leading to predictable results with no additional patient discomfort or annoyance.



Hyperplasia

Power: 1.2 watts | Mode: Continuous | Tip: Initiated

Precisely and effectively remove the pseudo-pockets and perform gingival contouring to improve esthetics and oral hygiene, all without local anesthesia, discomfort or bleeding by using a diode laser. This saves time and money with no need to refer out to a cosmetic dentist or oral surgeon.



Implant Recovery

Power: 1.2 watts | Mode: Continuous | Tip: Initiated

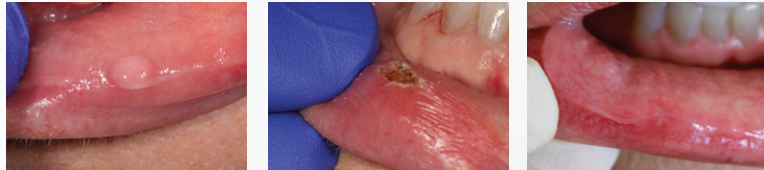
A diode laser allows for quick, easy, and safe removal of excessive gingival tissue around the implant that might otherwise interfere with proper seating at the implant/retainer, making it more stable. Unlike other methods, there is no fear of sparking or heat transferring to the implant which could cause it to fail over time.



Destruction of a Lesion

Power: 1.2 watts | Mode: Continuous | Tip: Initiated

A diode laser used for lesion destruction has several advantages over the scalpel. A diode laser will obtain good hemostasis, a bloodless field, and allow for faster healing while reducing the risk of infection.



Periodontal & Hygiene

Dental hygienists can incorporate soft-tissue diode laser therapy in combination with scaling and root planing in periodontal pockets.*

A diode laser is absorbed well by melanin, hemoglobin, and other chromophores present in periodontal disease. This allows for a non-surgical approach to gain easier access to deeper calculus deposits after ablation of diseased epithelium and hemorrhage control.

Laser-assisted periodontal therapy (LAPT) can be used as an adjunct to traditional scaling and root planing. Laser energy selectively targets only darker, necrotic tissue and leaves healthy tissue alone, allowing for better healing and results. Dental hygienists can also perform other various procedures depending on state law with a non-initiated tip such as biostimulation to aid in the healing of things like aphthous ulcers.

*Refer to State Dental/Hygiene Board for local laws.



Laser Bacterial Reduction (LBR)

Power: 0.8-1.0 watts | Mode: Continuous | Tip: Non-Initiated

Before any routine cleaning it may be warranted to use a laser to eliminate bacteria from the periodontal pocket. By using laser bacterial reduction techniques, you can prevent cross-contamination in the mouth and help encourage healthy reattachment of the gum tissue.



Sulcular Debridement

Power: 0.8-1.0 watts | Mode: Continuous | Tip: Non-Initiated

A diode laser can be used to selectively remove diseased epithelium without harm to the healthy tissue, allowing the healthy tissue to regenerate. In some cases pocket depths can be reduced from <6 mm to pockets of 2-3 mm depth.

Desensitization

Power: 1.0 watts | Mode: Continuous | Tip: Initiated

Specialty & Surgical

Specialists and surgeons have unique patient needs. Some examples include short crowns which do not allow for proper bracket placement, delays in eruption of teeth, and uneven gingival margins. Unlike an Electrosurge, diode lasers are safe to use around metal brackets and implants. These techniques provide a bloodless, dry field with little to no need for local anesthesia and minimal patient discomfort.



Cuspid Exposure

Power: 1.0 watts | Mode: Continuous | Tip: Initiated

A diode laser can easily remove tissue and provide instant access for bracket attachment without the need for local anesthesia. The procedure is fast and painless, resulting in a dry field that is ready for immediate bracket/button attachment, eliminating the need to wait months for passive eruption.



Operculectomy

Power: 1.5 watts | Mode: Continuous | Tip: Initiated

A diode laser allows for easy removal of redundant soft tissue distal to posterior molars. The chronic recurrence of pericoronitis, significant periodontal probing depths or pseudo pockets can be easily managed with this procedure.



BLU Microlaser

The next-generation BLU Microlaser is optimized for all of your periodontal, restorative, and orthodontic procedural needs. This innovative cordless soft-tissue laser enables you to deliver the benefits of laser dentistry to each patient, while increasing practice production across all departments.



- ▶ Lightest-weight wireless soft-tissue diode laser on the market, weighing less than a standard drill
- ▶ Plug-and-play system with 12 preset procedures for all periodontal, restorative, and orthodontic needs
- ▶ 20 minutes of continuous operation at 1.2 watts of power, enough for more than 15 procedures before changing batteries
- ▶ 2 watts of maximum power on continuous wave or pulse mode



Easy-to-Use Controls



Wireless Foot Pedal
with Safety Shroud



Low-Profile Base Charger



Disposable Fiber Tips
Available in 5 mm and 7 mm



Rechargeable
Lithium-ion Batteries



Ergonomic Handpiece

BLU Microlaser

Weight: 1.9 ounces

Laser classification: class IV laser device

Delivery system: optical fiber

Wavelength: laser 808 nm \pm 5 nm

Maximum power: 2 watts \pm 20%

Audible notification: yes

30-minute continuous lasing time @ 1.2 watts; 8-hour
standby time

1-year warranty

BLU Starter Kit

Order Number: 5029467U0

Set Includes:

- 1 BLU microlaser unit
- 2 Lithium-ion batteries
- 1 Wireless foot pedal
- 2 AA batteries for the foot pedal
- 1 Base charger
- 1 Power supply
- Disposable tips – 5 each of 5 mm and 7 mm
- 3 Pairs of safety glasses
- 1 Pack of Initiating paper
- 1 IFU

Laser Accessories

Brasseler uses the highest quality components and fibers in its lasers and accessories. All accessories are designed to allow you to safely and effectively use your laser to its full potential.



Laser Eyewear

Order Number: 5029471U0

Polycarbonate eye protection that's easy to wear and hard coated against scratches, converging protection with comfort and style. (OD>5 at 808nm)



BLU Diode Laser Lithium-ion Battery

Order Number: 5029470U0

Each fully rechargeable battery provides up to 30 minutes of continuous operation at 1.2 watts of power – enough for an average of 15 procedures in the continuous wave mode and over 8 hours of standby time.



BLU Diode Laser Disposable Tips

Standard — 5 mm (25/Pk) Perio — 7 mm (25/Pk)

Order Number: 5029468U0 Order Number: 5029469U0

Single-use, disposable magnetic tips are pre-scored and pre-stripped to virtually eliminate set-up time. Precisely placed magnets perfectly align and secure the pre-threaded fiber every time. Available in 5 mm length, suitable for most applications and a longer 7 mm length for use in laser-assisted periodontal therapy.

BLU Initiating Paper

Order Number: 5029472U0

BLU Initiating Paper is one of the best solutions to trigger hemoglobin absorption towards the optical fiber tip.



Since 1976, our absolute focus has been to develop products and provide services that support the practice of core operator procedures. Today, Brasseler USA® is the premier dental instrumentation company in North America offering the most extensive selection of dental and surgical instrumentation under one brand.

Visit our website at Shop.BrasselerUSA.com

To order call 800.841.4522 or fax 888.610.1937. In Canada call 800.363.3838

