



**BRASSELER**  
USA®

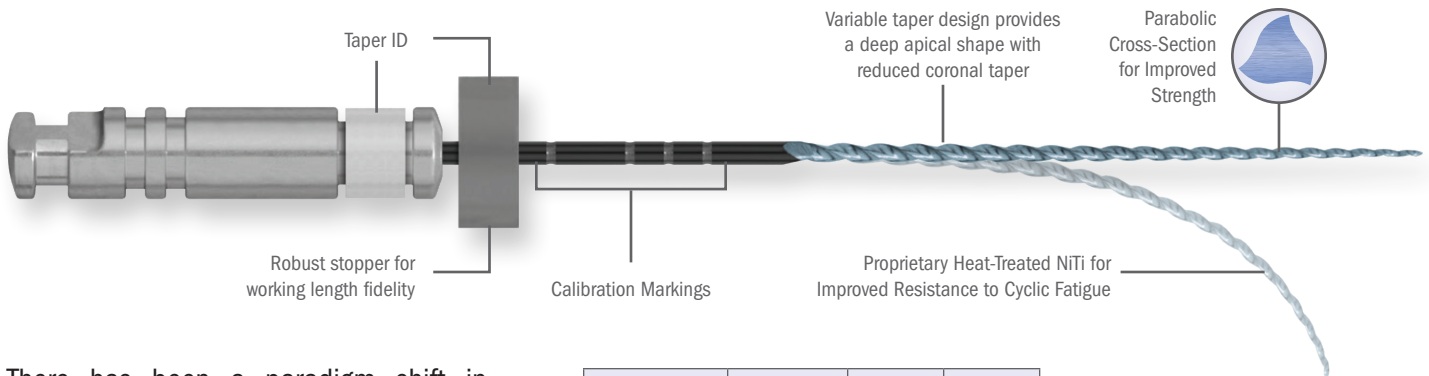
*ENDOSEQUENCE®*  
**VTSCOUT**

BY YOUR SIDE



# ENDOSEQUENCE<sup>®</sup> VTSCOUT

EndoSequence VT Scout Files feature a proprietary variable tapered design that allows for deep apical shaping while preserving coronal tooth structure. This design is comparable to the V Taper™ 2 file, previously sold by SS White®. Minor design upgrades include a short 16mm compression-fit nickel handle and a more robust stopper. These heat-treated NiTi files are extremely resistant to cyclic fatigue and are preferred by clinicians that embrace a minimally invasive shaping philosophy.



There has been a paradigm shift in endodontics in which canal preparations have been transitioning from larger flared shapes to less invasive shapes, especially in the coronal third. This change has coincided with the introduction of advanced irrigation systems and non-shrinking, bonded bioceramic sealer, such as EndoSequence BC Sealer™. EndoSequence VT Scout files feature a maximum flute diameter (MFD) which is extremely conservative. However, the tip portion is designed to provide an optimal “deep apical shape”, which helps to facilitate proper irrigation and obturation.

Cross-Section	Tip Size	D5	MFD
	0.13	0.28	0.48
	0.14	0.29	0.56
	0.17	0.35	0.55
	0.2	0.47	0.7
	0.25	0.52	0.75

## Max. Diameter of Other Popular NiTi Systems

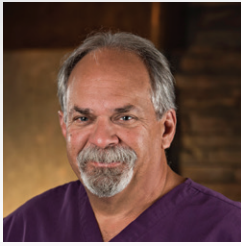
ProTaper Ultimate™	MFD
Slider	.99
Shaper	1.0

Vortex Blue™	MFD
20/.04	0.84
25/.04	0.89

## PRODUCT OFFERING (4/PACK)

File/Tip ID			Tip Size	17 mm Orifice Shaper	21 mm	25 mm
Band	Stopper					
	Purple	Green	13	—	5028563U0	5028568U0
	White	Yellow	14	—	5028564U0	5028569U0
	White	Gray	17	—	5028565U0	5028570U0
	Yellow	Black	20	—	5028566U0	5028571U0
	Red	Black	25	—	5028567U0	5028572U0
	Clear	N/A	25	5028573U0	—	—
Assortment (5/Pack)			13-25	—	5029121U0	5029122U0

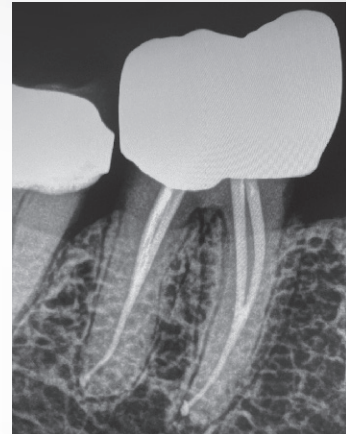
## CASE STUDIES



Dr. Tom McClammy D.M.D., M.S.  
North Scottsdale  
Endodontics & Implantology  
Scottsdale, AZ



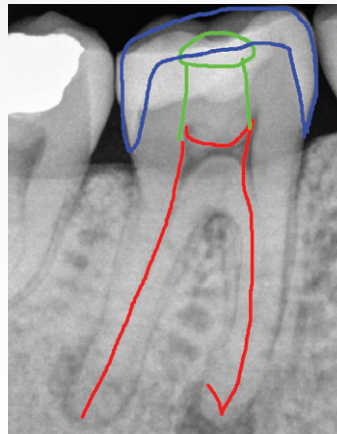
*The EndoSequence VT Scout Files provide a conservative coronal preparation with the deep apical shape that I prefer. The files allow me to confidently navigate extremely tight and curved canals with ease.*



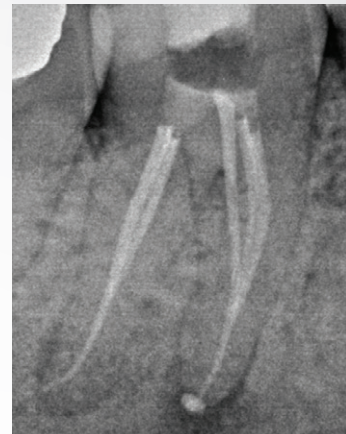
Case shaped with VT Scout Files followed by GentleWave® and obturated with BC Sealer HiFlow



Adam Davis, DDS  
Cumberland Endodontics



Pre-op radiograph/  
treatment planning



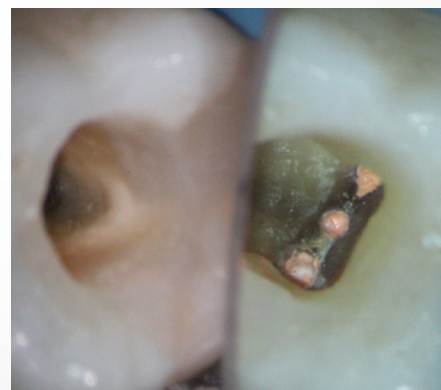
Canals shaped conservatively with VT Scout 14/03, 17/04 and finished with EndoSequence® CM 20/04

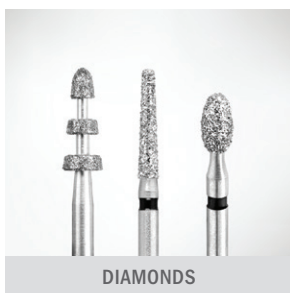


*At Cumberland Endodontics dentin preservation and efficiency are always top of mind. These files allow me to predictably treat difficult cases, preserve dentin, and provide the best outcome for our patients.*

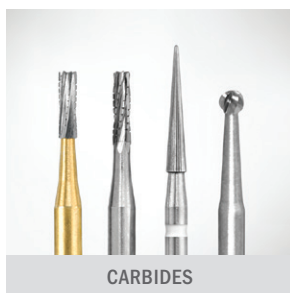


Case obturated with EndoSequence® BC Sealer HiFlow™ and MF gutta percha

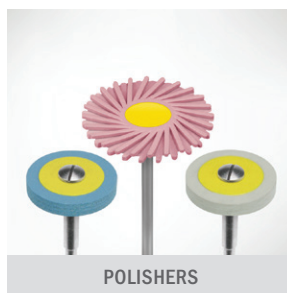




DIAMONDS



CARBIDES



POLISHERS



PROCEDURE SYSTEMS



BIOCERAMICS



Since 1976, our absolute focus has been to develop products and provide services that support the practice of core operatory procedures. Today, Brasseler USA® is the premier dental instrumentation company in North America offering the most extensive selection of dental and surgical instrumentation under one brand.



HANDPIECES



ENDODONTICS



SMALL EQUIPMENT



HYGIENE



HAND INSTRUMENTS



ORAL SURGERY



LABORATORY INSTRUMENTS



Visit our website at [BrasselerUSA.com](http://BrasselerUSA.com)

To order call 800.841.4522 or fax 888.610.1937. In Canada call 800.363.3838

