



BRASSELER
USA®

BY YOUR SIDE

Total-Etch Adhesive System

featuring MPa™ Max Adhesive

- ▶ Maximum Bond Strength
- ▶ Maximum Ease of Use
- ▶ Maximum Prevention of Post-Operative Sensitivity
- ▶ Maximum Adhesive Longevity



 powered by
Clinician's Choice

▶ Order online at BrasselerUSA.com or call 800.841.4522.



©2021 Brasseler USA. All rights reserved. Printed in the U.S.A.

B-5555-11.21

Total-Etch Adhesive System featuring MPa Max Adhesive

Maximum Ease of Use

Max Etch, G5™ Desensitizer, and MPa™ Max Adhesive work together seamlessly to give you a comprehensive total-etch system.

► Total-Etch Technique



After preparation, cleaning and removing caries affected dentin, the preparation is etched for 20 seconds with Max Etch phosphoric acid etchant.



Etchant is rinsed for a minimum of 5 seconds, or until visibly clean. A clean, etched surface remains with no residual pigment or filler to



Application of G5 All-Purpose Desensitizer. Scrub for 10 seconds, damp blot excess. Surface should remain visibly moist.



MPa Max adhesive is applied and brushed/scrubbed gently for 10 seconds.



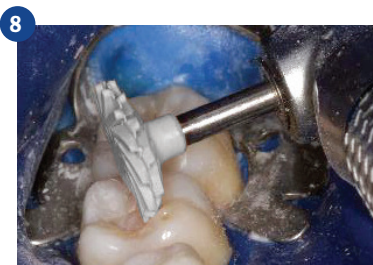
Thin/dry for 10 seconds using 1/4 to 1/2 air pressure. Preparation should appear shiny. Avoid pooling. Light-cure for 10 seconds using a standard light with output >600mW/cm² or 20 seconds if <600mW/cm².



Proceed with composite placement.



Diamond impregnated medium-grit Diacomp™ Feather Lite™ polisher (FLDC5M) initiates the 2-step polishing sequence in just 10-15 seconds, gently diminishing small surface defects without affecting anatomy.



Using light pressure, a diamond impregnated fine-grit Diacomp™ Feather Lite™ polisher (FLDC5) completes the 2-step polishing sequence in about 20 seconds.



The final restoration: a combination of life-like esthetics and a strong, durable dentin/enamel bond.

Dentistry and photography courtesy of Dr. Robert Margeas.

► Order online at BrasselerUSA.com or call 800.841.4522.



©2021 Brasseler USA. All rights reserved. Printed in the U.S.A.

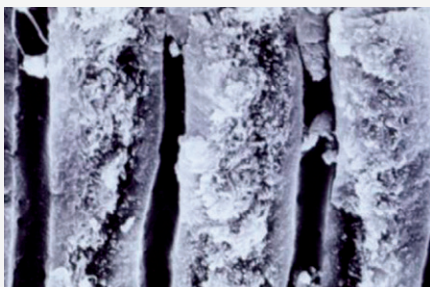


BRASSLER
USA®

powered by
Clinician's Choice

B-5555-11.21

Total-Etch Adhesive System featuring MPa Max Adhesive



G5's glutaraldehyde-based formulation has been proven to help obturate dentin tubules by coagulating plasma proteins.

Maximum Prevention of Post-Operative Sensitivity

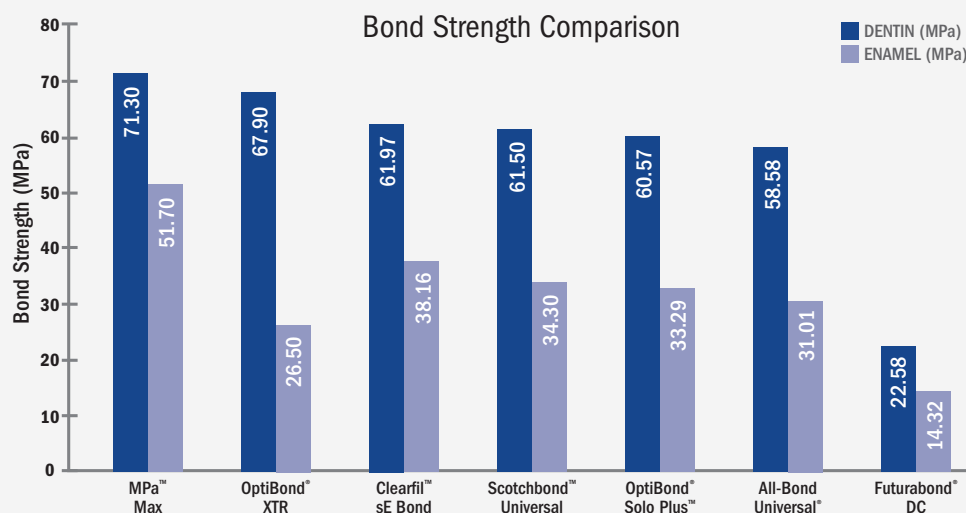
Combined, G5 and MPa Max, eliminate the chance of post-operative sensitivity. Post-operative sensitivity is consistently prevented in two ways with MPa Max:

- MPa Max adhesive consistently coats and seals dentin tubules which prevents intratubular fluid flow—the cause of post-operative pain.
- G5, placed after etching and before MPa Max adhesive, works by coagulating the intratubular fluid, helping to seal the dentin and prevent stimulation of the odontoblast processes.

Maximum Bond Strength & Longevity

In a recent independent research study, MPa Max produced the highest bond strength to dentin, enamel, zirconia, and lithium disilicate. So regardless of the bonding situation you face, MPa Max will give you confidence for consistency and longevity.

Recent research proves that most dentin bonding agents lose significant bond strength within the first 6 months, and by up to 50% (Pashley research*). When acid is used to etch dentin, the mineral content of the dentin is dissolved leaving organic collagen behind as well as exposed MMP (Metalloproteinases) enzymes. After the dentin adhesive is placed and restoration completed, these MMPs slowly dissolve the collagen at the adhesive interface, resulting in significant degradation of the adhesive bond. Virtually all self- and total-etch adhesives are susceptible to this bond degradation. However, further research reveals that MMP activation can be inhibited with Chlorhexidine or CHX. MPa Max is one of the few adhesives that contains 0.2% CHX to help prevent adhesive bond degradation caused by MMPs. MPa Max will provide you with confidence that your adhesive restorations will last for many years.



Internal testing. All tests were performed using each manufacturer's recommended technique.

*D.H. Pashley, et al. J Dent Res. 2007 January; 86 (1): 90-94 Chlorhexidine Preserves Dentin Bond in Vitro.

► Order online at BrasselerUSA.com or call **800.841.4522**.



Total-Etch Adhesive System featuring MPa Max Adhesive

► Product Offering



Max Etch Syringe (5mL)

- 35% concentration of phosphoric acid, which represents the gold standard in achieving a consistent, micro-mechanically retentive enamel and dentin surface for virtually all bonding procedures
- Flowable with rich, blue color, allowing for precise placement
- Viscous enough to prevent migration
- Self-limiting in its depth of etch (average depth of 1.9 μ with 20 second etch)
- Rinses quickly, leaving behind a clean, etched surface with no residual pigment or filler to affect the adhesive integrity

Order No.

345503-B



G5 All-Purpose Desensitizer

- Aqueous, 5% glutaraldehyde-based desensitizer with 35% HEMA
- Glutaraldehyde with HEMA shows profound in-vivo antibacterial effect that seems to prevent bacterial growth in tooth/restoration interfaces and can produce gap-free margins
- Helps eliminates post-operative sensitivity in posterior composite restorations as well as under temporary crowns and bridges
- Works by coagulating plasma proteins within dentinal tubule fluid, which helps eliminate movement of the fluid—the root cause of dentinal sensitivity
- Used after Max Etch and before MPa Max adhesive

Size	Order No.
5mL	226105-B
10mL	226110-B



MPa™ Max Adhesive (5mL)

- Designed with slightly thicker viscosity, allowing you to easily coat each adhesive wall while ensuring the dentin and enamel are properly sealed
- Consistently coats and seals dentin tubules which prevents intratubular fluid flow—the cause of post-operative pain
- Provides maximum bond strength and maximum prevention of post-operative sensitivity
- Formulation includes 0.2% chlorhexidine to improve bond longevity; inhibiting MMPs

Order No.

266506-B

MPa Max Starter Kit

- 1 Max Etch Syringe (5mL)
- 1 G5 All-Purpose Desensitizer (5mL)
- 1 MPa Max Adhesive (5mL)
- 50 Applicator Brushes
- 15 Needle Tips (25 Gauge)
- 12 Mixing Wells

Order No.

266901-B

► Order online at BrasselerUSA.com or call **800.841.4522**.



BRASSELER
USA®

powered by
Clinician's Choice