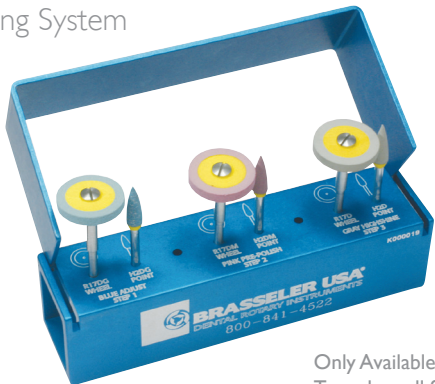


solutions™

Dialite® Extra-Oral Porcelain Polishing System



Order Number:
K000019

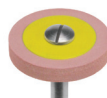
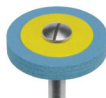


Figure Number	R17DG	H2DG	R17DM	H2DM
Head Size ($\frac{1}{10}$ mm)	170	040	170	040
Head Length (mm)	2.5	13.0	2.5	13.0

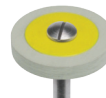


Figure Number	R17D	H2D
Head Size ($\frac{1}{10}$ mm)	170	040
Head Length (mm)	2.5	13.0

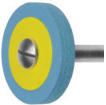

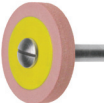
Only Available Direct from your Brasseler Representative
To order call 800.841.4522 or fax 888.610.1937
In Canada call 800.363.3838 or fax 866.330.4454
Visit our website at BrasselerUSA.com


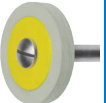

By Your Side In Dentistry



B-3739B-REVI-5022165L0-01.13-RRD

solutions™ K000019 Dialite® Extra-Oral Porcelain Polishing System

	Order #	Head Size	Grit	Usage
	R17DG-HP	170	C	Polisher - Contact Surfaces
	H2DG-HP	040	C	Polisher - Occlusal Surfaces
	R17DM-HP	170	M	Polisher - Contact Surfaces

	Order #	Head Size	Grit	Usage
	H2DM-HP	040	M	Polisher - Occlusal Surfaces
	R17D-HP	170	F	Polisher - Contact Surfaces
	H2D-HP	040	F	Polisher - Occlusal Surfaces

TIPS & TECHNIQUES: Polishers produce best results when using all three steps in order (coarse, medium and fine); Coarse blue Dialites for adjusting and polishing; medium pink for pre-polishing and fine gray for final polishing

Complimentary items: Dialite HP Polishers, Dialite Extra-Oral Diamond Paste (5015241U0), Diamond Discs (911H, 911HH, 911HV)

Power Suggestion: Brasseler Forza L50K Laboratory Motor with light pressure

Sterilization: Autoclave only

Recommended Speeds: 8,000-10,000 rpms

By Your Side In Dentistry

