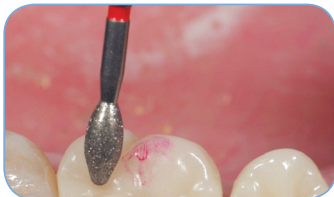


LITHIUM DISILICATE

FINISHING & POLISHING OF MODERN DENTAL CERAMICS



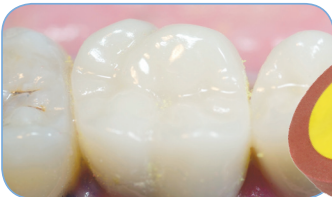
Adjustment of occlusion using football-shaped red-band Dialite finishing diamond, (8369DF)
(Recommended Speed: 100K rpm)



Dialite LD red medium polishing cup (W17MLD) for pre-polishing.
(Recommended Speed: 5,000 - 7,000 rpms)



Dialite LD yellow fine polishing cup (W17FLD) for high shine.
(Recommended Speed: 5K rpm)



Photos by John Sorensen

Lithium Disilicate crown polished with Dialite LD.

Dialite LD



FINISHING & POLISHING SYSTEMS FOR LITHIUM DISILICATE



K0263

Dialite® LD Intra-Oral Adjustment
Finishing & Polishing System for Lithium Disilicate
Recommended Speeds: 5,000 - 7,000 rpms



K0240

Dialite® LD Extra-Oral
Polishing System for Lithium Disilicate
Recommended Speeds: 7,000 - 10,000 rpms



To order call 800.841.4522 or fax 888.610.1937.
In Canada call 800.363.3838 or fax 866.330.4454.
Visit our website at BrasselerUSA.com

