

# Restorative Endodontics™



## *EndoSequence.*

*Precision Endodontic System™*

SO SOPHISTICATED ITS SIMPLE.™

By Your Side  
in Dentistry



**BRASSLER USA®**  
DENTAL INSTRUMENTATION



To order call 800.841.4522 or fax 888.610.1937.  
In Canada call 800.363.3838 or fax 866.330.4454.  
Visit our website at [BrasselerUSA.com](http://BrasselerUSA.com)



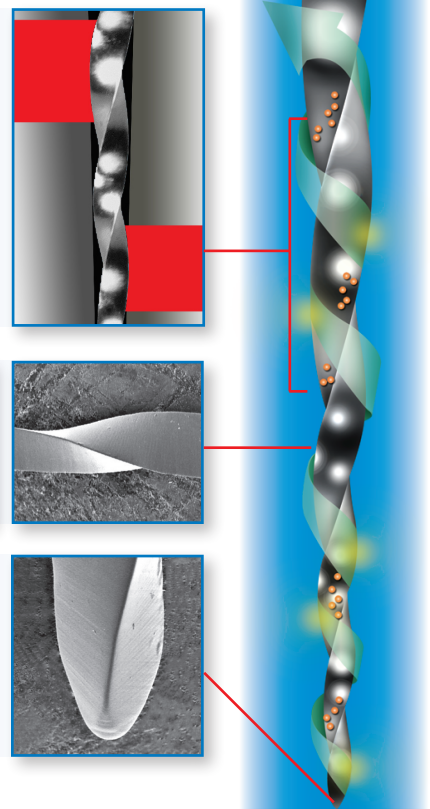
## Scientifically Tested. Clinically Proven.

When selecting an endodontic shaping instrument several key performance factors must be considered. Brasseler believes that EndoSequence is the most popular file in North America\* because it exhibits the best combination of the following desirable characteristics:

### DEBRIS REMOVAL / CUTTING EFFICIENCY

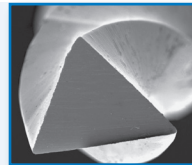
#### Patented Alternating Contact Point™ design

- File remains centered in the canal as the cutting edges engage with the dental wall at opposing intervals.
- File is never fully engaged with all sides of the canal wall so debris is carried coronally in a wave-like fashion (compare to reciprocating systems which push debris apically).\*\*



#### Triangular cross section, sharp cutting edges and a large chip space.

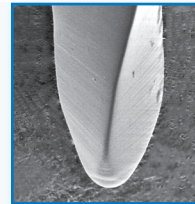
- Allows for efficient debris removal.



### SAFETY

#### Patented Precision Safety Tip

- Non-cutting at tip but fully active at D1.
- Reduces the chances of perforating or ledging.

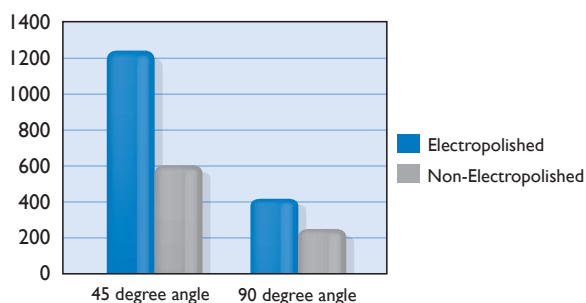


### RESISTANCE TO CYCLIC & TORSIONAL FATIGUE

#### Proprietary Electropolished Finish:

- Many surface or heat annealing treatments improve a file's resistance to cyclic fatigue but drastically reduce the file's resistance to torsional stress. What good is a file that performs well in a cyclic fatigue test if it is dull and unwinds without warning (a major "length control" concern)?
- Brasseler files are the only files in North America that are electropolished. This proprietary surface treatment has been proven time after time to improve the EndoSequence file's resistance to cyclic and torsional fatigue.\*\*\*

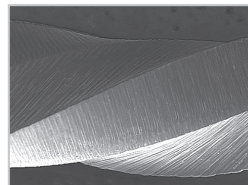
### Rotation-to-Fracture for Electropolished and Nonelectropolished Instruments †



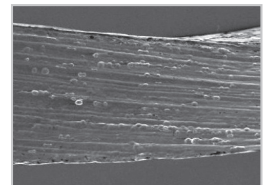
Endosequence® Electropolished



Vortex® Non-Electropolished



WaveOne® Non-Electropolished



Twisted File® Non-Electropolished

\* Based on Brasseler's internal sales and available data from all major US distributors.

\*\* **Reciprocating File Debris Extrusion:** Apically Extruded Debris with Reciprocating Single-File and Full-Sequence Rotary Instrumentation Systems. JOE, Vol 8, Issue 6, June 2012, 850-852.

\*\*\* **Electropolishing:**

† Anderson M, Price J, Parashos P. Fracture Resistance of Electropolished Rotary Nickel-Titanium Endodontic Instruments. Journal of Endodontics, 2007; 33, 1212-1216.

Bonaccorso A, Trip TR et al. Pitting Corrosion Resistance of Nickel-Titanium Rotary Instruments with Different Surface Treatments in Seventeen Percent Ethylenediaminetetraacetic Acid and Sodium Chloride Solutions. JOE 2008; 34: 208-211.

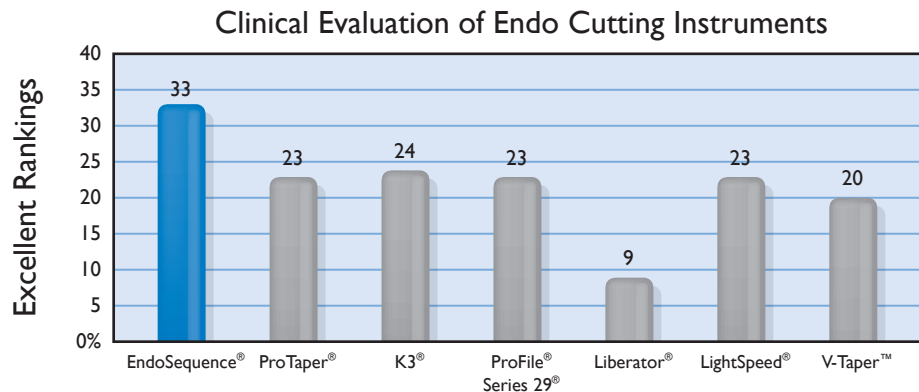
Kobayashi C, Suda H. Durability of Nickel-Titanium Files in Curved Canals. JOE 2004; 30: Abstract 284.

## Scientifically Tested. Clinically Proven.

A recent study review in the Journal of Endodontics concluded that all known benchtop test protocols fall short of evaluating all of the key performance characteristics for endo shaping instruments\*. No test protocol predictably evaluates all of the following characteristics:

- Cutting efficiency (removal of debris away from the apex)
- Safety (non-perforating, non-ledgeing and non-transporting)
- Resistance to cyclic fatigue (file separation)
- Resistance to torsional stress (file separation and deformation/unwinding/lengthening)

The following clinical evaluation provides the strongest evidence that the EndoSequence file provides the best combination of all key performance characteristics:



Collecting input from 472 practicing dentists, 90% of those who evaluated the EndoSequence file ranked its overall performance as “excellent”, “very good” or “good”. Of the 8 brands evaluated, EndoSequence received 38% more “excellent” votes than the next closest competitor!\*\*

“As a specialist I try new files as they come out so I stay abreast of the changing technology. To date I have not evaluated a file that can compete with EndoSequence in terms of exhibiting the best combination of cutting efficiency, flexibility and safety.”

– Dr. Richard Herman, DDS  
Endodontist, Diplomat of the American Board of Endodontics

“I have used EndoSequence for years and I can say with confidence that they cut predictably and efficiently. In my hands there is no other option.”

– Dr. Lynne Brock DDS, CAGS, FACD  
Endodontist

“I would recommend EndoSequence to anyone looking to improve the quality and efficiency of their endodontic therapy.”

– Dr. Alex Fleurry, DDS, MS  
Endodontist

“The EndoSequence system has drastically improved the efficiency of my practice. The files cut smoothly and the obturation and post system match perfectly.”

– Dr. Wayne Pulver, DDS  
Dip Endo

\* A Review of Cyclic Fatigue Testing of Nickel-Titanium Rotary Instruments. Plotino G et al, Journal of Endodontics. Vol 35, Number 11, November 2009

\*\* Complete source of information available upon request.

# EndoSequence® is the Only Endodontic System to be Fully Synchronized from Instrumentation through Obturation and Post Placement!

## EndoSequence Philosophy:

- The restoration of an endodontically treated tooth begins at the apex.
- The cleaning and shaping instruments should preserve, to the greatest extent possible, the structural integrity of the tooth.
- The obturation materials should act as a conduit, not an inhibitor, to a successful long term restoration.
- When a post is necessary, it should not put undue stress on the root. It should have a similar modulus of elasticity to that of dentin and it should match the shape created by the last instrument used to shape the canal.
- The system should be as efficient as possible but the long term prognosis of the tooth trumps simplicity.



## The Patented EndoSequence® File Design

TAKE THE ENDOSEQUENCE CHALLENGE: COMPARE THE ENDOSEQUENCE FILE TO YOUR CURRENT FILE, AND IF YOU DON'T PREFER ENDOSEQUENCE, WE WILL GLADLY PROVIDE YOU WITH A FULL REFUND.

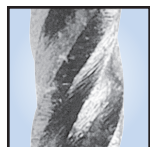
Countless competitors have tried circumventing our patents in the hope of rivaling the cutting efficiency and safety of the EndoSequence file. Their efforts, while flattering, always fall short. EndoSequence is the only file in the world that contains all of the following features:

### Available with Calibration Markings

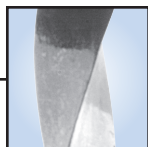
- Visible on radiographs

### Electropolished Surface

- Eliminates surface imperfections that weaken other files
- Increases file sharpness



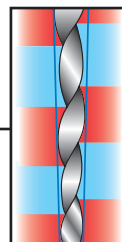
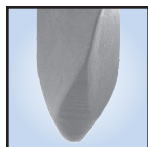
Typical Competitive File



EndoSequence File

### Precision Tip

- Non-active at the tip, fully active precisely at 1 mm



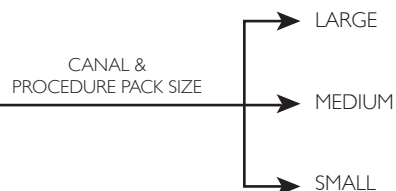
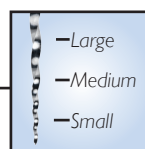
### Patented ACP

#### (Alternating Contact Point™) Design

- Non-landed, reduced-drag design
- Centers file within canal without radial lands
- Prevents self-threading "screw in" to canal
- Enhances debris removal
- Maximizes cutting efficiency

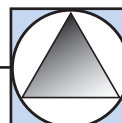
### Expeditor™ File & Procedure Packs

- Expeditor™ gauges canal size based on depth of initial engagement.
- Procedure packs minimize inventory costs and expedite procedure.

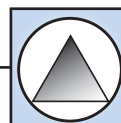


### No Radial Lands

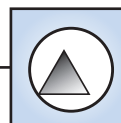
- Flexibility is maximized
- Torque is minimized
- Reduced cross section thickness
- Sharp cutting edge



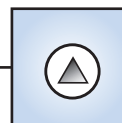
3 point engagement



2 point engagement



1 point engagement



No engagement



# EndoSequence<sup>®</sup>

## BC Obturation System<sup>™</sup>

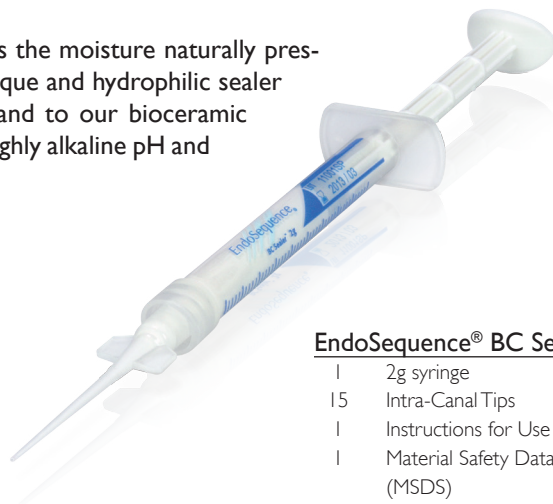


*The "State-of-the-Art" in Endodontic Obturation Has Changed!*

Unlike conventional base/catalyst sealers, BC Sealer is premixed and utilizes the moisture naturally present in the dentinal tubules to initiate its setting reaction. This highly radiopaque and hydrophilic sealer forms hydroxyapatite upon setting and chemically bonds to both dentin and to our bioceramic points (EndoSequence<sup>®</sup> BC Points<sup>™</sup>). BC Sealer is anti-bacterial due to its highly alkaline pH and unlike traditional sealers, BC Sealer exhibits absolutely zero shrinkage!

“ Finally a complete system that incorporates the restorative goals and long term prognosis of the entire tooth - not to mention the ease of use for the clinician! ”

— Dr. David Garber, DMD



### EndoSequence<sup>®</sup> BC Sealer:

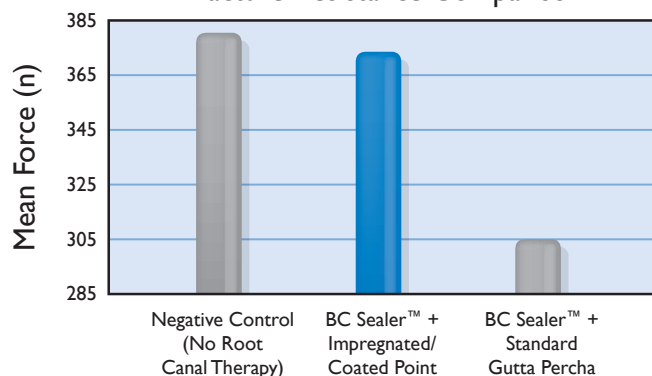
- 1 2g syringe
- 15 Intra-Canal Tips
- 1 Instructions for Use (IFU)
- 1 Material Safety Data Sheet (MSDS)

Order No. 5017560U0

## Restorative Endodontics<sup>™</sup>

A recent study concluded that EndoSequence BC Sealer, when used in conjunction with our bioceramic points, actually strengthens the root to a fracture resistance comparable to that of teeth that have not undergone root canal therapy!†

Fracture Resistance Comparison †



### BC Obturation Kit .04 Taper: (Also available in .06)

- 1 BC Sealer
- 15 Intra-Canal Tips
- 1 Assorted BC Points Wheel (.04 Taper)
- 1 Instructions for Use (IFU)
- 1 Material Safety Data Sheet (MSDS)

Order No. 5019504U0

### BC Points Replacement Packs

Available in size: 15-80 (.04), 15-50 (.06) and BC Pellets

### Video Tutorial

Scan this QR code for a step-by-step tutorial for the Endosequence shaping and obturation technique.



Note: BC Sealer and BC Points are suitable for warm and cold obturation techniques.

†Ghoneim AG, Lutfy RA, Sabet NE, Fayyad DM. Resistance to fracture of roots obturated with novel canal-filling systems. JOE. 2011; 37 (11): 1590-2





# EndoSequence®

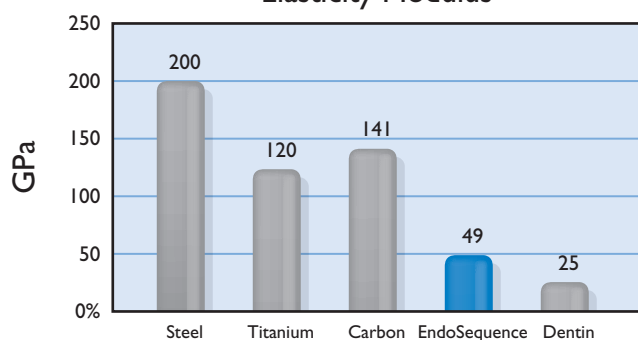
## Fiber Post System

Everything You Love About Cast Posts But at a Fraction of the Cost and With Zero Hassle!

### FEATURES

- Drill-free system: Post matches the shape created by the EndoSequence Files. Similar to a cast post!
- High Zirconia content (68%) gives increased strength
- Low modulus of elasticity (49GPa) promotes natural movement of surrounding tooth structure
- Factory silanation ensures proper chemical and micro-mechanical bonding for dual and light cure resins
- High radiopacity for crisp post-op radiographs
- White composite fiber composition ideal for highly esthetic restorations
- Received an excellent rating on a survey conducted by a nationally recognized third party product evaluation company.\*

### Elasticity Modulus



### EndoSequence Posts (5/Pack)

| Tip ID | Tip Size | .04 Taper |
|--------|----------|-----------|
| Yellow | .50      | 5013508U0 |
| Red    | .70      | 5013509U0 |
| Blue   | .90      | 5013510U0 |
| Green  | 1.1      | 5013511U0 |

### TECHNIQUE

- Simply burnout the necessary amount of gutta percha or pre-cut the cone to create the desired apical plug.

### Video Tutorial

Scan this QR code for a step-by-step tutorial for the EndoSequence post placement technique.



### EndoSequence Post General Selection Guidelines

| EndoSequence File/<br>Post Drill (.04 Taper) | EndoSequence Post<br>to be Used (.04 Taper) |
|--|---|
| Tip Size 30                                  | Tip Size .50                                |
| Tip Size 50                                  | Tip Size .70                                |
| Tip Size 70 (.04 Taper Only)                 | Tip Size .90                                |
| Tip Size 80 (.04 Taper Only)                 | Tip Size 1.1                                |

### K0165 EndoSequence® Post Starter Kit (.04 Taper):

|                       |   |
|-----------------------|---|
| 5 ea. (sizes .50-1.1) | EndoSequence Posts (.04 Taper)            |
| 2                     | Double Ended Burnout Pluggers (.04 Taper) |
| 1                     | Universal Finishing Diamond**             |
| 1                     | Hand Driver                               |
| 1                     | Instructions for Use (IFU)                |

Order No. 5015623U0



\* Survey results available upon request.

\*\* Diamond is used manually in a watch-winding motion to remove any gutta percha tags and/or sealer from canal wall prior to applying bonding agent and EndoSequence® Core Build-Up Material™

# EndoSequence<sup>2</sup>

## Features:

- Smallest Head in the Industry
- Cordless
- 5 Programmable Settings
- Auto Reverse
- Torque Control
- Speed Range: 200-1,000 rpm
- AAA Rechargeable Batteries
- 1 Year Warranty

\* Set Includes Motor, Head, Charging Base



Order No. 5021327U0

## The Complete EndoSequence<sup>®</sup> System



### EndoSequence<sup>®</sup> Starter Kit: (Shown above. See contents below)

Order No. 5019354U0

|   |   |   |  |   |                                    |
|---|---|---|--|---|------------------------------------|
| 5 | Expeditor .04 Taper; 21/16mm (4/pk)           | 5 | Large .04 Taper; 31mm Asst (4/pk)                | I | BC Points Asst Wheel .04, 15-60mm  |
| 5 | Small/Extra-Small .04 Taper; 21mm Asst (4/pk) | 5 | Extra-Large .04 Taper; 21mm Asst (4/pk)          | I | EndoSequence Canal Clean (100mL)   |
| 5 | Small/Extra-Small .04 Taper; 25mm Asst (4/pk) | 5 | Extra-Large .04 Taper; 25mm Asst (4/pk)          | I | EndoSequence Lubricant             |
| 5 | Small/Extra-Small .04 Taper; 31mm Asst (4/pk) | 5 | KontrolFlex Stiff K-File .08 Taper; 25mm (6/pk)  | I | EndoSequence BC Sealer             |
| 5 | Medium .04 Taper; 21mm Asst (4/pk)            | 5 | KontrolFlex Stiff K-File .10 Taper; 25mm (6/pk)  | I | EndoSequence Chairside Guide       |
| 5 | Medium .04 Taper; 25mm Asst (4/pk)            | 5 | KontrolFlex Stiff K-File .15 Taper; 25mm (6/pk)  | I | Real World Endo / EndoSequence DVD |
| 5 | Medium .04 Taper; 31mm Asst (4/pk)            | 5 | Gates Glidden Asst, 50-150mm (6/pk)              | I | EndoSequence Instructional Info    |
| 5 | Large .04 Taper; 21mm Asst (4/pk)             | I | K000032 EndoSequence Access Kit                  |   |                                    |
| 5 | Large .04 Taper; 25mm Asst (4/pk)             | I | K01652 EndoSequence Post Starter Kit (.04 Taper) |   | * Handpiece sold separately        |

### EndoSequence<sup>®</sup> Introductory Kit: (Not shown above. See contents below)

Order No. 5023032U0

|   |   |   |                                       |
|---|---|---|---------------------------------------|
| 2 | Expeditor .04 Taper; 21/16mm (4/pk)           | I | EndoSequence Fiber Post Kit .04 Taper |
| 2 | Small/Extra-Small .04 Taper; 25mm Asst (4/pk) | I | EndoSequence BC Sealer                |
| 3 | Medium .04 Taper; 25mm Asst (4/pk)            | I | EndoSequence Chairside Guide          |
| 2 | Large .04 Taper; 25mm Asst (4/pk)             | I | Real World Endo / EndoSequence DVD    |
| 1 | BC Points Asst Wheel .04, 15-60mm             | I | EndoSequence Instructional Info       |

# EndoSequence®

## Core Build-Up/Post Cement

### Strong and Versatile

- Fiber reinforced, high filler content formula provides optimal strength.
- Dual purpose: Balanced viscosity allows it to be used as a core build-up and post cement.
- Dual cure
- Convenient syringe or cartridge delivery.
- Received an excellent rating on a survey conducted by a nationally recognized third party product evaluation company.†



| Packaging Unit                           | Order No. |
|--|-----------|
| 3 A2 syringes, 2 white syringes, 25 tips | 5013885U0 |

# EndoSequence®

## Lubricant



### Active Ingredients:

- EDTA: 15%
- Urea Peroxide: 10%

| Packaging Unit    | Order No. |
|-------------------|-----------|
| Three 3g Syringes | 5015119U0 |

# EndoSequence®

## Canal Clean™

### Active Ingredients:

- EDTA: 3%
- Cocoamphodiacetate (surfactant)
- Benzalkoniumchloride (anti-bacterial)

| Packaging Unit | Order No. |
|----------------|-----------|
| 100 mL         | 5013409U0 |
| 250 mL         | 5013410U0 |



# KontrolFlex™

## K-Files

- Calibrated with stops for length measurement
- Manufactured of high quality stainless steel
- Optimal combination of strength and flexibility
- Only K-Files available in 19 mm length

| Size  | Stiffness | Length          |
|-------|-----------|-----------------|
| 15-80 | Standard  | 19*, 21, 25, 31 |
| 06-15 | Stiff     | 21, 25          |

\* 19 mm is available in 06-15

### STANDARD K-FILES (6/PACK)



### STIFF K-FILES (6/PACK)

### Compare to C-Files™



†Survey results available upon request.

ProFile®, ProTaper®, Series 29®, K3®, LightSpeed®, Liberator®, V-Taper™, WaveOne®, Vortex®, Twisted File® and C-Files are not registered trademarks of Brasseler USA. EndoSequence®, BC Sealer™, BC Points™ and BC Obturation System™ are trademarks of Brasseler USA.



To order call 800.841.4522 or fax 888.610.1937.  
In Canada call 800.363.3838 or fax 866.330.4454.  
Visit our website at [BrasselerUSA.com](http://BrasselerUSA.com)

By Your Side  
in Dentistry

