

PROVISIONALIZATION

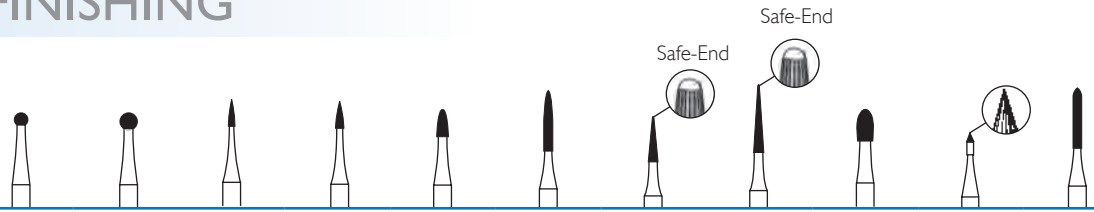
BY BRASSELER USA

By Your Side
in Dentistry



BRASSELER USA
DENTAL INSTRUMENTATION

CARBIDES-FINISHING

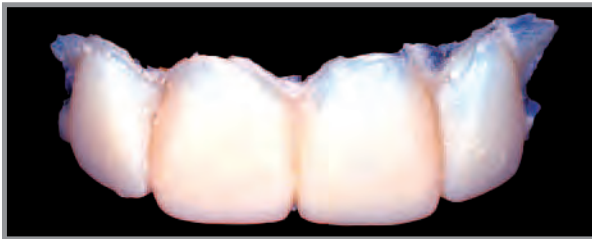


Order #	7006	7008	7901	7903	H274	H48L	ET6	ET9	OS1	H1621	H283
Head Size (1/16 mm)	018	023	009	012	016	012	014	014	023	008	012
Cutting Length (mm)	—	—	3.6	3.6	3.5	8.0	6.0	9.0	4.2	1.2	8.0

31-FG - Friction Grip (19mm)

● Cross-Cut (15 Blade)			7901EX	7903EX		H48LEX	ET6EX	ET9EX	7408EX		
● Fine (8-12 Blade)	7006	7008	7901	7903	H274	H48L	ET6	ET9	OS1	H1621	H283
● Extra-Fine (16 Blade)						H48LF	ET6F	ET9F	OS1F		
○ Ultra-Fine (30 Blade)	H41UF		H246UF		H274UF	H48LUF	ET6UF	ET9UF	OS1UF		

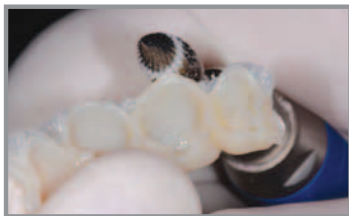
5/Pack



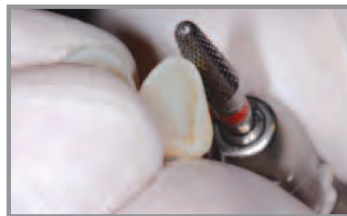
The initial provisional restoration prior to trimming. The provisional was made with a direct technique using a clear matrix taken from the diagnostic wax-up.

ELIMINATE CUTTERS AND POLISHERS FROM LOADING UP!

Soak temporary in alcohol for 60 seconds to remove the sticky air inhibited layer.



H78E.11.060



H79EF.11.040



RWGPP

The buccal and palatal margins were trimmed first using any of the three rotary instruments, provided in the K0181 Spear Provisional System.



The provisional restoration after the buccal and palatal margins were trimmed.

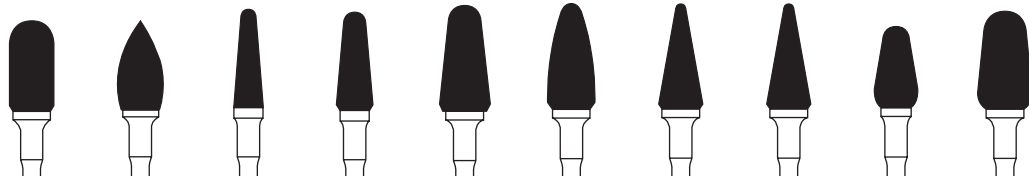
Photos by Gregory Kinzer, DDS, MSD
Spear Education Center for Dentistry
<http://www.speareducation.com/>

CARBIDES-CUTTERS

MINIMIZE POLISHING TIME!

Extra-Fine E-Cutters® (EF) leave an ultra smooth surface, minimizing polishing time.

SHAPING AND CONTOURING



Order #	H72	H78	H79	H79	H79	H25 I	H257	H257R	H35 I	H35 I
Head Size (1/10 mm)	060	060	040	050	070	060	060	060	060	070
Cutting Length (mm)	12.0	12.0	13.0	13.0	14.0	14.0	14.0	14.0	11.0	14.0

11 - HP - Straight Handpiece (44.5 mm)

● Coarse (SGE)

○ Regular (E)

● Fine (EF)

1/pack

				SGE	SGE					
	E	E	E	E		E		RE	E	E
			EF			EF	EF		EF	

OCCUSAL ANATOMY



Order #	H71	H71	H73	H73	H78	H77	H77	H137	H138	H138	H225
Head Size (1/10 mm)	014	023	014	023	023	023	029	016	014	023	023
Cutting Length (mm)	—	—	3.1	4.2	6.0	5.0	5.0	4.0	4.0	8.0	5.0

11 - HP - Straight Handpiece (44.5 mm)

○ Regular (E)

● Fine (EF)

1/pack

	E	E	E	E	E	E	E	E	E	E	
				EF		EF	EF			EF	EF

LINGUAL



Order #	H71	H71	H73	H73	H35 I
Head Size (1/10 mm)	050	070	040	060	040
Cutting Length (mm)	—	—	6.0	10.0	8.0

11 - HP - Straight Handpiece (44.5 mm)

○ Regular (E)

● Fine (EF)

1/pack

	E	E	E	E	E
--	---	---	---	---	---

INTERPROXIMAL

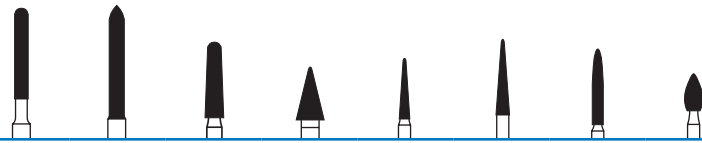


Order #	H136	H261	H257	H293	H295
Head Size (1/10 mm)	016	023	023	023	023
Cutting Length (mm)	8.0	13.0	13.0	15.0	15.0


		E		E	E
--	--	---	--	---	---

	EF	EF	EF		EF
--	----	----	----	--	----

DIAMONDS-STRAIGHT HANDPIECE

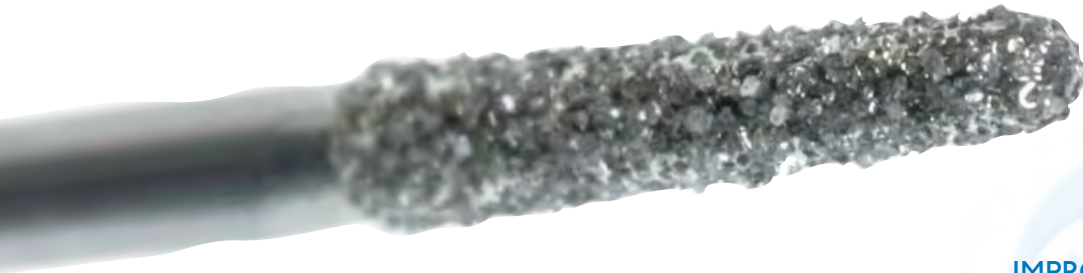


Order #	842R	892	856	852	858	859	863	368
Head Size (1/10 mm)	018	020	025	037	014	018	016	023
Cutting Length (mm)	12.0	15.0	8.0	7.0	8.0	10.0	10.0	5.0

II - HP - Straight Handpiece (44.5 mm) 

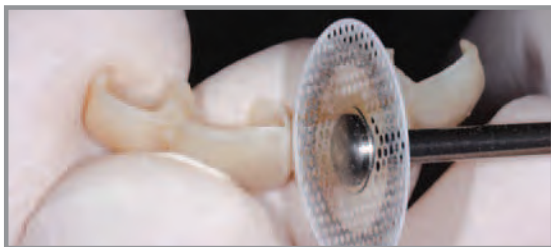
● Coarse (125 micron)							6863	
● Medium (100 micron)	842R	892	856	852	858	859	863	368
● Fine (30 micron)						8859		

5/Pack

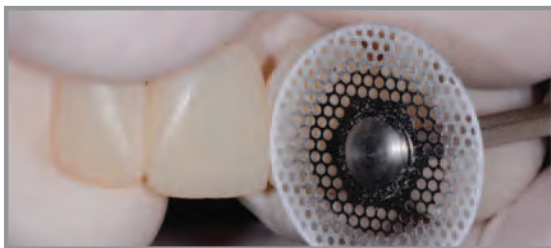


IMPROVED RESULTS!

Laboratory Diamonds offer efficient cutting for precise and accurate material reduction.



The gingival embrasures were opened first using a thin, flexible disc that was run at a slower speed. 934.180



The same discs could be used to carve the facial and incisal embrasures to create the line angles.

DIAMONDS-DISCS

VISIONFLEX™

Open Meshed Disc
Double-Sided



Order #	934	934	934
Head Size (1/10 mm)	140	180	220
Coverage (mm)	2.0	3.0	3.0

21 - RA - Right-Angle Latch (22 mm)

● Medium (L=.14)	934	934	-
------------------	-----	-----	---

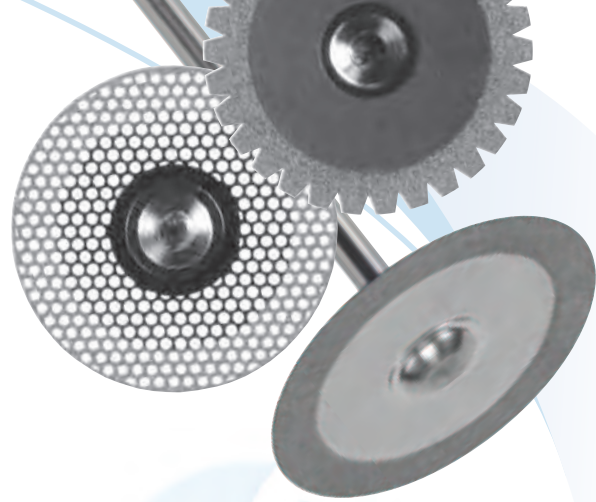
11 - HP - Straight Handpiece (44.5 mm)

● Coarse (L=.20)	-	-	6934
------------------	---	---	------

● Medium (L=.14)	934	934	934
------------------	-----	-----	-----

Ultra-fine contouring

L= Thickness of Disc



MARGIN REFINEMENT!

Diamond discs are ideally suited for light shaping and contouring the interproximal, marginal and facial surfaces on all types of acrylic and ceramics.

HYPERFLEX™

Double-Sided



Order #	911H	911H	911H	911HF
Head Size (1/10 mm)	140	180	220	220
Coverage (mm)	3.0	3.0	3.0	3.0

11 - HP - Straight Handpiece (44.5 mm)

● Coarse (L=.20)	-	6911H	6911H	6911HF
------------------	---	-------	-------	--------

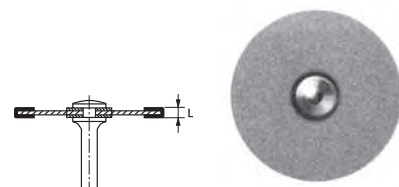
● Medium (L=.14)	911H	911H	911H	911HF
------------------	------	------	------	-------

Separating and contouring

L= Thickness of Disc

* Increased rigidity

Double-Sided



Order #	940
Head Size (1/10 mm)	220
Coverage (mm)	-

11 - HP - Straight Handpiece (44.5 mm)

● Medium (L=.14)	940
------------------	-----

Fine separating and contouring

L= Thickness of Disc

* Flexible

FLEXIBLE SERRATED

Double-Sided



Order #	365	Order #	946
Head Size (1/10 mm)	220	Head Size (1/10 mm)	180
Coverage (mm)	3.0	Coverage (mm)	3.0

11 - HP - Straight Handpiece (44.5 mm)

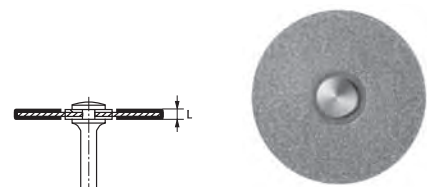
● Medium (L=.25)	365	● Medium (L=.20)	946
------------------	-----	------------------	-----

Separating and contouring acrylic

L= Thickness of Disc

FLEXIBLE COATED

Double-Sided



Order #	918B
Head Size (1/10 mm)	220
Coverage (mm)	-

11 - HP - Straight Handpiece (44.5 mm)

● Coarse (L=.45)	6918B
------------------	-------

● Medium (L=.31)	918B
------------------	------

Separating and rough contouring

* Rigid

POLISHING-PROVISIONAL

SILICONE PROVISIONAL POLISHERS

- Silicone polishers eliminate scratches from acrylic and composite based appliances and provisionals
- For best results follow with ET® ProviPro™ polishers for an ultra-smooth surface
- Recommended speed: 10,000 -15,000 rpms
- Sterilization: Autoclave
- Great for fine shaping and contouring

MINIMIZE POLISHING TIME!

Silicone polishers will remove striations created from carbide cutters, therefore enhancing and minimizing polishing time.



Order #	RWGPP	RWPPP	R22
Head Size (1/10 mm)	220	220	220
Cutting Length (mm)	3.0	3.0	3.0
Grit	Coarse	Fine	Coarse

Use Mandrel 305.11

10/Pack

ET® PROVIPRO™ POLISHERS

- Two-step aluminum oxide impregnated cotton buff system for polishing acrylic and composite based provisional material
- Recommended speed: 10,000 -15,000 rpms
- Single-Use



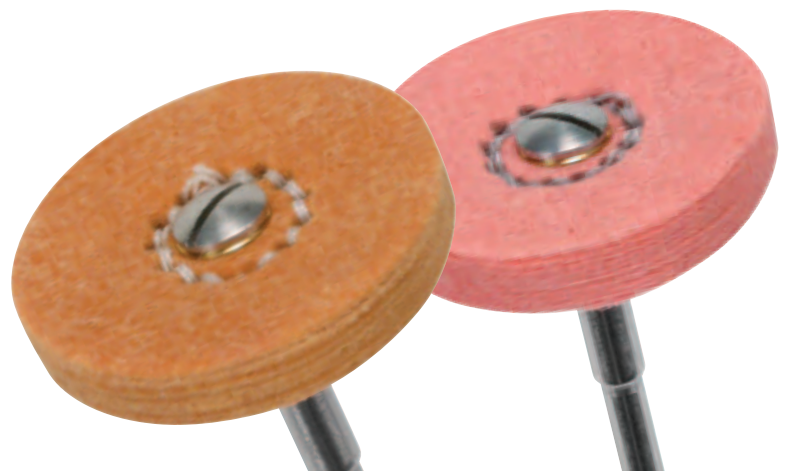
Order #	SWR22M	SWR22F
Head Size (1/10 mm)	220	220
Cutting Length (mm)	3.0	3.0
Grit	Medium	Fine

Use Mandrel 305.11

12/Pack

ELIMINATE MESSY PUMICE!

ET® ProviPro™ (Aluminum oxide impregnated buffs) will polish all acrylic appliances and composite based provisional materials eliminating the need for messy pumice!



POLISHING-ACRYLIC

ACRYLIPRO™ ACRYLIC POLISHERS

- Silicone polishing system for acrylic prosthetic and treatment appliances
- Recommended speed: coarse & medium (10,000 - 15,000 rpms); fine (5,000 - 7,000 rpms)
- Sterilization: Autoclave



Order #	0674	0664	0654	0679	0669	0659
Head Size (1/10 mm)	100	100	100	055	055	055
Cutting Length (mm)	24.0	24.0	24.0	15.5	15.5	15.5

11 - HP - Straight Handpiece (44.5 mm)



Grit Coarse Medium Fine Coarse Medium Fine

6/Pack

10/Pack



Order #	BR03	BR02	BR01
Head Size (1/10 mm)	220	220	220
Cutting Length (mm)	3.0	3.0	3.0

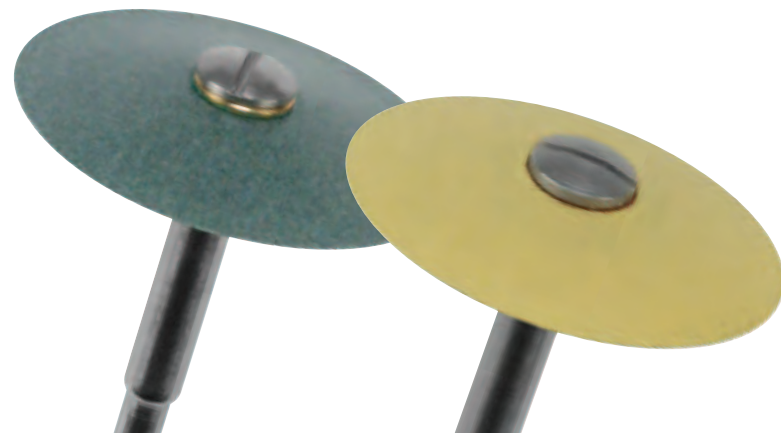
11 - HP - Straight Handpiece (44.5 mm)



Grit Coarse Medium Fine

Use Mandrel 305.11

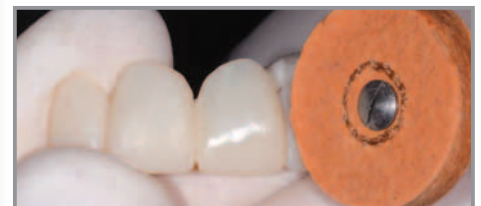
10/Pack



The provisional restoration after adjustment but before the final polish.



RWGPP



SWR22M

Using the ProviPro wheels allowed the restorations to achieve a high luster and shine. (Note the difference in the surface of the centrals, as one has been polished and one has not.)



The completed provisional restorations after finishing and polishing.

Photos by Gregory Kinzer, DDS, MSD
Spear Education Center for Dentistry
<http://www.speareducation.com/>

POLISHING-INTRA-ORAL PROVISIONAL

DIACOMP® COMPOSITE POLISHERS

- High efficiency, diamond impregnated, two-step polishing system designed for fine contouring and polishing of composites, compomer, and glass ionomers
- Wet polishing is recommended
- Recommended speed: 5,000 - 10,000 rpms
- Sterilization: Autoclave



Order #	DC1M	DC2M	DC3M	DC4M	DC1	DC2	DC3	DC4
Head Size (1/10 mm)	040	100	060	085	040	100	060	085
Cutting Length (mm)	10.0	2.5	7.5	7.6	10.0	2.5	7.5	7.6

21 - RA - Right-Angle Latch (22 mm)



Grit	Medium	Medium	Medium	Medium	Fine	Fine	Fine	Fine
------	--------	--------	--------	--------	------	------	------	------

5/Pack

COMOSIPRO™ BRUSHES

- Special fibers impregnated with silicone-carbide particles ideal for polishing posterior occlusal surfaces
- These one-step brushes easily reach confined or difficult areas and require no messy pastes
- They may also be used during prophylactic treatment to remove discoloration
- Recommended speed: 5,000 - 7,000 rpms
- Sterilization: Autoclave



Order #	D209001	D209002	D209003
Head Size (1/10 mm)	075	050	047
Cutting Length (mm)	5.0	6.0	6.0

21 - RA - Right-Angle Latch (22 mm)



Grit	Medium/Fine	Medium/Fine	Medium/Fine
------	-------------	-------------	-------------

20/Pack

QUICK INTRA-ORAL POLISHING!

Brushes are ideal for occlusal polishing of posterior provisionals as well as help maintain dental anatomy.

LABORATORY MANDRELS

- For use on unmounted wheels and knife-edge polishers



Order #	303	305	305
Head Size (1/10 mm)	050	050	080

11 - HP - Straight Handpiece (44.5 mm)



6/Pack

POLISHING-LUSTERPRO™ BRUSHES, BUFFS & FELTS

REMOVING TAGS!

Scotchbrite polishers will remove tags from acrylic created by rotary instruments!

- Brushes with polishing paste are ideal to final polish secondary anatomy or highly textured facial surfaces without removing detail
- When using diamond paste on carriers, apply in a circular motion with light pressure, maintaining a speed range between 5,000-10,000 rpms
- Brushes, felt wheels, chamois wheels, linens and buffs cannot be sterilized

SCOTCH-BRITE® BUFF



Head Size (1/10 mm)	100	250
11 - HP - Straight Handpiece (44.5 mm)		
12/Pack	25010HP	25125HP
	Medium	Medium
	Mini	

GOAT HAIR WITH CHAMOIS INSERT



Head Size (1/10 mm)	220	220
11 - HP - Straight Handpiece (44.5 mm)		
12/Pack	10050022HP	10250022HP
	Stiff	Soft

FELT CLOTH



Head Size (1/10 mm)	220
11 - HP - Straight Handpiece (44.5 mm)	
12/Pack	16222HP

WHITE MUSLIN CLOTH



Head Size (1/10 mm)	220
11 - HP - Straight Handpiece (44.5 mm)	
12/Pack	16422HP

FELT PASTE CARRIER FOR POLISHING PASTE



Head Size (1/10 mm)	200
Cutting Length (mm)	3.0
Unmounted	
10/Pack	FELT
Use Mandrel 305.11	

FLANNEL CLOTH



Head Size (1/10 mm)	220
11 - HP - Straight Handpiece (44.5 mm)	
12/Pack	16122HP

COTTON BUFF



Head Size (1/10 mm)	220
11 - HP - Straight Handpiece (44.5 mm)	
12/Pack	15122HP

LEATHER BUFF



Head Size (1/10 mm)	220
11 - HP - Straight Handpiece (44.5 mm)	
12/Pack	50022HP

ABBOT ROBINSON® BRISTLE BRUSHES

Description	#9 Soft	#9 Stiff	#11 Soft	#11 Stiff	#12 Soft	#12 Stiff
Length	9/16	9/16	11/16	11/16	3/4	3/4
US No.	0599	0601	0606	6081	0614	0616

11 - HP - Straight Handpiece (44.5 mm)



144/Pack **0599.411.144 0601.411.144 0606.411.144 6081.411.144 0614.411.144 0616.411.144**

Abbot-Robinson® is a registered trademark of Buffalo Dental Manufacturing Co., Inc.



PROCEDURE SYSTEMS

BRASSELER USA®: ACRYLIC TEMPORIZATION SYSTEM

This system consists of extra-fine cutters, serrated diamond disc, and knife-edge acrylic polishers for trimming, contouring and polishing acrylic restorations.



Developed by



117.11

Figure No.	BR03	BR02	BR01
Head Size (1/10 mm)	220	220	220
Cutting Length (mm)	3.0	3.0	3.0
Grit	Coarse	Medium	Fine
Quantity	2	2	2

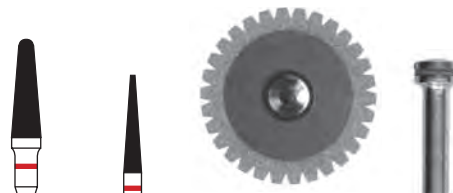


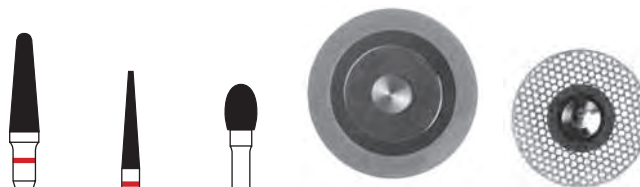
Figure No.	H79EF	H257EF	365	305
Head Size (1/10 mm)	040	023	220	050
Cutting Length (mm)	13.0	13.0	—	—
Grit	—	—	Medium	—
Shank Type	HP	HP	HP	HP
Quantity	1	1	1	3

DAWSON ACADEMY: PROVISIONAL SYSTEM

This system was designed for trimming, contouring and polishing temporary provisional restorations.



Developed by



K0203

Figure No.	H79EF	H257EF	H73E	6911HF	934
Head Size (1/10 mm)	040	023	040	220	180
Cutting Length (mm)	13.0	13.0	6.0	—	—
Grit	—	—	—	Coarse	Medium
Shank Type	HP	HP	HP	HP	HP
Quantity	1	1	1	1	1



Figure No.	10250022HP	16122HP	6081
Head Size (1/10 mm)	220	220	11/16"/#11 Stiff
Grit	Soft	Fine	Stiff
Shank Type	HP	HP	HP
Quantity	1	1	1

FEDERICK: TEMPORIZATION SYSTEM

This system was designed for trimming, contouring and finishing of temporary crown and bridge restorations.



Developed by
DR. DAVID FEDERICK

1004.11

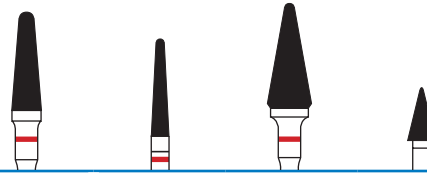


Figure No.	H79EF	H261EF	H257EF	852
Head Size ($1/10$ mm)	040	023	060	037
Cutting Length (mm)	13.0	13.0	14.0	7.0
Grit	—	—	—	Medium
Shank Type	HP	HP	HP	HP
Quantity	1	1	1	1

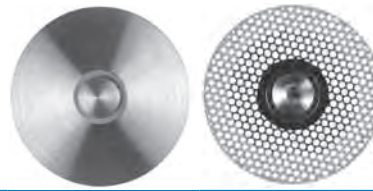


Figure No.	919	934
Head Size ($1/10$ mm)	220	220
Grit	Medium	Medium
Shank Type	HP	HP
Quantity	1	1

KOIS: PROVISIONAL SYSTEM

This system consists of E-CUTTER®s, flexible diamond discs and a polisher for trimming, contouring and polishing provisional restorations.



Developed by Dr. John Kois



K0073

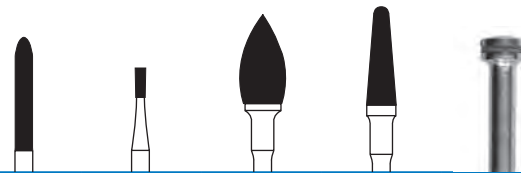


Figure No.	H295E	H137E	KH78	H79	305
Head Size ($1/10$ mm)	023	016	060	040	050
Cutting Length (mm)	15.0	4.0	12.0	13.0	—
Shank Type	HP	HP	HP	HP	HP
Quantity	1	1	1	1	1



Figure No.	911H	934	R22
Head Size ($1/10$ mm)	220	220	220
Cutting Length (mm)	—	—	3.0
Grit	Medium	Medium	Coarse
Shank Type	HP	HP	HP
Quantity	1	1	1

PROCEDURE SYSTEMS

OKUDA: ESTHETIC TRANSITIONAL TEMPORARY SYSTEM

This system was designed for trimming, contouring and finishing acrylic provisional restorations.



Developed by
DR. WYNN OKUDA

K0075

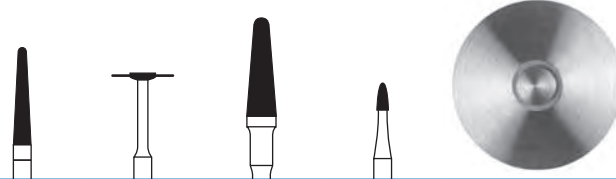


Figure No.	H261E	944	H79EC	H274	919
Head Size (1/10 mm)	023	080	040	016	220
Cutting Length (mm)	13.0	—	13.0	3.5	—
Grit	—	Medium	—	—	Medium
Shank Type	HP	HP	HP	HP	HP
Quantity	1	1	1	1	1



Figure No.	BR03	BR02	BR01	305
Head Size (1/10 mm)	220	220	220	050
Cutting Length (mm)	3.0	3.0	3.0	—
Grit	Coarse	Medium	Fine	—
Shank Type	—	—	—	HP
Quantity	1	1	1	3

PANKEY INSTITUTE: PROVISIONAL SYSTEM

This system was designed for trimming, contouring and polishing temporary restorations.



Developed by
THE PANKEY INSTITUTE

K0214



Figure No.	H293E	H351E	H139E	863	BR02	305
Head Size (1/10 mm)	023	060	023	016	220	050
Cutting Length (mm)	15.0	11.0	8.0	10.0	3.0	—
Grit	—	—	—	—	Medium	—
Shank Type	HP	HP	HP	HP	HP	HP
Quantity	1	1	1	1	1	1



Figure No.	0606	16222HP	940	934
Head Size (1/10 mm)	11/16" #11	220	220	220
Grit	Soft	Felt Cloth	Medium	Medium
Shank Type	HP	HP	HP	HP
Quantity	1	1	1	1

POWER

UNCOMPROMISING POWER...

The Forza L50K Lab Micromotor delivers uncompromising power throughout its advanced design. The cutting edge technology incorporated in the Forza L50K offers a massive 8.7 Ncm of torque and a speed range of 1,000-50,000 rpms. The lightweight, ergonomic handpiece weighs only 219 grams ensuring precise control and reduced hand fatigue.



FORZA L50K™

MicroMotor

Motor Speed Range: 1,000-50,000 rpm
Maximum Torque of 8.7 Ncm
Brushless
Weight: 219 g
1 Year Warranty

Order No. 5021337U0

SUGGESTED OPTIMAL SPEEDS:

Cutters: 10,000 - 15,000 rpms
Polishers:
Intra-Oral : 5,000 - 7,000 rpms
Extra-Oral: 8,000 - 10,000 rpms



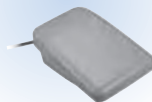
FORZA L50K™

Complete System

System includes Motor, Cord, Control Unit and AC Adapter
Digital Speed Display
Easy-to-Operate Display Panel
Foot Pedal or Hand Control Option
Auto Cruise Function
1 Year Warranty

Order No. 5021334U0

Also includes
Foot Control



THE ELECTRIC ADVANTAGE

Electric micromotors offer low speed with high torque enhancing cutting performance while providing optimal polishing! Increase life of instruments!

MATERIALS

COMPOSITE PROVISIONAL MATERIALS

Developed in the 1960's with an focus to overcome the negatives of methacrylates thermoset resin complex.

1) INTEGRITY

- Manufactured by DENTSPLY Caulk
- Integrity is a chemically-polymerized composite resin used to fabricate provisional crowns and bridges.
- Produces esthetic, easily polished, extremely well-fitting provisional restorations.
- Available in several shades
- Tendency for the material to abruptly convert from a liquid to solid (or semi-solid)
- Fast setting time

2) LUXATEMP

- Manufactured by DMG America
- Bis-acrylic temporary crown and bridge material
- Exceptional fit with high biocompatibility
- Optimized resistance to abrasion
- High flexural strength
- Direct application into the impression

3) PROTEMP

- Manufactured by 3M ESPE
- Composite based material for or single-unit temporaries
- Preformed, malleable temporary crown
- Enables dental professionals to quickly and easily adapt the crown and seat it in the patient's mouth
- Minimizes fabrication time (no mixing) while ensuring excellent fit and natural looking esthetics
- Natural looking esthetics

4) PROTEMP PLUS

- Manufactured by 3M ESPE
- Nanotechnology-based bis-acrylic material
- Indicated for single and multiple unit temporaries, crowns, bridges, inlays, onlays and veneers
- For long-term temporization
- Does not require polishing or glaze
- Temporary surface is smooth, so that simply cleaning the temporary with alcohol achieves the desired gloss.

5) VENUS

- Manufactured by Heraeus Kulzer
- Auto-mix, bis-acryl, self-curing provisional material
- Higher barcol hardness
- For both single and multi-unit temperature restorations
- Available in several shades
- Slower setting time
- Ideal for long span bridges due to low flexural modulus
- Material should be loaded from bottom of matrix upward to prevent voids

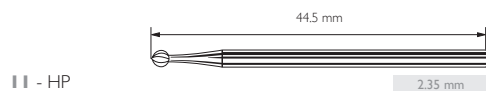
5) MIRROR IMAGE

- Manufactured by Cosmedent
- Fast working time
- Fast setting time
- Easily trimmed
- Highly esthetic
- Minimal oxygen inhibited layer
- Minimal occlusal adjustment

COMPOSITE PROVISIONAL COMPASS

Material	Procedure	Cutter	RPM	Diamond Disc	RPM	Polisher	RPM
Bisacryl/Composite	Bulk Material Reduction	E/SGE	10,000 - 15,000				
Luxatemp	Trimming Buccal/Palatal Margins	EF	10,000 - 15,000			RWSeries/AcrylicPro	8,000 - 10,000
Protemp	Adjusting Interproximal Gingival Embrasures			934, 911H, 911HF	10,000		
Protemp Plus	Adjusting Interproximal Facial/Incisal Embrasures			934, 911H, 911HF	10,000		
Integrity	Polishing Extra-Oral	EF	10,000 - 15,000			RWSeries/AcrylicPro/ET ProviPro	8,000 - 10,000
Venus	Polishing Interproximal Facial/Incisal Embrasures					ET ProviPro	8,000 - 10,000
Mirror Image	Polishing Intra-Oral					Diacomp/ComposiPro Brushes	5,000 - 7,000
Telio							

STRAIGHT HANDPIECE



FRICTION GRIP



RIGHT ANGLE LATCH



ACRYLIC PROVISIONAL MATERIALS

Temporary material divided into 3 subgroups: Poly (methyl methacrylate) (PMMA), Poly (ethyl methacrylate) (PEMA) and vinyl methacrylate. Used since 1930s (older technology than provisional composite)

1) ACRYLIC™ JET

- Manufactured by Lang Dental
- Self-curing acrylic resin methyl methacrylate
- Fast curing time
- Provides long term, color stable results
- Durable, easy to polish and trim
- Wide range of color options

2) SNAP™

- Manufactured by Parkell, Inc.
- Highly accurate, low-shrinkage
- For single and multi-unit provisionals
- Available in several shades
- Low heat release
- Color stability

ACRYLIC CUTTER COMPASS

Material	Procedure	Cutter	RPM	Diamond Disc	RPM	Polisher	RPM
Acrylic	Bulk Material Reduction	E/SGE	10,000 - 15,000				
	Trimming Buccal/Palatal Margins	EF	10,000 - 15,000			AcryliPro	8,000 - 10,000
	Adjusting Interproximal Gingival Embrasures			946,365 Serrated/Vision Flex 934	10,000		
	Adjusting Interproximal Facial/Incisal Embrasures			946,365 Serrated/Vision Flex 934	10,000		
	Trimming Facial Surface/Incisal Edge	EF	10,000 - 15,000			AcryliPro	8,000 - 10,000
	Polishing Extra-Oral					ProviPro/AcryliPro, Goathair/Chamois	8,000 - 10,000
	Polishing Intra-Oral					Diamond Paste	5,000 - 7,000
	Snap Jet						

CAD/CAM MILLED MATERIALS

1) TELIO CAD

Telio CAD blocks are used for the CAD/CAM manufacture of long-term temporaries (maximum wear period: 12 months).

Telio CAD restorations are either milled in the dental practice (e.g. CEREC/Sirona) or in the dental laboratory (e.g. inLab/Sirona). As an alternative, Telio CAD restorations can be outsourced and fabricated in a milling center.

The restorations can be polished quickly and efficiently or they can be characterized with stains. Furthermore, incisal areas may be customized with light-curing layering materials or Telio Lab materials to attain highly esthetic results.

ADVANTAGES

- Durable shade stability and lifelike fluorescence
- Several shades
- Telio CAD for CEREC and in lab blocks are available in 2 sizes (B40L, B55).
- High material homogeneity due to industrial manufacturing process
- Temporaries can be easily reproduced.

INDICATIONS

- Temporary anterior and posterior crowns
- Temporary anterior and posterior bridges with up to 2 pontics
- Temporary restorations on implants
- Therapeutic restorations to correct TMJ problems and occlusal adjustments

MISCELLANEOUS

ET® INTRA-ORAL COMPOSITE POLISHING PASTE

For over 30 years Brasseler USA®'s line of ET® instruments and products have continued to revolutionize the world of composite restorations. Brasseler USA® is now extending the line by introducing ET® Intra-Oral Composite Polishing Paste. Available in 8 micron grit, this diamond impregnated polishing paste is packed in a convenient syringe, and will help you achieve the highest level of surface smoothness and shine, quickly and easily. Use as a final step after polishing using any of our wide range of composite polishers including DiaComp® and ET® Illustra, to achieve the best results.

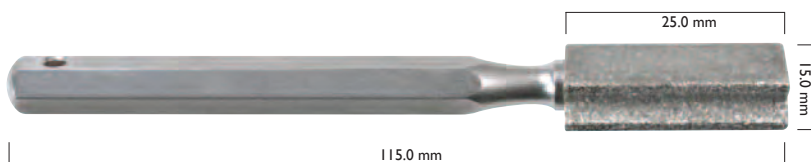


E7CP8M

Volume	2g
Grit	8 Microns

DRESSING DIAMOND

- This design offers a lateral face with a V-shaped groove for the dressing and shaping of polishers and abrasive stones.
- Use adequate disinfection and cleaning agents after each use
- Recommended dressing speed: 15,000-20,000 rpms



16A

1/Pack	16A
--------	-----

DRESSING STONE

- Dressing stone to point polishers



1108

Diameter (mm)	19.0
Depth (mm)	3.0
Unmounted	
1/Pack	1108

ALUMINUM BLOCKS



A701

Holds	40 Straight Handpiece
Blue	A701BLUE



A702

Holds	23 Straight Handpiece
Black	A702BLACK
Blue	A702BLUE
Purple	A702PURPLE
Red	A702RED



A703

Holds	8 Straight Handpiece
Black	A703BLACK
Blue	A703BLUE
Purple	A703PURPLE
Red	A703RED



A638

Holds	10 FG, 10 RA
Black	A638BLACK
Blue	A638BLUE
Purple	A638PURPLE
Red	A638RED



DIAMONDS



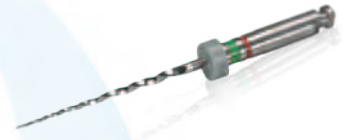
POWER SYSTEMS



POLISHERS



VISION ENHANCEMENT



ENDODONTICS



SURGICAL



HAND INSTRUMENTS



PROCEDURE SYSTEMS



CARBIDES



LABORATORY



To order call 800.841.4522 or fax 888.610.1937.
In Canada call 800.363.3838 or fax 866.330.4454.
Visit our website at BrasselerUSA.com

By Your Side
in Dentistry



BRASSLER USA
DENTAL INSTRUMENTATION