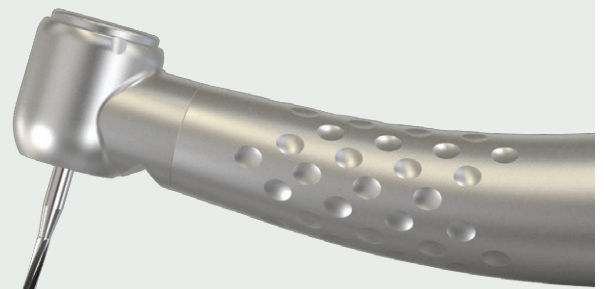




SINGLE-PATIENT STERILE  
INSTRUMENTATION



**BRASSELER**  
USA® BY YOUR SIDE

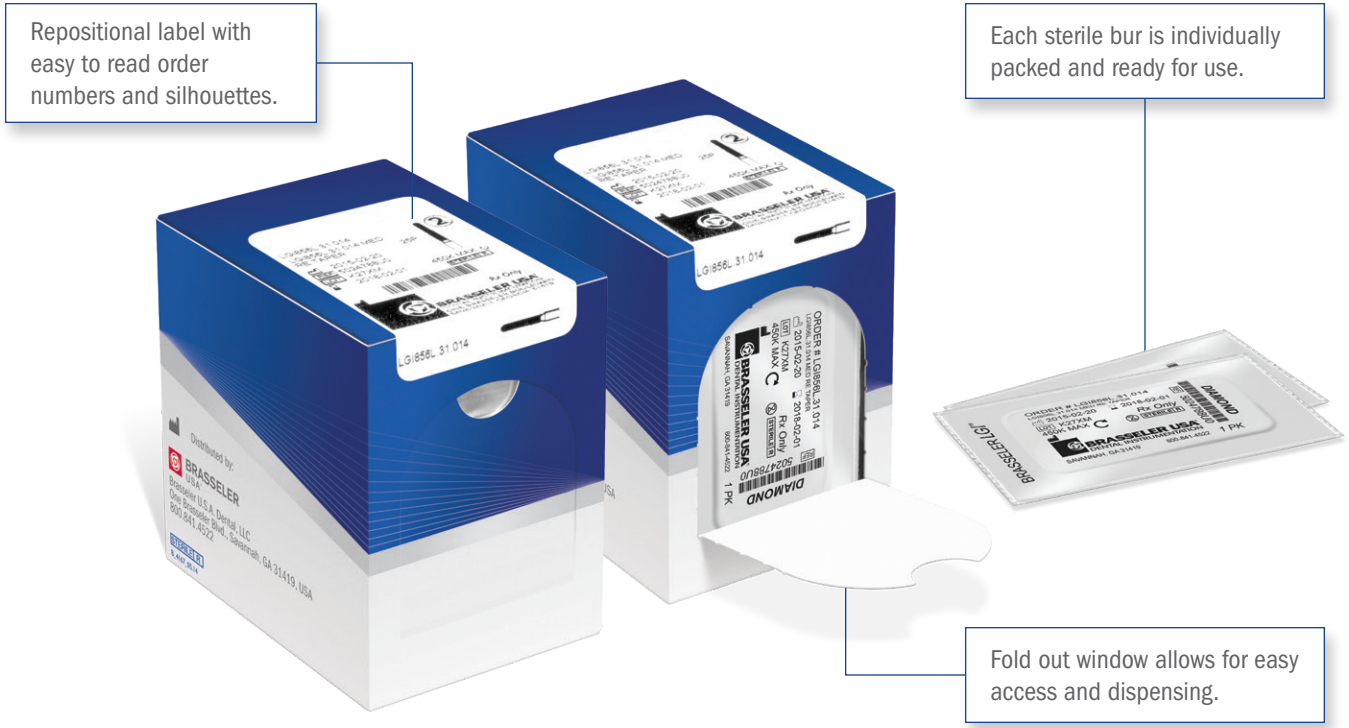


# SINGLE-PATIENT STERILE PACKAGING FOR EASY IDENTIFICATION, STORAGE AND DISPENSING

Brio™ offers a full line of single-patient sterile diamond, carbide, and polishing instruments validated to FDA standards. Lessen your overhead cost by reducing dispensing labor and sterilization.

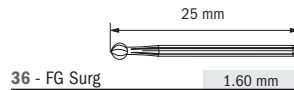
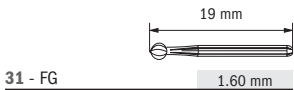
All Brio™ Diamonds, Carbides and Polishers are available in the following packaging:

- Diamonds and Carbides - 25/pack
- *Select Operative Carbides - 100/pack, non-sterile*
- Polishers - 10/pack

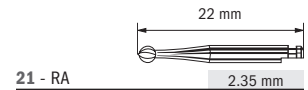


## SHANKS

### FRICION GRIP



### RIGHT-ANGLE LATCH

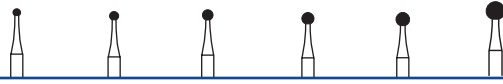


## DIAMOND GRIT SIZES

- Super-Coarse = 152-181µm
- Coarse = 107-151µm
- Medium = 64-126µm
- Fine = 38-64µm
- Extra-Fine = 26-38µm

# BRIOPREP™ STERILE DIAMONDS (25/PACK)

## Round



Order No.	LGI801	LGI801	LGI801	LGI801	LGI801	LGI801
Head Size ( $\frac{1}{10}$ mm)	010	012	014	016	018	023
Cutting Length (mm)	—	—	—	—	—	—

31 - FG - Friction Grip (19 mm)

● Super-Coarse	—	LGI5801	LGI5801	—	LGI5801	LGI5801
● Coarse	—	LGI6801	LGI6801	LGI6801	LGI6801	LGI6801
● Medium	LGI801	LGI801	LGI801	LGI801	LGI801	LGI801
● Fine	—	—	—	LGI8801	LGI8801	LGI8801

## Inverted Cone



Order No.	LGI805
Head Size ( $\frac{1}{10}$ mm)	014
Cutting Length (mm)	1.5

31 - FG - Friction Grip (19 mm)

● Super-Coarse	LGI5805
● Coarse	—
● Medium	LGI805
● Fine	—

## Hourglass



Order No.	LGI813
Head Size ( $\frac{1}{10}$ mm)	014
Cutting Length (mm)	1.5

31 - FG - Friction Grip (19 mm)

● Super-Coarse	—
● Coarse	LGI6813
● Medium	LGI813
● Fine	—

## Pear



Order No.	LGI830	LGI830
Head Size ( $\frac{1}{10}$ mm)	010	012
Cutting Length (mm)	2.8	2.8

31 - FG - Friction Grip (19 mm)

● Super-Coarse	—	—
● Coarse	LGI6830	—
● Medium	LGI830	LGI830
● Fine	—	—

## Flat-End Cylinder

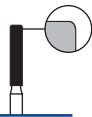


Order No.	LGI835	LGI835
Head Size ( $\frac{1}{10}$ mm)	010	012
Cutting Length (mm)	4.0	4.0

31 - FG - Friction Grip (19 mm)

● Super-Coarse	—	—
● Coarse	LGI6835	LGI6835
● Medium	LGI835	LGI835
● Fine	LGI8835	—

## Modified Flat-End Cylinder



Order No.	LGI837KR
Head Size ( $\frac{1}{10}$ mm)	016
Cutting Length (mm)	8.0

31 - FG - Friction Grip (19 mm)

● Super-Coarse	—
● Coarse	LGI6837KR
● Medium	—
● Fine	—

## Beveled Cylinder



Order No.	LGI885
Head Size ( $\frac{1}{10}$ mm)	012
Cutting Length (mm)	8.0

31 - FG - Friction Grip (19 mm)

● Super-Coarse	—
● Coarse	LGI6885
● Medium	LGI885
● Fine	LGI8885

## Modified Round-End Cylinder



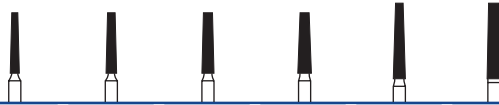
Order No.	LGI878
Head Size ( $\frac{1}{10}$ mm)	012
Cutting Length (mm)	8.0

31 - FG - Friction Grip (19 mm)

● Super-Coarse	LGI5878
● Coarse	LGI6878
● Medium	LGI878
● Fine	LGI8878

# BRIOPREP™ STERILE DIAMONDS (25/PACK)

## Flat-End Taper



Order No.	LGI847	LGI847	LGI847	LGI847	LGI848	LGI848
Head Size ( $\frac{1}{10}$ mm)	012	014	016	018	016	018
Cutting Length (mm)	8.0	8.0	8.0	8.0	10.0	10.0

31 - FG - Friction Grip (19 mm)

● Super-Coarse	LGI5847	LGI5847	LGI5847	LGI5847	LGI5848	LGI5848
● Coarse	LGI6847	LGI6847	LGI6847	LGI6847	LGI6848	LGI6848
● Medium	LGI847	LGI847	LGI847	LGI847	LGI848	LGI848
● Fine	LGI8847	LGI8847	LGI8847	LGI8847	—	—

## Modified Flat-End Taper



Order No.	LGI845KR	LGI845KR	LGI845KR	LGI846KR	LGI847KR	LGI847KR
Head Size ( $\frac{1}{10}$ mm)	016	018	025	016	016	018
Cutting Length (mm)	4.0	4.0	4.0	6.0	8.0	8.0

31 - FG - Friction Grip (19 mm)

● Super-Coarse	—	—	—	—	LGI5847KR	LGI5847KR
● Coarse	LGI6845KR	LGI6845KR	LGI6845KR	—	LGI6847KR	LGI6847KR
● Medium	LGI845KR	LGI845KR	LGI845KR	LGI846KR	LGI847KR	LGI847KR
● Fine	LGI8845KR	LGI8845KR	LGI8845KR	—	LGI8847KR	LGI8847KR

## Round-End Taper



Order No.	LGI850	LGI850	LGI850	LGI850	LGI855	LGI855	LGI855	LGI855
Head Size ( $\frac{1}{10}$ mm)	012	014	016	018	012	014	016	025
Cutting Length (mm)	10.0	10.0	10.0	10.0	6.0	6.0	6.0	7.0

31 - FG - Friction Grip (19 mm)

● Super-Coarse	LGI5850	LGI5850	LGI5850	LGI5850	LGI5855	LGI5855	LGI5855	LGI5855
● Coarse	LGI6850	LGI6850	LGI6850	LGI6850	LGI6855	LGI6855	—	LGI6855
● Medium	LGI850	LGI850	LGI850	LGI850	LGI855	LGI855	—	LGI855
● Fine	LGI8850	LGI8850	LGI8850	LGI8850	—	—	—	—

# BRIOPREP™ STERILE DIAMONDS (25/PACK)

## Round-End Taper

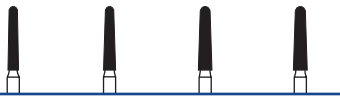


Order No.	LGI856	LGI856	LGI856	LGI856	LGI856	LGI856	LGI868
Head Size ( $\frac{1}{10}$ mm)	012	014	016	018	021	025	012
Cutting Length (mm)	8.0	8.0	8.0	8.0	8.0	8.0	8.0

31 - FG - Friction Grip (19 mm)

● Super-Coarse	LGI5856	LGI5856	LGI5856	LGI5856	LGI5856	LGI5856	—
● Coarse	LGI6856	LGI6856	LGI6856	LGI6856	LGI6856	LGI6856	—
● Medium	LGI856	LGI856	LGI856	LGI856	LGI856	LGI856	LGI868
● Fine	LGI8856	LGI8856	LGI8856	LGI8856	LGI8856	LGI8856	—

## Long Round-End Taper

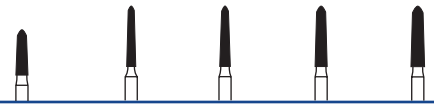


Order No.	LGI856L	LGI856L	LGI856L	LGI856L
Head Size ( $\frac{1}{10}$ mm)	014	016	018	020
Cutting Length (mm)	9.0	9.0	9.0	9.0

31 - FG - Friction Grip (19 mm)

● Super-Coarse	LGI5856L	LGI5856L	LGI5856L	LGI5856L
● Coarse	LGI6856L	LGI6856L	LGI6856L	LGI6856L
● Medium	LGI856L	LGI856L	LGI856L	LGI856L
● Fine	LGI8856L	LGI8856L	LGI8856L	LGI8856L

## Modified Round-End Taper (Curettage)



Order No.	LGI877K	LGI878K	LGI878K	LGI878K	LGI878K
Head Size ( $\frac{1}{10}$ mm)	016	012	014	016	018
Cutting Length (mm)	6.0	8.0	8.0	8.0	8.0

31 - FG - Friction Grip (19 mm)

● Super-Coarse	LGI5877K	LGI5878K	LGI5878K	LGI5878K	LGI5878K
● Coarse	LGI6877K	LGI6878K	LGI6878K	LGI6878K	LGI6878K
● Medium	LGI877K	LGI878K	LGI878K	LGI878K	LGI878K
● Fine	—	LGI8878K	LGI8878K	LGI8878K	LGI8878K

## Flame

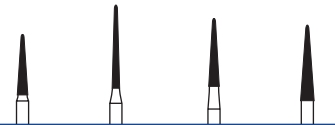


Order No.	LGI862	LGI862	LGI862	LGI863	LGI888
Head Size ( $\frac{1}{10}$ mm)	010	012	014	012	012
Cutting Length (mm)	8.0	8.0	8.0	10.0	8.0

31 - FG - Friction Grip (19 mm)

● Super-Coarse	LGI5862	LGI5862	LGI5862	LGI5863	—
● Coarse	LGI6862	LGI6862	LGI6862	LGI6863	—
● Medium	LGI862	LGI862	LGI862	LGI863	LGI888
● Fine	LGI8862	LGI8862	LGI8862	LGI8863	LGI8888

## Needle



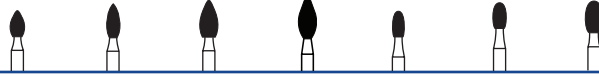
Order No.	LGI858	LGI859	LGI859	LGI859
Head Size ( $\frac{1}{10}$ mm)	014	010	014	018
Cutting Length (mm)	8.0	11.0	10.0	10.0

31 - FG - Friction Grip (19 mm)

● Super-Coarse	LGI5858	—	—	—
● Coarse	LGI6858	LGI6859	—	LGI6859
● Medium	LGI858	LGI859	LGI859	—
● Fine	LGI8858	LGI8859	—	LGI8859
● Extra-Fine	LGI858EF	—	—	—

# BRIOPREP™ STERILE DIAMONDS (25/PACK)

## Football

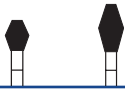


Order No.	LGI368	LGI368	LGI368	LGI369	LGI379	LGI379	LGI379
Head Size (1/10 mm)	016	018	023	025	016	018	023
Cutting Length (mm)	3.2	4.6	5.0	5.0	3.4	3.4	4.2

### 31 - FG - Friction Grip (19 mm)

● Super-Coarse	LGI5368	—	LGI5368	LGI5369	—	LGI5379	LGI5379
● Coarse	LGI6368	LGI6368	LGI6368	LGI6369	LGI6379	LGI6379	LGI6379
● Medium	LGI368	LGI368	LGI368	—	LGI379	LGI379	LGI379
● Fine	LGI8368	LGI8368	LGI8368	LGI8369	LGI8379	LGI8379	LGI8379
● Extra-Fine	—	—	—	—	—	—	LGI379EF

## Barrel



Order No.	LGI811	LGI811
Head Size (1/10 mm)	033	037
Cutting Length (mm)	4.2	7.0

### 31 - FG - Friction Grip (19 mm)

● Super-Coarse	LGI5811	LGI5811
● Coarse	LGI6811	LGI6811
● Medium	—	—
● Fine	—	—

## Wheel

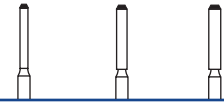


Order No.	LGI909	LGI909
Head Size (1/10 mm)	040	055
Cutting Length (mm)	1.0	1.9

### 31 - FG - Friction Grip (19 mm)

● Super-Coarse	LGI5909	—
● Coarse	—	—
● Medium	—	LGI909
● Fine	—	—

## Margin Refinement



Order No.	LGI10839	LGI10839	LGI10839
Head Size (1/10 mm)	012	014	016
Cutting Length (mm)	1.0	1.2	1.4

### 31 - FG - Friction Grip (19 mm)

● Super-Coarse	—	—	—
● Coarse	—	—	—
● Medium	LGI10839	LGI10839	LGI10839
● Fine	—	—	—

## KS Series



Order No.	LGIKS0	LGIKS1	LGIKS2
Head Size (1/10 mm)	010	012	014
Cutting Length (mm)	7.0	7.0	8.0

### 31 - FG - Friction Grip (19 mm)

● Super-Coarse	—	LGI35005	LGI35005
● Coarse	—	—	—
● Medium	LGI30005	—	—
● Fine	—	—	—

## Depth Cutters



Order No.	LGILVS2	LGILVS1
Head Size (1/10 mm)	016	021
Cutting Length (mm)	6.0	6.0
Depth Cut (mm)	0.3	0.5

### 31 - FG - Friction Grip (19 mm)

● Super-Coarse	—	—
● Coarse	—	—
● Medium	LGI834	LGI834
● Fine	—	—

## Mosquito



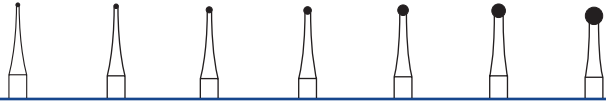
Order No.	LGI392
Head Size (1/10 mm)	016
Cutting Length (mm)	5.0

### 31 - FG - Friction Grip (19 mm)

● Super-Coarse	—
● Coarse	—
● Medium	—
● Fine	LGI8392

# BRIOCUT™ STERILE OPERATIVE CARBIDES (25/PACK)

## Round



US No.	LGI1¼	LGI1½	LGI1	LGI2	LGI4	LGI6	LGI8
Order No.	LGIH1	LGIH1	LGIH1	LGIH1	LGIH1	LGIH1	LGIH1
Head Size (1/10 mm)	005	006	008	010	014	018	023
Cutting Length (mm)	—	—	—	—	—	—	—

### Friction Grip

31 - FG (19mm)	FG♦	FG♦	—	FG♦	FG♦	FG♦	FG♦
36 - FG SURG (25mm)	—	—	—	FG SURG	FG SURG	FG SURG	FG SURG

### Right-Angle Latch

21 - RA (22mm)	RA	RA	RA	RA♦	RA♦	RA♦	RA♦
----------------	----	----	----	-----	-----	-----	-----

## Inverted Cone

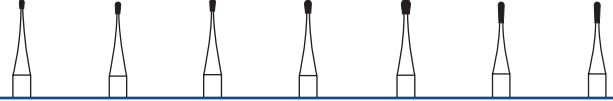


US No.	LGI33½	LGI34	LGI35
Order No.	LGIH2	LGIH2	LGIH2
Head Size (1/10 mm)	006	008	010
Cutting Length (mm)	0.5	0.9	1.1

### Friction Grip

31 - FG (19mm)	FG	FG	FG♦
----------------	----	----	-----

## Pear



US No.	LGI329	LGI330	LGI330S	LGI331	LGI332	LGI245	LGI245S
Order No.	LGIH7	LGIH7	LGIH7S	LGIH7	LGIH7	LGIH245	LGIH245S
Head Size (1/10 mm)	006	008	008	010	012	008	008
Cutting Length (mm)	1.2	2.0	2.0	1.7	1.8	2.8	2.8

### Friction Grip

31 - FG (19mm)	FG	FG♦	FG	FG	FG	FG	FG♦
33 - FG SS (16mm)	—	FG SS	—	—	—	FG SS	—

## Flat-End Fissure



US No.	LGI56	LGI57
Order No.	LGIH21	LGIH21
Head Size (1/10 mm)	009	010
Cutting Length (mm)	4.2	4.2

### Friction Grip

31 - FG (19mm)	FG	FG
----------------	----	----

## Flat-End Cross-Cut Fissure



US No.	LGI556	LGI557	LGI557S	LGI558
Order No.	LGIH31	LGIH31	LGIH31S	LGIH31
Head Size (1/10 mm)	009	010	010	012
Cutting Length (mm)	4.2	4.2	3.7	4.2

### Friction Grip

31 - FG (19mm)	FG♦	FG♦	FG	FG
33 - FG SS (16mm)	—	FG SS	—	—
36 - FG SURG (25mm)	—	FG SURG	—	FG SURG

♦Also available in 100-pack, non-sterile

# BRIOCUT™ STERILE OPERATIVE CARBIDES (25/PACK)

## Round-End Fissure



US No.	LGI1157	LGI1158
Order No.	LGIH21R	LGIH21RS
Head Size (1/10 mm)	010	012
Cutting Length (mm)	4.2	4.2
Friction Grip		
31 - FG (19mm)	FG	FG

## Round-End Cross-Cut Fissure



US No.	LGI1557	LGI1557S	LGI1558	LGI1558S
Order No.	LGIH031RS	LGIH031RS	LGIH031RS	LGIH031RS
Head Size (1/10 mm)	010	010	012	012
Cutting Length (mm)	3.9	3.9	4.0	4.0
Friction Grip				
31 - FG (19mm)	FG	FG	FG	FG
36 - FG SURG (25mm)	FG SURG	—	—	—

## Flat-End Taper Fissure



US No.	LGI169	LGI170	LGI171
Order No.	LGIH23	LGIH23	LGIH23
Head Size (1/10 mm)	009	010	012
Cutting Length (mm)	4.2	4.2	4.2
Friction Grip			
31 - FG (19mm)	FG	FG	FG

## Long Flat-End Taper Fissure



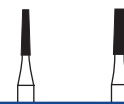
US No.	LGI169L	LGI170L
Order No.	LGIH23L	LGIH23L
Head Size (1/10 mm)	009	010
Cutting Length (mm)	5.2	6.0
Friction Grip		
31 - FG (19mm)	FG♦	FG

## Flat-End Taper Cross-Cut Fissure



US No.	LGI699	LGI700	LGI701	LGI702	LGI703
Order No.	LGIH33	LGIH33	LGIH33	LGIH33	LGIH33
Head Size (1/10 mm)	009	010	012	016	021
Cutting Length (mm)	4.2	4.2	4.2	4.4	4.8
Friction Grip					
31 - FG (19mm)	FG	FG	FG	FG	—
36 - FG SURG (25mm)	—	—	FG SURG	FG SURG	FG SURG

## Long Flat-End Taper Cross-Cut Fissure



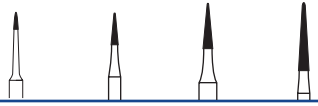
US No.	LGI701L	LGI702L
Order No.	LGIH33L	LGIH33L
Head Size (1/10 mm)	012	016
Cutting Length (mm)	6.0	6.0
Friction Grip		
31 - FG (19mm)	FG	—
36 - FG SURG (25mm)	—	FG SURG

♦Also available in 100-pack, non-sterile



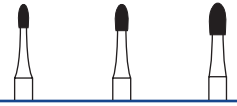
# BRIOCUT™ STERILE FINISHING CARBIDES (25/PACK)

## ET® Series



US No.	LGIET3	LGIET4	LGIET6	LGIET9
Order No.	LGIH132	LGIH133	LGIH134	LGIH135
Head Size (1/10 mm)	008	010	014	014
Cutting Length (mm)	3.0	4.0	6.0	9.0
31 - FG - Friction Grip (19 mm)				
8 Blade	LGIET3	LGIET4	LGIET6	LGIET9

## Football



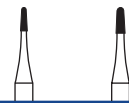
US No.	LGI7404	LGI7406	LGI7408
Order No.	LGIH379	LGIH379	LGIH379
Head Size (1/10 mm)	014	018	023
Cutting Length (mm)	3.1	3.5	4.2
31 - FG - Friction Grip (19 mm)			
8-12 Blade	LGI7404	LGI7406	LGI7408

## Round



US No.	LGI7004	LGI7006	LGI7008
Order No.	LGIH41	LGIH41	LGIH41
Head Size (1/10 mm)	014	018	023
Cutting Length (mm)	—	—	—
31 - FG - Friction Grip (19 mm)			
8-12 Blade	LGI7004	LGI7006	LGI7008

## Bullet



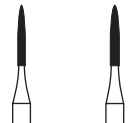
US No.	LGI7801	LGI7803
Order No.	LGIH247	LGIH247
Head Size (1/10 mm)	009	012
Cutting Length (mm)	3.2	3.4
31 - FG - Friction Grip (19 mm)		
8-12 Blade	LGI7801	LGI7803

## Flame



US No.	—	LGI7104	LGI7901	LGI7902	LGI7903
Order No.	LGIH274	LGIH46	LGIH246	LGIH246	LGIH246
Head Size (1/10 mm)	016	014	009	010	012
Cutting Length (mm)	3.5	3.5	3.6	3.6	3.6
31 - FG - Friction Grip (19 mm)					
8-12 Blade	LGIH274	LGI7104	LGI7901	LGI7902	LGI7903

## Long Flame



US No.	—	—
Order No.	LGIH48L	LGIH48L
Head Size (1/10 mm)	010	012
Cutting Length (mm)	8.0	8.0
31 - FG - Friction Grip (19 mm)		
8-12 Blade	LGIH48L	LGIH48L

## Interproximal



US No.	LGI7602
Order No.	LGIH50
Head Size (1/10 mm)	010
Cutting Length (mm)	6.0
31 - FG - Friction Grip (19 mm)	
8-12 Blade	LGI7602

## Round-End Taper



US No.	LGI7664	LGI7675
Order No.	LGIH375R	LGIH375R
Head Size (1/10 mm)	014	016
Cutting Length (mm)	8.0	8.0
31 - FG - Friction Grip (19 mm)		
8-12 Blade	LGI7664	LGI7675

## Modified Round-End Cylinder



US No.	—
Order No.	LGIH283
Head Size (1/10 mm)	012
Cutting Length (mm)	8.0
31 - FG - Friction Grip (19 mm)	
8-12 Blade	LGIH283

## Endodontic Access



US No.	—
Order No.	LGIH269GK
Head Size (1/10 mm)	016
Cutting Length (mm)	9.0
31 - FG - Friction Grip (19 mm)	
8-12 Blade	LGIH269GK

\*BrioCut Finishing Carbides do not have a red band. Available in fine finishing 8-12 blade carbides only.

# BRIOSHINE™ STERILE POLISHERS (10/PACK)

## ET® Illustra™ Composite Polishers

- ET® Illustra™ polishers come in two abrasive grits: dark purple initial “satin” polish and light purple final high-gloss shine
- Dark Purple - Recommended speed: 10,000-12,000 rpm
- Light Purple - Recommended speed: 2,000-10,000 rpm
- Sterilization: Sterile



Order No.	LGI132	LGI232	LGI135	LGI235
Head Size (1/10 mm)	050	050	060	060
Cutting Length (mm)	10.0	10.0	10.0	10.0
Grit	Medium	Fine	Medium	Fine

### Righ-Angle Latch

21 - RA (22mm)	LGI132RA	LGI232RA	LGI135RA	LGI235RA
----------------	----------	----------	----------	----------

## Dialite® Porcelain Polishers

- Diamond impregnated three-step porcelain polishing system ideal for adjusting and polishing porcelain restorations
- Recommended speed: Intra-Oral 5,000-7,000 rpm
- Sterilization: Sterile



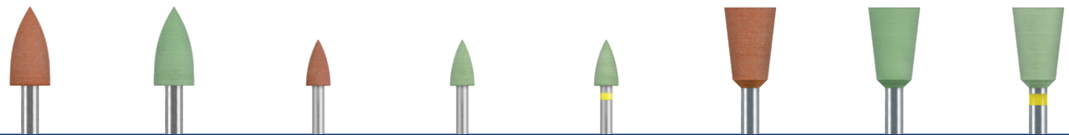
Order No.	LGIW16DG	LGIW16DM	LGIW16D	LGIW17DG	LGIW17DM	LGIW17D
Head Size (1/10 mm)	040	040	040	060	060	060
Cutting Length (mm)	10.0	10.0	10.0	7.5	7.5	7.5
Grit	Coarse	Medium	Fine	Coarse	Medium	Fine

### Righ-Angle Latch

21 - RA (22mm)	LGIW16DG.21	LGIW16DM.21	LGIW16D.21	LGIW17DG.21	LGIW17DM.21	LGIW17D.21
----------------	-------------	-------------	------------	-------------	-------------	------------

## MetaPro™ Brown, Green & Super-Green Silicone Polishers

- Silicone polishers for precious and semi-precious metals: amalgam and gold
- Recommended speed:
  - 31-FG: 7,000 rpm
  - 21-RA Latch: 7,000 rpm
- Sterilization: Sterile



Order No.	LGI202	LGI322	LGI203	LGI323	LGIBRY0133	LGI205	LGI325	LGIBRY0135
Head Size (1/10 mm)	050	050	030	030	030	060	060	060
Cutting Length (mm)	10.0	10.0	6.0	6.0	6.0	9.5	9.5	9.5
Grit	Coarse	Medium	Coarse	Medium	Fine	Coarse	Medium	Fine

### Righ-Angle Latch

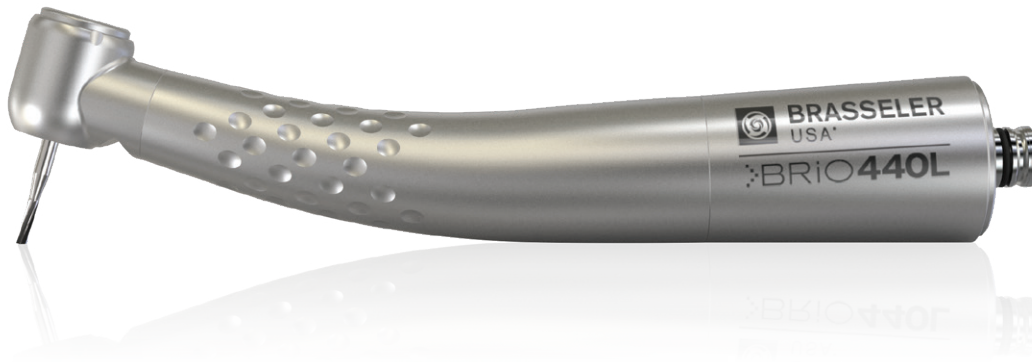
21 - RA (22mm)	LGI202.21.050	LGI322.21.050	LGI203.21.030	LGI323.21.030	LGIBRY0133.21	LGI205.21.060	LGI325.21.060	LGIBRY0135.21
----------------	---------------	---------------	---------------	---------------	---------------	---------------	---------------	---------------

### Friction Grip

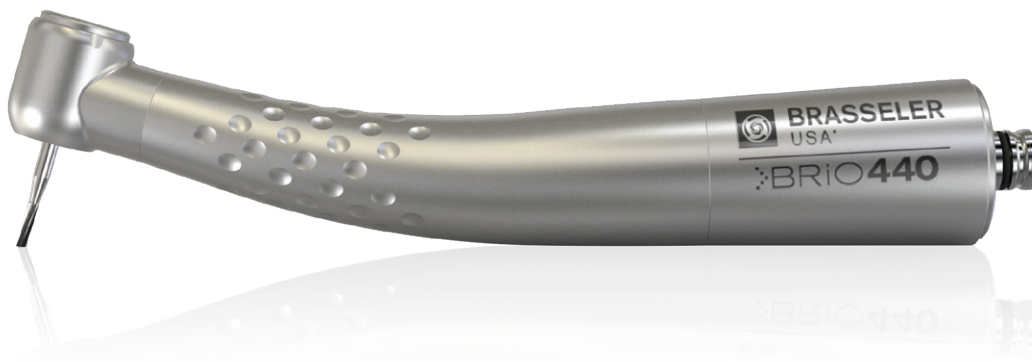
31 - FG (19mm)	—	—	LGI0053.31.030	LGI0153.31.030	LGIBRY0153.31	LGI0055.31.060	LGI0155.31.060	LGIBRY0155.31
----------------	---	---	----------------	----------------	---------------	----------------	----------------	---------------

# BRiO 440

The Brio440 handpiece from Brasseler USA offers a powerful yet economical alternative in high speed handpieces. Featuring ceramic ball bearings, push button chuck, 4-port water spray and swivel quick-disconnect, the Brio440 provides a unique mix of performance and value in a high speed handpiece.



**Brio440L Optic**  
**Item Number: 5026058U0**  
 Torque: 20 Watts  
 Weight: 50g  
 Head Height: 12.3mm  
 Head Diameter: 10.5mm



**Brio440 Non-Optic**  
**Item Number: 5026059U0**  
 Torque: 20 Watts  
 Weight: 47g  
 Head Height: 12.3mm  
 Head Diameter: 10.5mm

## NL10LED

**Item Number: 5021283U0**

LED Fiber Optics  
 6 Pin Tubing Connection



## NL10Ti

**Item Number: 5021281U0**

Fiber Optics  
 6 Pin Tubing Connection



## NL11Ti

**Item Number: 5021282U0**

Fiber Optics  
 5 Hole Tubing Connection



## N10Ti

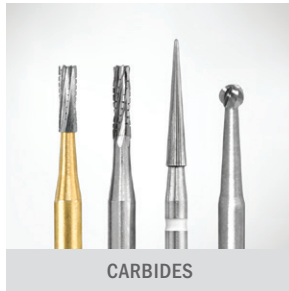
**Item Number: 5021278U0**

Non-Optic  
 4 Hole Tubing Connection

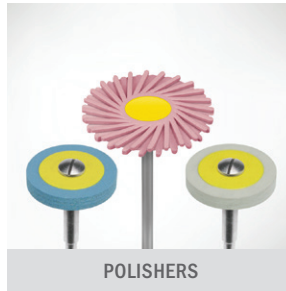




DIAMONDS



CARBIDES



POLISHERS



PROCEDURE SYSTEMS



BIOCERAMICS



Since 1976, our absolute focus has been to develop products and provide services that support the practice of core operatory procedures. Today, Brasseler USA® is the premier dental instrumentation company in North America offering the most extensive selection of dental and surgical instrumentation under one brand.



HANDPIECES



ENDODONTICS



SMALL EQUIPMENT



HYGIENE



HAND INSTRUMENTS



ORAL SURGERY



LABORATORY INSTRUMENTS



Visit our website at [BrasselerUSA.com](http://BrasselerUSA.com)

To order call 800.841.4522 or fax 888.610.1937. In Canada call 800.363.3838

