

INNOVATIONS

*Creating innovative dental instrumentation
for over 38 years.*



To order call 800.841.4522 or fax 888.610.1937.
In Canada call 800.363.3838 or fax 866.330.4454.
Visit our website at BrasselerUSA.com



LEADING THE INDUSTRY: BRASSELER USA



Don L. Waters

Chairman of the Board,
President & Chief Executive Officer

Since its founding in 1976 by Peter Brasseler, our Company has been known for offering high-quality products and being an innovator in the dental industry. In fact, innovation is so much a part of Brasseler USA's culture that our employee newsletter is named "The Innovator."

Our Company's mission is providing innovative and efficient instrumentation you can trust. We develop solutions through a combination of material science, engineering know-how, manufacturing excellence, and practitioner testing, to real world challenges faced by dentists.

Brasseler USA's product development process focuses on identifying needs of dental practitioners. To discover these needs, our District Sales Managers and our Savannah, Georgia-based Innovations Team constantly speak with doctors and lab technicians about the most current esthetic techniques and new materials, and related challenges they face in the operatory. We also work with dental educators and teaching clinicians to identify future procedural trends and expected practitioner needs. All of this field intelligence is gathered and discussed at weekly Innovations Team meetings.



DURABRAZE®

Next-Generation Technology Designed to Minimize Clogging

Our patented DuraBrazed line introduces new diamond instrument technology to your operatory. The precision-engineered instruments feature revolutionary improvements in diamond crystal bonding and spacing. They deliver better performance, precision, and predictability to your crown prep procedures.

You will notice a significant difference with DuraBrazed. Bulk reduction of tooth structure will be smoother and more precise with less vibration. Your instruments will last longer, meaning fewer bur changes and less chair time, with consistent performance prep after prep. DuraBrazed instruments perform this way due to new SpotBrazing™ technology. This patented process provides more open spacing between crystals and more consistent cutting edges, creating:

“ Predictable cutting efficiency... It's efficient not only **because one diamond does more**, but because I don't lose time stopping and switching or cleaning. ”

Lee Ann Brady, DMD
www.LeeAnnBrady.com

ADVANCED SELF-CLEANING

Minimizes clogging using a patented process that creates channels allowing water to flow from the handpiece spray to the critical tip, flushing out debris.

RESULT: Less heat generation and minimal loading, for more precise finish lines.

OUTSTANDING CUTTING EFFICIENCY

More diamond crystals are in contact with tooth structure.

RESULT: Efficient consistent cutting, ideal for multiple preps.

MAXIMUM PRECISION

Uniform diamond crystals are precisely distributed over the instrument surface.

RESULT: Predictable prep design and improved prep surface quality and readability.

IMPROVED HANDLING & FEEL

The precision diamond layer provides an ultra-smooth feel, less vibration, and better handling.

RESULT: Improved accuracy, control and predictability.



DIALITE® DIAMONDS



- Three-phase, multi-layered technology
- Hybrid, fine particle sizes
- Uniform particle dispersion
- Designed for adjusting and finishing of Zirconia and Lithium Disilicate
- Endo access through Zirconia and Lithium Disilicate crowns
- Recommended with light pressure and a copious amount of water
- Recommended speed:
Removal: 100,000-120,000 rpm
Adjusting: 40,000-60,000 rpm

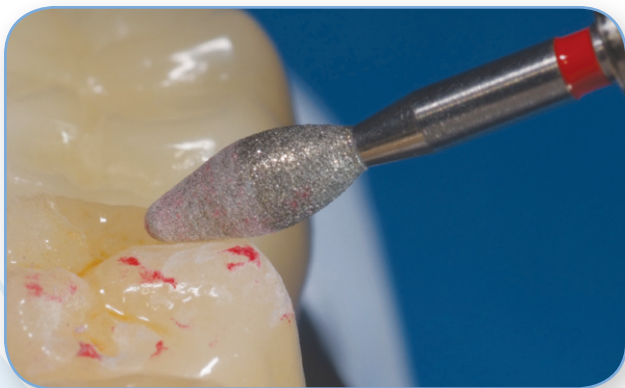


Order No.	369D	801LD	856D
Head Size (1/16 mm)	025	014	016
Cutting Length (mm)	5.5	-	8.0

Friction Grip

31 - FG (19 mm)

● Fine	8369DF	8801LDF	8856DF
● Extra-Fine	369DEF	801LDEF	856DEF

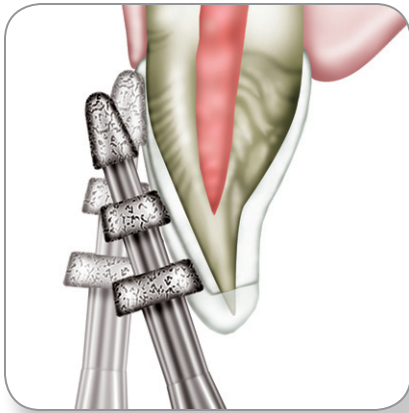


INNOVATIVE DEPTH REDUCTION BURS

Developed by Dr. Robert Winter, Prosthodontist/Master Ceramist, these depth reduction burs are for outcome-based preparation design for anterior veneers. Each specific depth-cutting bur is designed with the tooth morphology and color in mind.

The depth reduction bur concepts and philosophy presented in Restorative Design clinics are available through **SPEAR** Education learning programs on www.speareducation.com.

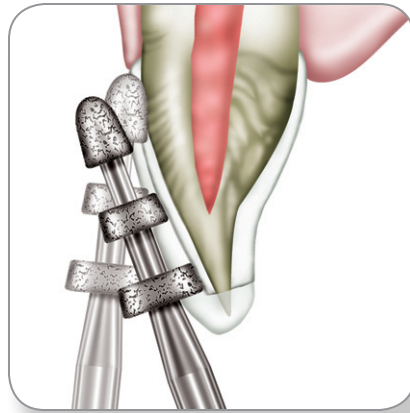
MINIMAL
.3mm / .5mm / .7mm



RWMIN

- 0-1 shade change
- Preserves enamel
- Minor morphology changes

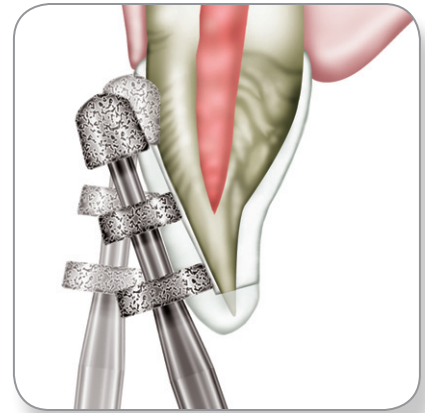
CONVENTIONAL
.5mm / .7mm / .9mm



RWCONV

- 1-2 shade change
- Preserves enamel
- Moderate morphology changes

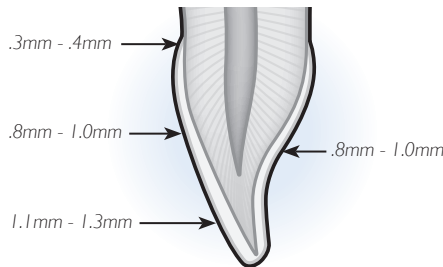
EXTENSIVE
.8mm / 1.0mm / 1.2mm



RWEXT

- 2-3 shade change
- Masking of the underlying tooth structure is required
- Using an additive ceramic technique for position and morphology changes, enamel preservation is possible in the incisal half of the tooth

AVERAGE ENAMEL DEPTH



US No.	RWMIN	RWCONV	RWEXT
Order No.	868C	868D	868E
Head Size (1/16 mm)	026	030	034
Cutting Length (mm)	6.0	6.5	7.5
Depth Cut (mm)	0.3 / 0.5 / 0.7	0.5 / 0.7 / 0.9	0.8 / 1.0 / 1.2

Friction Grip

3I - FG (19 mm)

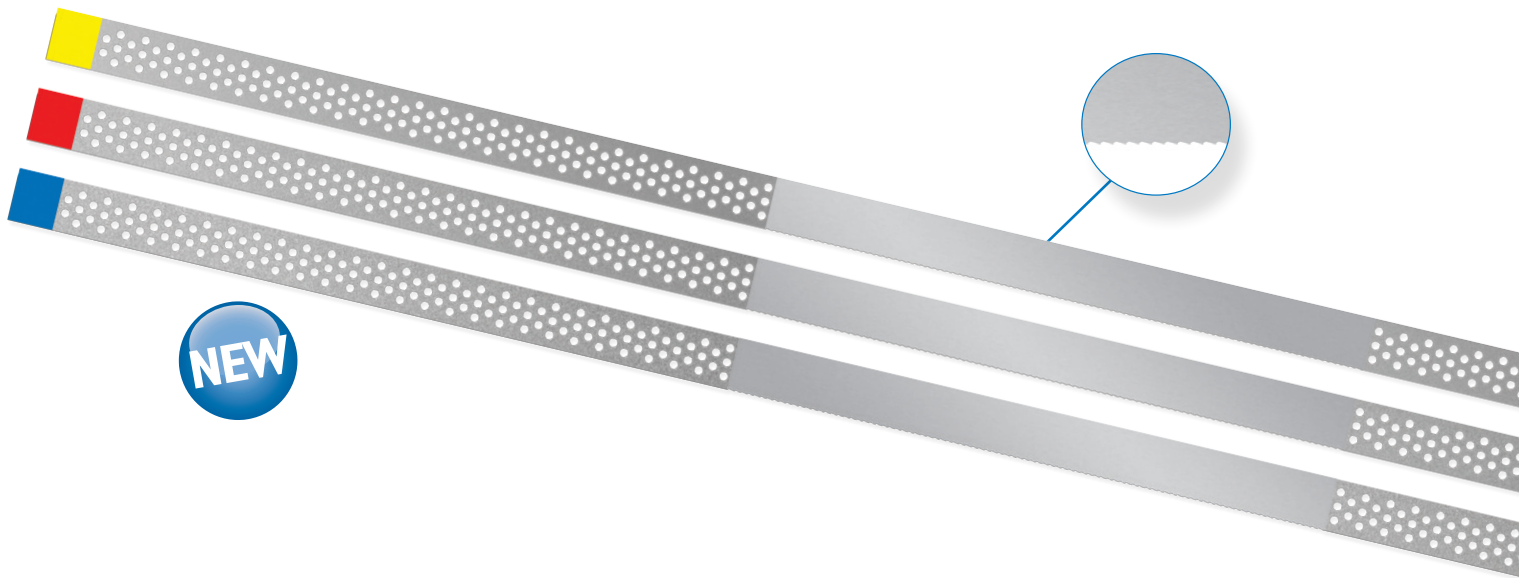
● Medium

868C	868D	868E
------	------	------

VISIONFLEX™

Diamond/Serrated Saw Combo Diamond Strips

In addition to our extensive interproximal strip line, Brasseler USA is introducing a new combination diamond and saw blade strip. This versatile strip will help meet all of your interproximal finishing and stripping needs by allowing you to move quickly from one application to the next, eliminating the need for two different strips. The serrated saw blade is ideal for opening tight interproximal contacts or cement removal, while the perforated diamond portion quickly strips enamel during orthodontics or finishes composite and porcelain restorations. Available in three grits (extra-fine, fine and medium), these strips will help you save time and money.



Order No.	Thickness (mm)	Width (mm)	Length (mm)	Saw Area (mm)	Diamond Area (mm)	Grit	Single/Double Sided	Qty/Pack
WS37EFCOMBO	0.08	3.75	147	40	53.5, 53.5	● Extra-Fine	Single	10
WS37FCOMBO	0.10	3.75	147	40	53.5, 53.5	● Fine	Single	10
WS37COMBO	0.13	3.75	147	40	53.5, 53.5	● Medium	Single	10
WS37ACOMBO	-	3.75	147	40	53.5, 53.5	Asst. (EF, F, M)	Single	15 (5 ea)

Autoclavable Diamond Strip Holder

The A101 is a fully sterilizable aluminum tube that protects strips during sterilization.



A101

Holds	Diamond Strips
Blue	A101B

ET Flex[™]

INTERPROXIMAL FINISHING AND CONTOURING STRIPS

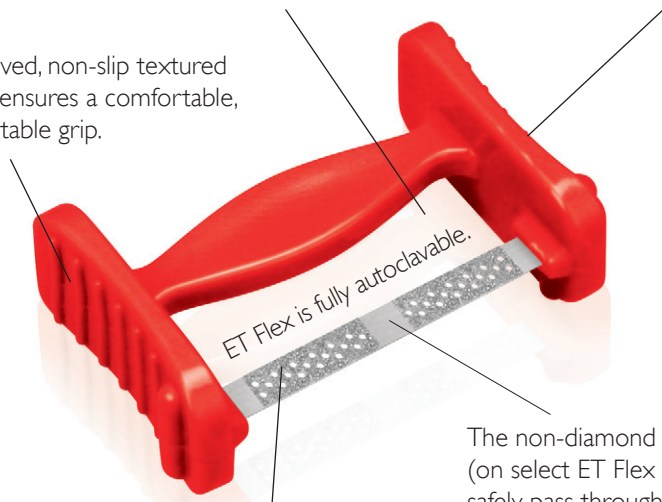
THE PATENTED, SAFE, FLEXIBLE DESIGN OF ET FLEX[™] ALLOWS YOU TO ADAPT THE STRIP TO MEET ALL OF YOUR INTERPROXIMAL, FINISHING AND CONTOURING NEEDS.

- ✓ Orthodontics: IPR/Tooth Slenderizing
- ✓ Composite Restorations: Contouring/Finishing all Interproximal Surfaces
- ✓ Crown & Bridge Restorations: Cement Removal and Clean-Up Following Cementation

ET Flex's open design and strip depth allow you to easily reach all cervical areas of interproximal restorations.

ET Flex is color coded for grit designation.

ET Flex's curved, non-slip textured surface area ensures a comfortable, secure, and stable grip.



The VisionFlex[™] mesh design prevents the strip from loading up as quickly as non-perforated strips, which improves efficiency and visibility.

The non-diamond coated Gateway[™] (on select ET Flex strips) allows you to safely pass through tight contacts for interproximal finishing of composite restorations and cement clean-up in the cervical area.



Grip the ET Flex at or above the crossbar and the strip becomes taut for contact areas.



Grip the ET Flex below the crossbar and the strip curves allowing you to perfectly adapt to any cervical or contact area contour.

Order No.	Thickness (mm)	Width (mm)	Length (mm)	Gateway Area (mm)	Grit	Single/Double Sided	Qty/Pack
ET25XFSS	0.08	2.5	20.0	2.5	● Extra-Fine	Single	10
ET25FSS	0.10	2.5	20.0	2.5	● Fine	Single	10
ET25MSS	0.13	2.5	20.0	2.5	● Medium	Single	10
ET37XFSS	0.08	3.75	20.0	-	● Extra-Fine	Single	10
ET37FSS	0.10	3.75	20.0	-	● Fine	Single	10
ET37MSS	0.13	3.75	20.0	-	● Medium	Single	10
ET37CSS	0.18	3.75	20.0	-	● Coarse	Single	10
ET37XCSS	0.22	3.75	20.0	-	● Extra-Coarse	Single	10
ET37FDS	0.15	3.75	20.0	-	● Fine	Double	10
ET37MDS	0.21	3.75	20.0	-	● Medium	Double	10
ET37CDS	0.30	3.75	20.0	-	● Coarse	Double	10
ET37XCDS	0.40	3.75	20.0	-	● Extra-Coarse	Double	10
ET37SER	0.05	3.75	20.0	-	● Saw Blade	-	10
ETASST	Includes one of each ET Flex						
K0223	Includes one of each ET Flex in an A625 blue aluminum block						

“SUPER PREMIUM” MULTI-PURPOSE CARBIDES



SABRECUT®

ALLOY (AMALGAM) REMOVAL CAVITY PREPARATION

- Multi-Purpose: Ideal for cavity preparation and alloy (amalgam) removal
- Quality Manufactured: Single piece construction carbide
- Available in clinic pack

SMOOTH

The unique blade configuration with fine cross-cuts will generate less vibration (chatter) and leave a smoother finish.

AGGRESSIVE

The unique blade configuration and fine cross-cuts make SabreCut carbides extremely efficient at cutting amalgam, metal, enamel and dentin.

RUGGED

- Single-piece vs. two-piece construction carbide
- Minimizes separation
 - Minimizes wear and tear on handpiece turbines
 - Reduces chair time

Note: Two-piece conventional operative carbides are NOT recommended to remove old alloy restorations due to the high risk of separation.

END-CUTTING

With sharp, deeply ground transversing blades at the tip, SabreCut™ carbides exhibit rapid end-cutting, making them ideal for restoration removal.

* Internal testing performed on high carbon steel – hardness of 195 HV10 (Vickers) which is similar to the hardness of popular Nickel/Chrome/Molybdenum alloys used in crown and bridge. Complete testing available upon request.



US No.	330SC	331SC*	245SC	557SC	1557SC	1558SC**
Description	Pear	Pear	Pear	Flat-End Fissure	Round-End Fissure	Round-End Fissure
Head Size (1/10 mm)	008	010	008	010	010	012
Cutting Length (mm)	2.0	1.9	2.7	3.7	3.9	4.0
Friction Grip						
31 - FG (19 mm)	330SC	331SC*	245SC	557SC	1557SC	1558SC**

* Compare to SS White® Great White® No. 1
** Compare to SS White® Great White® No. 2



SS White® and Great White® are not registered trademarks of Brasseler USA. Scan code to visit Brasseler/SabreCut website and watch product video.

EX™ SERIES CARBIDES



EX™ Series cross-cut trimming and finishing carbides reduce the number of steps, allowing you to finish all modern composites with greater efficiency.

- Cross-cut and fluting configuration allows you to trim and finish very hard composites with a great deal of control and speed.
- EX™ Series finishing carbides are available in common standard and ET® shapes.
- Reduces the number of finishing steps from three to two:
 - Step 1: Gross trim and contour composite with an EX series instrument.
 - Step 2: A 30-bladed finishing carbide can be used after the EX series carbide to create a milled glass-like finish on the composite, which will reduce the polishing time.

EX™ ET® SERIES CARBIDES

EX™ ET® Series instruments have the same great benefits of standard ET® carbides, such as straight blades, a safety tip, and cross-cuts, which gives you additional control over the contouring and shaping of the composite in fewer steps!

Safe-End



US No.	ET4	ET6	ET9
Order No.	H133	H134	H135
Head Size (1/10 mm)	010	014	014
Cutting Length (mm)	4.0	6.0	9.0

Friction Grip

31 - FG (19 mm)

● Cross-Cut (15 Blade) ET4EX ET6EX ET9EX

EX™ SERIES CARBIDES



US No.	OS1 / 7408	-	-	7901	7902	7903	7903L
Order No.	H379	H48L	H48L	H246	H246	H246	H246L
Head Size (1/10 mm)	023	010	012	009	010	012	012
Cutting Length (mm)	4.2	8.0	8.0	3.6	3.6	3.6	5.4

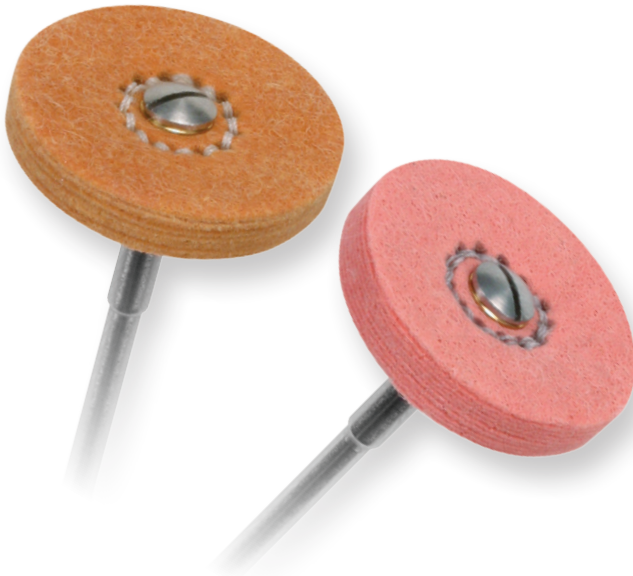
Friction Grip

31 - FG (19 mm)

● Cross-Cut (15 Blade) 7408EX H48LEX H48LEX 7901EX 7902EX 7903EX 7903LEX

ET[®] PROVIPRO[™] POLISHERS

Materials: Acrylic & Bis-Acryl



Polishing provisionals with pumice and paste is messy and time consuming. Brasseler USA's new ET[®] ProviPro[™] allows you to polish at chairside, saving both polishing and clean-up time.

This easy-to-use, two-step system will quickly allow you to achieve a high-gloss shine and an ultra-smooth surface on composite and acrylic based provisionals. ET[®] ProviPro[™] polishers will eliminate the need for a bench lathe and rag wheel and are ideal for polishing crevices, grooves, contact areas and textured surfaces.

Available in medium and fine grits, these buffs, available exclusively from Brasseler USA, will minimize polishing time and save you money.

- Aluminum oxide impregnated cotton buff for polishing acrylic and composite based provisional material
- Recommended speed: 10,000-15,000 rpm
- Sterilization: Single Use



Order No.	SWR22M	SWR22F
Head Size (1/10 mm)	220	220
Cutting Length (mm)	3.0	3.0
Grit	medium	fine
Unmounted		
12/Pack	SWR22M	SWR22F

Use Mandrel 305.11



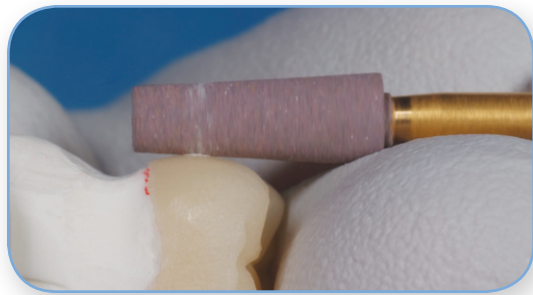
Provisional polished with ET[®] ProviPro[™]

LD GRINDERS™

Materials: Zirconia, Lithium Disilicate & Feldspathic Porcelain

High heat created by rotary instruments can lead to micro-fracturing of modern ceramic materials. Brasseler USA's new LD Grinders™ are made of a heat resistant, diamond impregnated, rubberized material which maintains a low temperature and will minimize this risk of micro-fracture.

LD Grinders™ are available in medium and coarse grits in cylinder, flat-end taper, and wheel shapes for extra-oral use. Also available for intra-oral use in a small point ideal for minor adjustments. Exclusively from Brasseler USA, LD Grinders™ are durable and long-lasting and will minimize your finishing and polishing time!



- Adjusting and contouring Lithium Disilicate and Zirconia materials
- Recommended speed: 8,000-12,000 rpm
- Dress with Arkansas Stone
- Sterilization: Autoclave

EXTRA-ORAL



Order No.	LD13C	LD13M	LD14C	LD14M	LD15C	LD15M
Head Size (1/10 mm)	040	040	050	050	150	150
Cutting Length (mm)	10.0	10.0	13.0	13.0	3.0	3.0
Grit	coarse	medium	coarse	medium	coarse	medium

11 - HP - Straight Handpiece (44.5 mm)

I/Pack	LD13C	LD13M	LD14C	LD14M	LD15C	LD15M
--------	-------	-------	-------	-------	-------	-------

INTRA-ORAL



Order No.	LD11MLD.RA	LD11CZR.RA
Head Size (1/10 mm)	030	030
Cutting Length (mm)	7.5	7.5
Grit	medium	coarse

21 - RA - Right-Angle Latch (22 mm)

5/Pack	LD11MLD.RA	LD11CZR.RA
--------	------------	------------

Tip: Recommend Medium Pink LD Grinders for Lithium Disilicate and Coarse Green LD Grinders for Zirconia.

DIALITE® FEATHER LITE™

Materials: Ceramic



Brasseler USA introduces a revolutionary addition to the Dialite family of porcelain polishers: Feather Lite. Feather Lite's flexible spirals are designed to separate and "feather" out. This feathering helps maintain surface differentiation when polishing porcelain restorations, helping the polisher quickly adapt to any surface including occlusal, interproximal and contact areas. Available in a 26mm head size and in coarse, medium and fine grits, the new Dialite Feather Lite polisher will help save chair time as you quickly polish your porcelain restorations extra-orally. Use Dialite Feather Lite as the final polish for all your crown and bridge restorations.

“ The Brasseler Dialite Feather Lite is **by far** the best polisher system I have ever used to give a natural finish to developmental and fine grooves on anterior teeth and occlusal anatomy on posterior teeth. ”

Edward A. McLaren, DDS



K0277
Dialite Feather Lite
Extra-Oral Kit

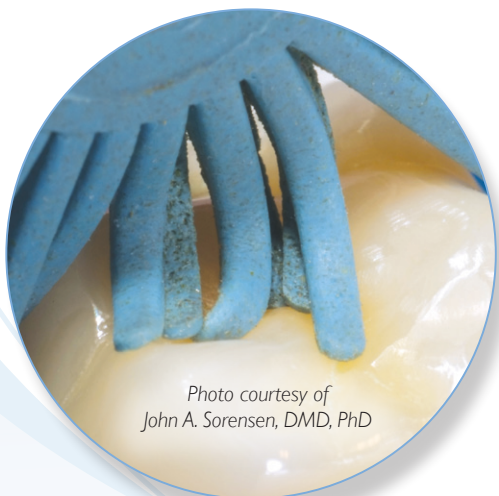
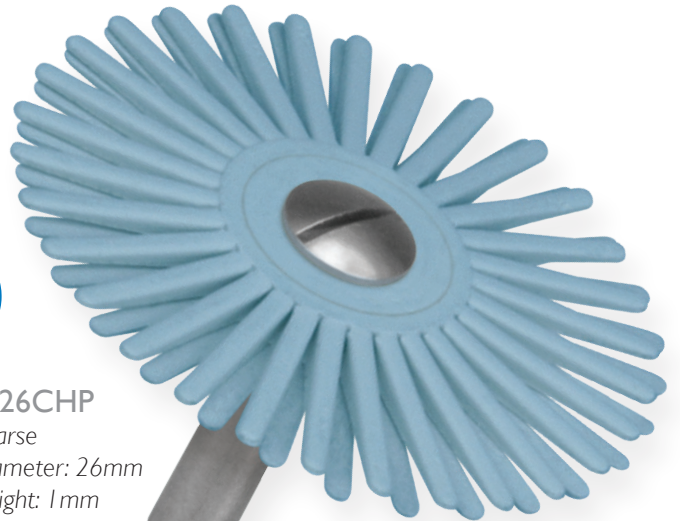


Photo courtesy of
John A. Sorensen, DMD, PhD



FL26CHP
Coarse
Diameter: 26mm
Height: 1mm



FL26MHP
Medium
Diameter: 26mm
Height: 1mm



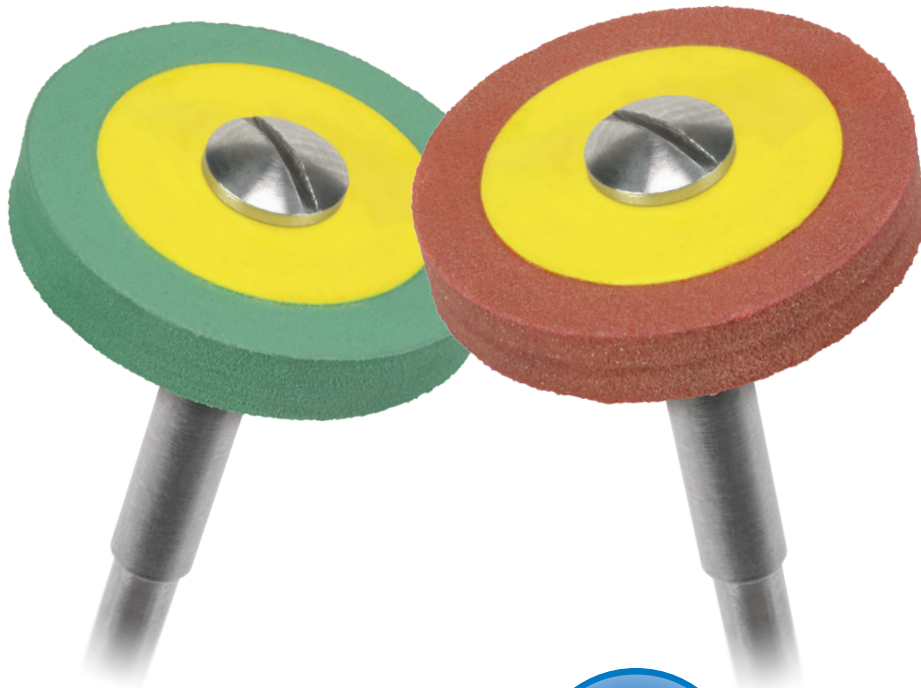
FL26FHP
Fine
Diameter: 26mm
Height: 1mm

“ The revolutionary new Dialite Feather Lite is the first system to polish occlusal anatomy to a high brilliant luster efficiently and easily. The Feather Lite polishes grooves and elaborate occlusal structure effortlessly. ”

John A. Sorensen, DMD, PhD, FACP

DIALITE® ZR & LD

Materials: Zirconia & Lithium Disilicate



POLISHING TECHNOLOGY FOR MODERN CERAMICS

Your modern ceramic restorations have not reached full potential until they have been polished with Dialite diamond impregnated polishers. From the makers of Dialite come two new revolutionary systems that are specifically designed to adjust and polish modern ceramics. Dialite ZR for Zirconia and Dialite LD for Lithium Disilicate allow you to quickly achieve maximum surface smoothness, enhancing your restoration's longevity and minimizing wear of opposing dentition. Each two-step system is available in both intra-oral and extra-oral shapes.



K0262
Dialite ZR Intra-Oral
Adjusting, Finishing &
Polishing System



K0238
Dialite ZR Zirconia
Extra-Oral Polishing System



K0240
Dialite LD Lithium Disilicate
Extra-Oral Polishing System



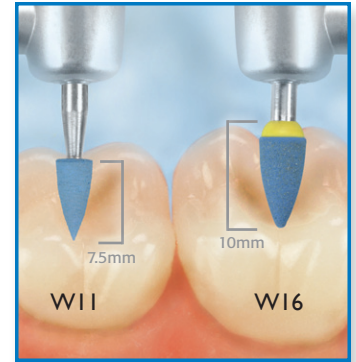
K0263
Dialite LD Intra-Oral
Adjusting, Finishing &
Polishing System

DIALITE® INTRA-ORAL & EXTRA-ORAL POLISHERS

Materials: Ceramic



The L20 Dialite ultra-thin discs or “Skinny’s”, are much thinner and smaller than anything in our current offering. Just 20 mm in diameter and 1 mm thick, this thin but sturdy disc is available in coarse, medium and fine grits and mounted on a straight handpiece mandrel. These discs are ideal for incisal cut back and polishing tight interproximal spaces.



The W11 small or “Mini” intra-oral Dialite points are smaller than our W16 point, making polishing occlusal surfaces that much easier. The size of a brownie/greenie point, they are 3 mm in diameter and 7.5 mm in length. These small points are available in coarse, medium and fine grits on a right-angle latch shank. Tight crevices and occlusal surfaces are easy to adjust and polish with this new mini point.

- Diamond impregnated three-step porcelain polishing system ideal for adjusting and polishing feldspathic porcelain restorations
- Recommended speed: Intra-Oral 5,000-7,000 rpm; Extra-Oral 7,000-10,000 rpm
- Sterilization: Autoclave

INTRA-ORAL MINI POINTS



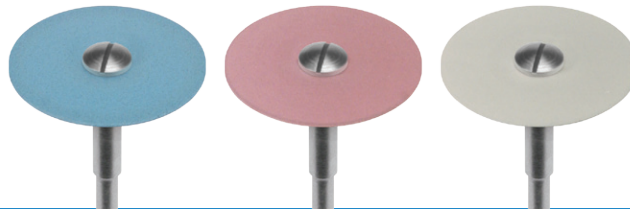
Order No.	W11DCHP.21	W11DMHP.21	W11DFHP.21
Head Size (1/10 mm)	030	030	030
Cutting Length (mm)	7.5	7.5	7.5
Grit	coarse	medium	fine

21 - RA - Right-Angle Latch (22 mm)

5/Pack

W11DCHP.21	W11DMHP.21	W11DFHP.21
------------	------------	------------

EXTRA-ORAL SKINNY DISCS



Order No.	L20DCHP.11	L20DMHP.11	L20DFHP.11
Head Size (1/10 mm)	200	200	200
Cutting Length (mm)	1.0	1.0	1.0
Grit	coarse	medium	fine

11 - HP - Straight Handpiece (44.5 mm)

1/Pack

L20DCHP.11	L20DMHP.11	L20DFHP.11
------------	------------	------------

POLISHING PASTE

Materials: Ceramic & Composite

DIALITE® INTRA-ORAL PORCELAIN POLISHING PASTE

As a market leader, Brasseler USA's Dialite porcelain polishers are highly regarded as the preferred porcelain polishing system by leading clinicians and lab technicians across the country. After continuous innovation, Brasseler USA has extended the Dialite family yet again by introducing Dialite Intra-Oral Porcelain Polishing Paste. Available in 4-micron grit, this diamond impregnated polishing paste is packed in a convenient 2 gram syringe, which will help you quickly and easily achieve the highest level of surface smoothness and shine. Use as a final step after polishing with Dialite HP (Feldspathic), Dialite LD (Lithium Disilicate) or Dialite ZR (Zirconia) to achieve the best results.



DPP4M
5023945U0
2 grams
4 microns

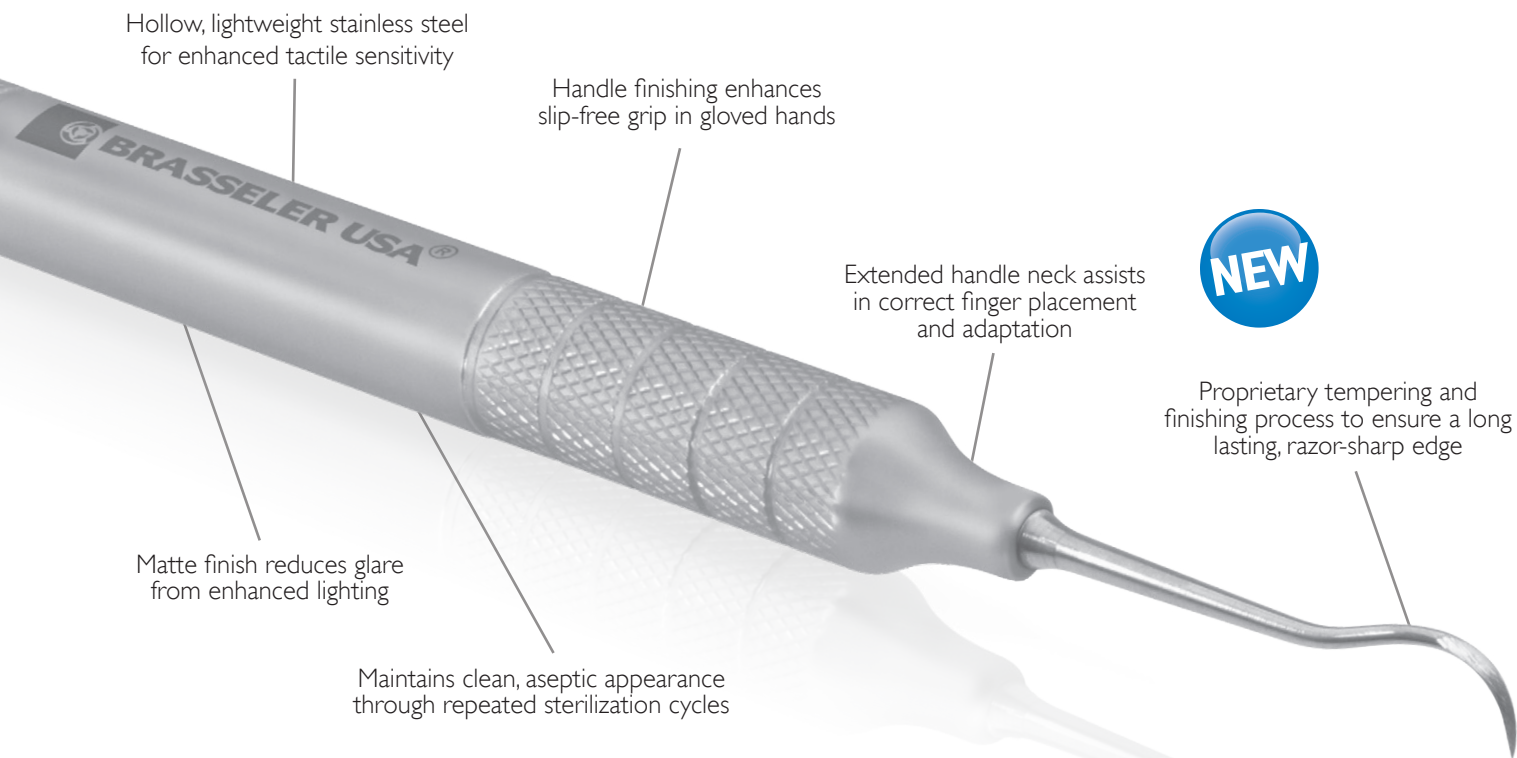
ET® COMPOSITE INTRA-ORAL POLISHING PASTE

For over 30 years, Brasseler USA's line of ET instruments and products have continued to revolutionize the world of composite restorations. Brasseler USA is now extending the line by introducing ET Composite Intra-Oral Polishing Paste. Available in 8-micron grit, this diamond impregnated polishing paste is packed in a convenient 2 gram syringe, which will help you quickly and easily achieve the highest level of surface smoothness and shine. Use as a final step after polishing with any of our wide range of composite polishers, including DiaComp® and ET® Illustra™, to achieve the best results.



ETCP8M
5023946U0
2 grams
8 microns

NEW BRASSELER USA® HAND INSTRUMENTS



Hollow, lightweight stainless steel for enhanced tactile sensitivity

Handle finishing enhances slip-free grip in gloved hands

Extended handle neck assists in correct finger placement and adaptation



Proprietary tempering and finishing process to ensure a long lasting, razor-sharp edge

Matte finish reduces glare from enhanced lighting

Maintains clean, aseptic appearance through repeated sterilization cycles

HYGIENE



SV3 Savannah-3 Scaler

- Thin contra-angle for better adaptation and enhanced posterior access
- Also recommended as instrument of choice for cement removal by leading clinician, Dr. John Kois
- Available in handles: #6, #8 (#6 shown)



SBH5/6 Barnhart 5-6 Curette

- Universal curette for medium calculus removal, also available in Rigid and Thin versions
- Available in #2, #4, #6 and #8 Cushion Grip (#6 shown)



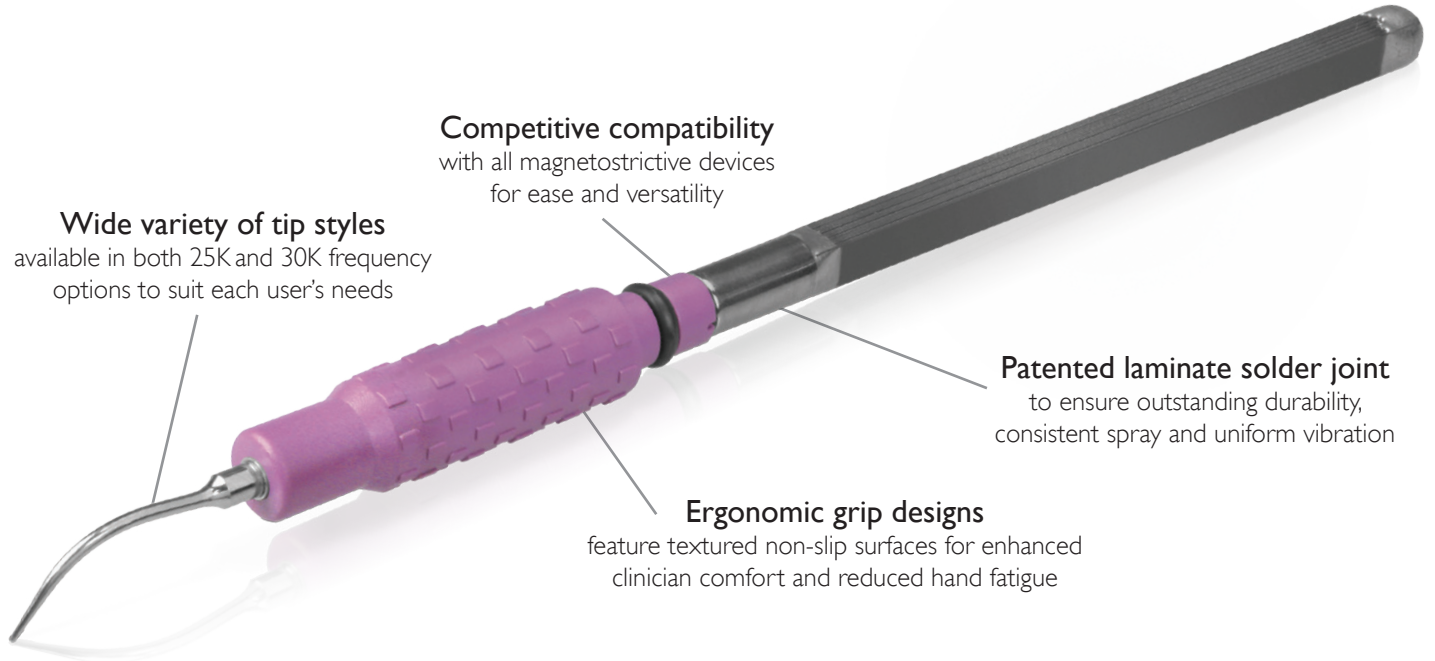
SG11/12 Gracey 11-12 Curette

- Gracey curettes are available in a variety of designs such as Long, Mini Long, Rigid, and new LTS.
- Available in handles: #4, #6 and #8 cushion grip (shown in #6)

ULTRASONIC INSERTS

HygienePro™ Ultrasonic Scaler Inserts

24 Ergonomic Scaler Inserts to Provide Greater Comfort and Efficiency for You and Your Patients.



Wide variety of tip styles
available in both 25K and 30K frequency options to suit each user's needs

Competitive compatibility
with all magnetostrictive devices for ease and versatility

Patented laminate solder joint
to ensure outstanding durability, consistent spray and uniform vibration

Ergonomic grip designs
feature textured non-slip surfaces for enhanced clinician comfort and reduced hand fatigue



#10
UNIVERSAL

Available in slotted and direct focus water delivery options.



#100
SLIM

Available in slotted and direct focus water delivery options.



#1000
TRIPLE BEND

Available in slotted water delivery option only.



#3
BEAVER TAIL

Available in slotted water delivery option only.

Is it time to replace your ultrasonic scaler inserts?

Did you know that only the last 1-2mm of an insert tip are the most active?

After 1mm of the tip is worn away, 25% of the tip's efficiency is lost.

After 2mm of the tip is worn away, 50% of the tip's efficiency is lost.

BC SEALER & BC POINTS

EndoSequence

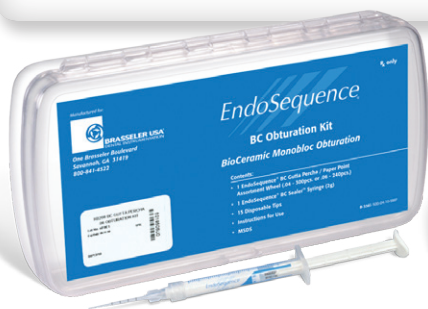
BC SEALER™ & BC POINTS™

THE "STATE-OF-THE-ART" IN ENDODONTIC OBTURATION HAS CHANGED.

Unlike conventional base/catalyst sealers, BC Sealer utilizes the moisture naturally present in the dentinal tubules to initiate its setting reaction. This highly radiopaque and hydrophilic sealer forms hydroxyapatite upon setting and chemically bonds to both dentin and to our bioceramic points (EndoSequence® BC Points™). BC Sealer is anti-bacterial during setting due to its highly alkaline pH and unlike traditional sealers, BC Sealer exhibits absolutely zero shrinkage!

HOW DOES YOUR CURRENT OBTURATION SYSTEM COMPARE?

	BC Sealer and Points	Your Current System
Highly Biocompatible and Osteogenic	✓	?
User Friendly (premixed syringe delivery)	✓	?
Absolutely Zero Shrinkage	✓	?
Sealer Chemically Bonds to both Dentin and to Obturation Material	✓	?
Cost Effective (considerably less expensive than thermoplastic carriers)	✓	?
Highly Antibacterial (+12 pH upon setting)	✓	?
100% Hydrophilic	✓	?
Highly Radiopaque	✓	?



ENDOSEQUENCE® BC OBTURATION KIT*
5019504U0 (.04)

ENDOSEQUENCE® BC SEALER:
5017560U0



Finally a sealer that is biocompatible, hydrophilic and antibacterial with no post-operative complications.



Dr. Richard Herman
Diplomat of the American Board of Endodontics
Adjunct Assistant Clinical Professor NOVA Southeastern University Post Graduate Endodontics



BT RACE™: BIOLOGIC & CONSERVATIVE

The unique, minimally invasive design of BT RaCe™ allows for the safe treatment of the majority of canals with just three instruments.

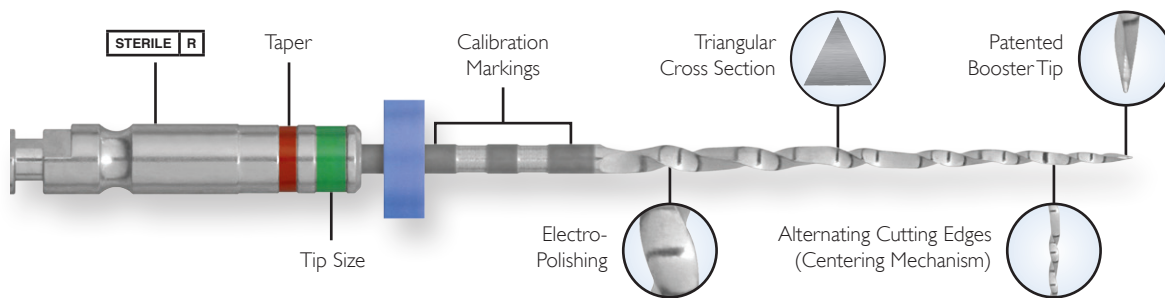
PHILOSOPHY

Research has shown that the natural apical diameters of most roots are surprisingly large and often contain biofilm (in infected cases). Biofilm is up to 1,000 times more difficult to eliminate than floating planktonic microbes.* BT RaCe is designed to help the practitioner safely and efficiently meet the biologically desirable apical sizes without compromising coronal tooth structure, thereby maintaining the strength of the tooth. This unique shaping sequence, together with irrigation and bonded obturation, results in optimal endodontic success and survivability of the tooth.

*Source: Chávez de Paz L, JOE. Volume 33, Number 6, June 2007: 652-662.

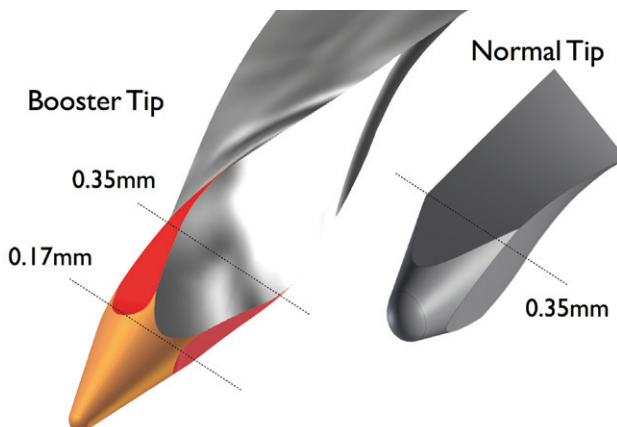
EXCLUSIVE ADVANTAGES

BT Race instruments have exclusive advantages including a patented alternating cutting edge/non-screw in design, electropolished finish, and triangular cross section. These features maximize flexibility, cutting efficiency/debris removal and safety.



THE PATENTED BT TIP

The booster tip allows for stress free apical progression and clearing of debris while respecting even the most challenging canal anatomy. The patented BT tip features 6 cutting edges, for increased cutting efficiency. This revolutionary shape allows for the use of fewer instruments per treatment.



STERILE R

BT RaCe instruments are sterile-packed in a cleanroom environment. A single-use policy is suggested thereby preventing cross-contamination and maximizing patient safety and office efficiency.

FAST SET PUTTY

EndoSequence

BC RRM-FAST SET PUTTY™

TIRED OF HASSLING WITH CONVENTIONAL ROOT REPAIR AND “DENTIN REPLACEMENT” MATERIALS?

Premixed with Superior Handling and Healing Properties, EndoSequence® BC RRM-Fast Set Putty™ is Ideal for All Your Pulp Capping and Root Repair Needs.

BC RRM-Fast Set Putty™ contains the same characteristics as our tried-and-true BC RRM-Paste™ and BC RRM-Putty™ but with a new fast set chemistry and an improved Sanidose™ syringe delivery. No mixing, no waste, no cross-contamination and, best of all, you get a consistently perfect unit dose of putty plug with every application. Our new BC RRM-Fast Set Putty™ is even more resistant to washout than our market-leading BC RRM-Putty™!

SUPERIOR HANDLING

- ✓ Moldable/Condensable Putty Consistency
- ✓ Premixed Sanidose™ Syringe Delivery
- ✓ Extremely Resistant to Washout
- ✓ Shortened Set Time (20 min)

EXCELLENT HEALING

- ✓ Highly Biocompatible
- ✓ Osteogenic
- ✓ Anti-bacterial (+12 pH)
- ✓ Non-Staining

BC RRM-FAST SET PUTTY™

5024200U0

1-.3g Syringe

MSDS

Instructions for Use



The accelerated hydration reaction of EndoSequence® BC RRM-Fast Set Putty™ improves treatment efficiency and resistance to washout. BC RRM-Fast Set Putty™ represents the next logical step in root repair and retro-fillings and exemplifies the benefits of pre-mixed bioceramics!



- Dr. Allen Ali Nasseh

Microsurgical Endodontics, Boston, MA, Clinical Instructor, Harvard School of Dental Medicine



SO SOPHISTICATED IT'S SIMPLE.™

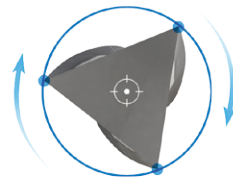
THE PATENTED ESX® FILE DESIGN*

THE PATENTED ACP™ (ALTERNATING CONTACT POINT) DESIGN

- Efficiently cleans three-dimensionally as the sharp cutting edges engage with the canal wall at opposing intervals.
- Asymmetrical flute design alternates between zero to three points of engagement.
- Moves debris coronally in a wave-like fashion.
- Allows the ESX to operate at a low torque setting and higher speed, thereby reducing stress on the file and root.

TRIANGULAR CROSS SECTION

- Allows for sharper cutting edges and a larger chip space for enhanced debris removal.
- Asymmetrical rotary motion removes debris coronally.



PROPRIETARY ELECTROPOLISHED FINISH

- Brasseler files are the only files in North America that are electropolished. This proprietary surface treatment improves resistance to cyclic and torsional fatigue.**

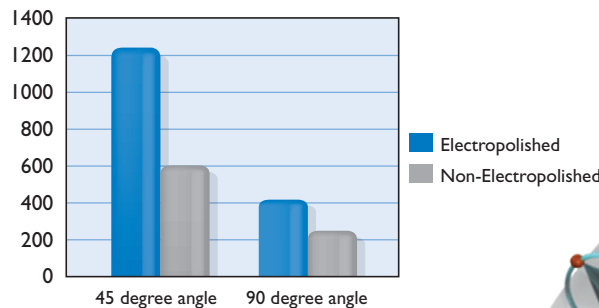


ESX® Electropolished



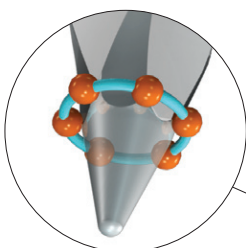
Vortex® Non-Electropolished

Rotation-to-Fracture for Electropolished and Nonelectropolished Instruments †



PATENTED BOOSTER TIP

- Maximizes safety and efficiency
- 6 cutting edges smoothly transition to a true reamer design
- Anti-ledging and anti-perfing patented centering mechanism
- Allows for fewer instruments and larger diameter increases
- It's like having two files in one



Scan code for a detailed product tutorial.



STERILE R

ESX® instruments are provided in individually perforated sterile blister packs.

* Patent pending N BR-11655CH

** Electropolishing:

†Anderson M, Price J, Parashos P. Fracture Resistance of Electropolished Rotary Nickel-Titanium Endodontic Instruments. *Journal of Endodontics*, 2007; 33, 1212-1216.

Bonaccorso A, Trip TR et al. Pitting Corrosion Resistance of Nickel-Titanium Rotary Instruments with Different Surface Treatments in Seventeen Percent Ethylenediaminetetraacetic Acid and Sodium Chloride Solutions. *JOE* 2008; 34: 208-211.

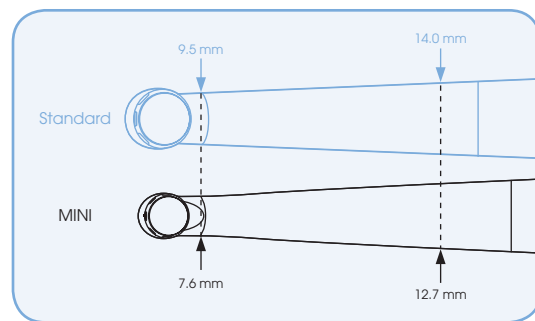
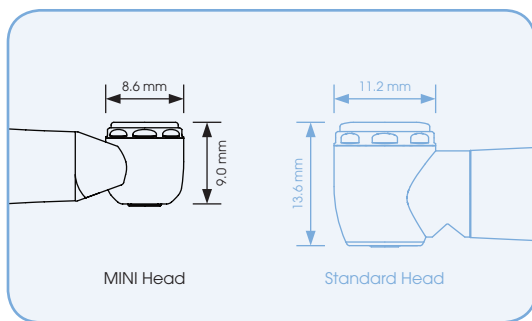
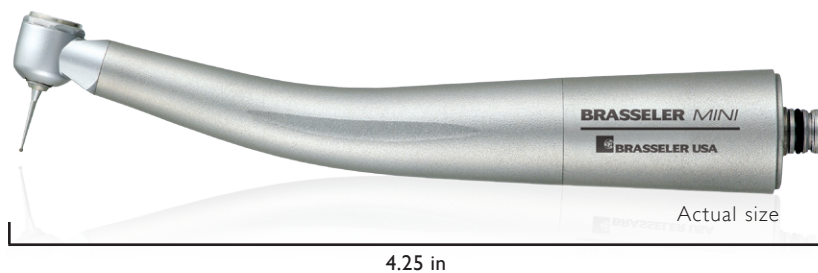
BRASSELER MINI

When "open wide" isn't enough.

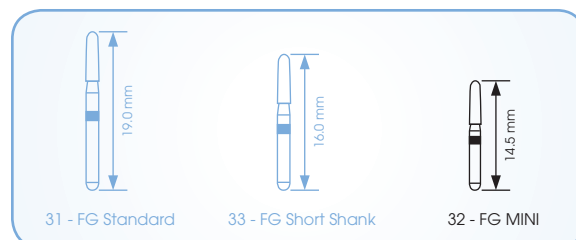
Small in size but big in performance, the Brasseler MINI high speed air handpiece offers a super miniature head size that provides maximum access and visibility. A revolution in handpiece design, the Brasseler MINI is a necessity for your limited access cases.

- *Lightweight* • *Fiber Optic Light* • *Easy to Replace Turbine*
- *Ceramic Ball Bearings* • *Clean Head System* • *Single Port Water Spray*
- *Quick Disconnect Swivel* • *Push Button*

5021970U0
Brasseler MINI



Recommended with Brasseler MINI burs:



FORZA V3

FORZA V3

PIEZO ULTRASONIC

Elegant and Intuitive. These two words best describe the new Forza V3 piezo ultrasonic from Brasseler USA. At only 33 grams, the slim, ergonomic design of the new Forza V3 handpiece provides excellent access while reducing hand fatigue. Stunning LED illumination from dual fiber optics delivers clearer vision and maximum visibility. Equally important is the Piezo Accelerator mode that instinctively provides additional power at the moment you need it most. The compact, space saving unit complements the simple-to-operate interface and can be easily installed in any dental operator. With a wide range of piezo ultrasonic tips available, the Forza V3 is ideal for a variety of clinical procedures including general scaling, perio and endo.

- Dual LED Fiber Optics
- Slim & Balanced Handpiece Design
- Compact Control Unit
- Simple Operation Control Panel
- General, Perio & Endo Applications
- Easy Power & Water Adjustment

Actual Size



The Piezo Accelerator mode instinctively provides additional power at the moment you need it most. Constantly running in the background, the Piezo Accelerator mode provides consistent power and stable frequency output.

5023152U0

Forza V3 LED Complete Set*



5023153U0

Forza V3 Non-Optic Complete Set*



Set Contains:

- Control Unit with Handpiece Cord
- Handpiece
- Control Unit Holder
- Handpiece Holder
- Water Filter Set

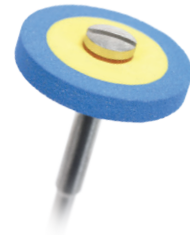
- Water Supply Connector
- Foot Control
- Tip Wrench with Torque Limiter
- AC Adapter
- Three Scaling Tips (G1, G4, G6)



DIAMONDS



POWER SYSTEMS



POLISHERS



VISION ENHANCEMENT



ENDODONTICS



SURGICAL



HAND INSTRUMENTS



PROCEDURE SYSTEMS



CARBIDES



LABORATORY



To order call 800.841.4522 or fax 888.610.1937.
In Canada call 800.363.3838 or fax 866.330.4454.
Visit our website at BrasselerUSA.com

By Your Side
in Dentistry



BRASSLER USA
DENTAL INSTRUMENTATION