

# HANDPIECES & SMALL EQUIPMENT



POWER. PRECISION. PERFORMANCE.



By Your Side  
in Dentistry



**BRASSELER USA**<sup>®</sup>  
DENTAL INSTRUMENTATION



**BRASSELER USA**  
DENTAL INSTRUMENTATION

Brasseler USA is an ISO certified healthcare company providing quality instrumentation to dental professionals. We are very pleased to bring you the entire range of Brasseler power system and accessories.

Brasseler USA takes seriously our responsibility – to the practitioner, hygienist, technician and, ultimately, the patient – to provide only the highest quality product at the best possible price. We accomplish this by adhering to strict quality assurance practices throughout the manufacturing process and by selling directly to you, the professional, delivering unsurpassed value.

We maintain a highly trained sales force throughout North America to provide solutions to your needs. Our representatives are extensively trained in dental procedures, enabling them to work with you as you use our products to increase your productivity. Adding value to your practice or laboratory is the primary responsibility of the Brasseler USA team. You can expect them to routinely meet your needs and exceed your expectations in the area of dental instrumentation.

We pride ourselves on being the top provider of quality instrumentation to the dental practitioner, hygienist and laboratory technician. No single manufacturer today has the concentrated instrumentation expertise and product assortment offered by Brasseler USA. Whatever your instrument needs might be: rotary diamonds and carbides, polishers, endodontics, hand instruments and power systems – Brasseler USA is by your side with a product that can help you complete the procedure faster and with superior results.

Simply put, Brasseler USA is 400+ employees dedicated to providing you, our customer, with all your dental instrumentation needs. We invite you to review this brochure offering Brasseler USA dental power systems and associated items. For more information or to schedule an in-office demonstration, simply call us toll-free at 1-800-841-4522.

By Your Side  
in Dentistry



## A Note to Our Valued Customers...

All Brasseler USA Dental Instruments are only available through Brasseler USA sales personnel. Our products are not sold through dental distributors. We brand and only sell our products through our Brasseler USA District Sales Managers, supported from our home office with our Inside Account Managers and Customer Service Representatives. Experience the value and service available only through our Direct Sales model...

### Buy Direct. Buy Brasseler USA.

#### BRASSELER USA FEATURES



**Ceramic Ball Bearings** are stronger and lighter than traditional stainless steel bearings resulting in less noise and extending the life of the turbine.



The easy **Push Button** feature eliminates the need for tools while maintaining increased chuck strength on the bur.



**LED Fiber Optics** last up to ten times longer than traditional halogen bulbs while producing a natural, whiter light for clearer vision.



Fully **Autoclavable** at 135°C while maintaining peak performance and durability.



The **D-Shield** technology protects titanium from scratches, increases durability and provides an ideal surface texture for an improved grip.



Full **360° Swivel** provides excellent maneuverability while reducing hand fatigue.



**Four Port Spray** delivers precise water spray to the bur and tooth surface.



Allows for the handpiece to be washed in a **Thermo Disinfector** prior to the autoclave cycle.



**Single Port Spray** delivers precise water spray to the bur and tooth surface.



ISO **E-Type** connections are becoming the dental industry standard and allow for the interchangeability between attachments and motors from other manufacturers.



**Titanium** is lighter, more durable and more resistant to corrosion than stainless steel.

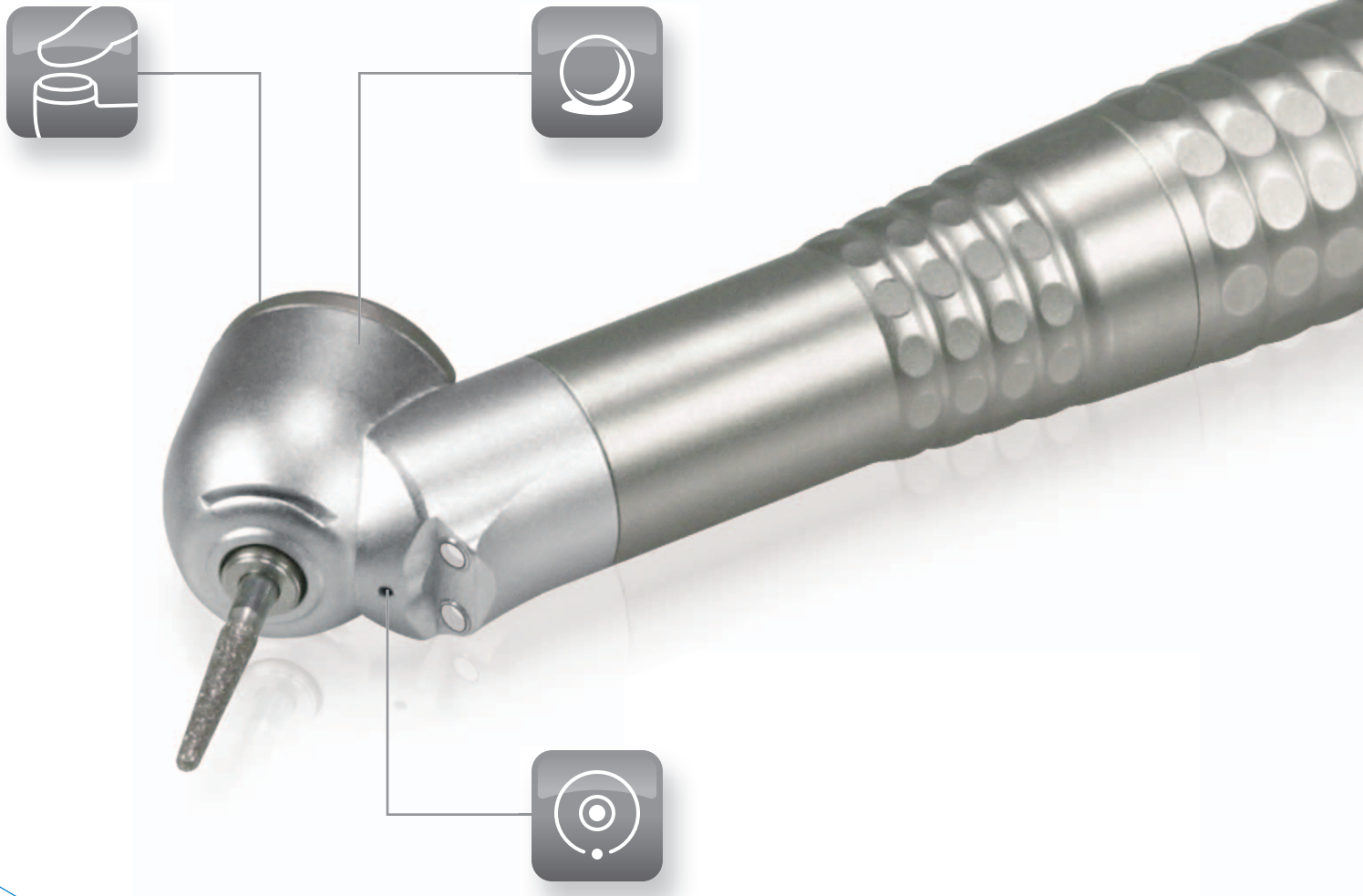


The **F Gear** design featured in the electric attachments improves efficiency resulting in a smoother, quieter and more durable handpiece.

# NL45S™ / N45S™

*The Standard in Safe Access...*

The NL45 and N45 handpieces from Brasseler USA each have a unique 45 degree angle head. This design allows for maximum visibility and posterior access and is ideal for treating impacted molars. Equally important is the special design that delivers a water stream, not a mist, directly to the tip of the bur. Available in optic and non-optic models, the NL45 and N45 handpieces deliver powerful torque, feature ceramic ball bearings and a push button head, all in a lightweight design.





**NL45S - Standard Head Size**

**Item Number: 5021271U0**

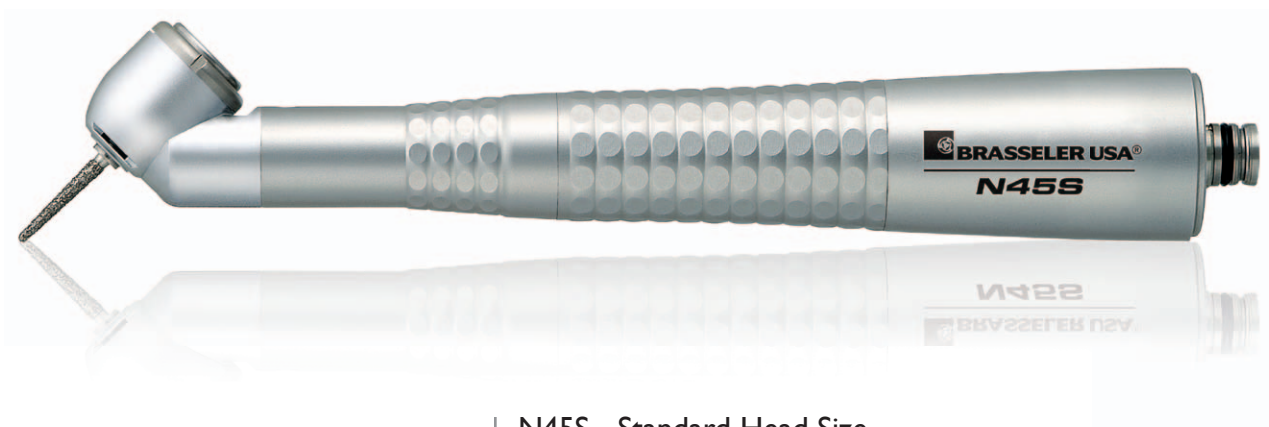
For Brasseler Coupler Connections

Fiber Optic

16.0 Watts of Power

Max Speed: 450,000 rpm

1 Year Warranty



**N45S - Standard Head Size**

**Item Number: 5021272U0**

For Brasseler Coupler Connections

Non-Fiber Optic

16.0 Watts of Power

Max Speed: 450,000 rpm

1 Year Warranty