

Technique Guide:

# New Horizon Composite Finishing System

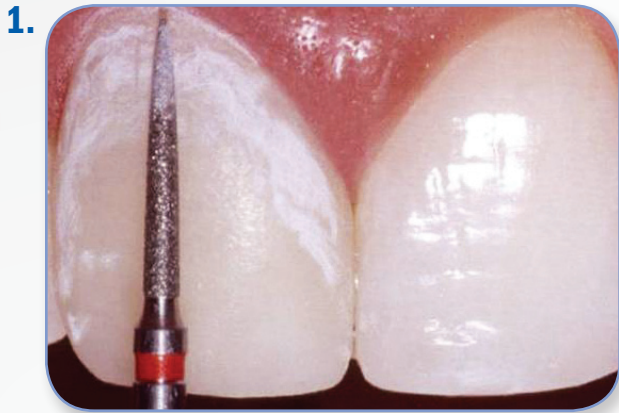
*According to Frank J. Milnar DDS, AAACD*



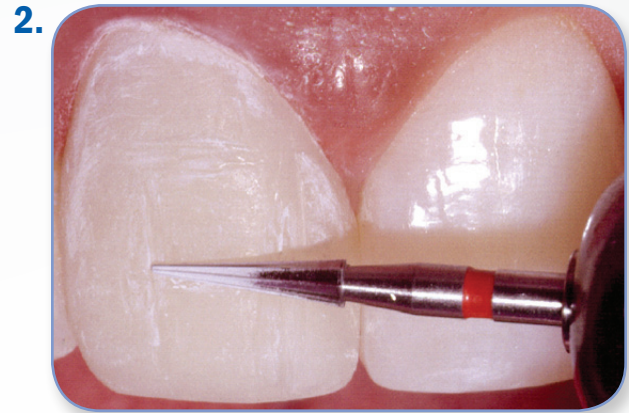
**BRASSELER**  
USA®

# The New Horizon Composite Finishing System – According to Frank J. Milnar DDS, AAACD

This new system offers the complete array of artist tools to create natural esthetics. The aspiring clinician can produce contours, finishing, polishing and final luster with illustration and a step-by-step approach for predictable outcomes.



The 8888.012 is used to create tertiary anatomy and surface texture (especially in the Cervical third)



The ET6 is used for concavities and anatomical characteristics. The ET9 is used for surface texture



The ET9F create tertiary anatomy and surface texture



The 7901 or 8889.009 is used for refining gingival margins and tertiary anatomy



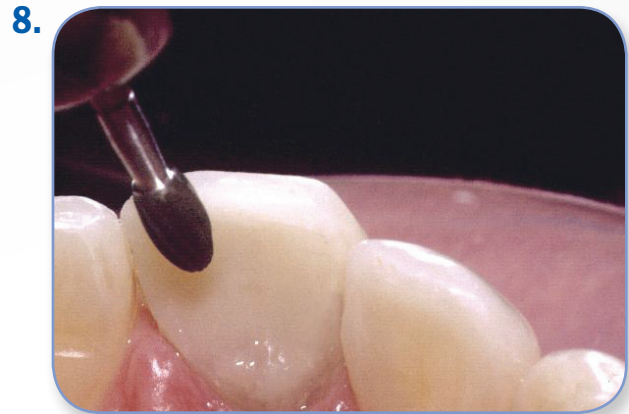
661 Green stone is used at 30,000 RPM to create a uniform final diffused surface prior to polishing



After using 661 Green stone



The 7404 is used primarily for finalizing contours on lingual surfaces and creating secondary anatomy on facial surfaces



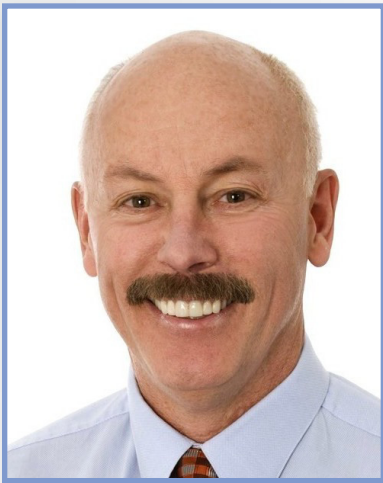
The OS1F is used primarily for creating lingual anatomy and contours



All pre-polishing is completed using the FLDC5M medium green Diacomp FeatherLite wheel while using in a incisal-gingival and mesial-distal pattern at 6,000RPM



All final polishing is completed using the FLDC5 fine gray Diacomp FeatherLite wheel while using in a incisal-gingival and mesial-distal pattern at 3,000RPM



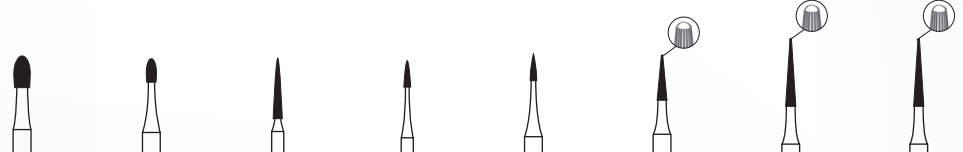
# Frank J. Milnar DDS, AAACD

Frank J. Milnar DDS, AAACD is a graduate of the University of Minnesota, School of Dentistry. He is an Accredited member of the American Academy of Cosmetic Dentistry and a Board Examiner for Accreditation. Dr. Milnar maintains a full-time practice in St. Paul, Minnesota emphasizing appearance related dentistry. He has published numerous articles about the direct placement of composites, shade selection and porcelain materials and is on editorial review boards for dental journals. Dr. Milnar is co-founder of the Minnesota Academy of Cosmetic Dentistry and has lectured extensively within the U.S. Armed Forces as well as internationally on the subject of direct composite restorations, shade selection and porcelain materials. He has been voted “Top Dentist” and voted into the “Top Dentist Hall of Fame” for the last five years by his peers in the *Minneapolis/St. Paul Magazine*. He has been voted by *Dentistry Today* as one of the top 100 dentists contributing to dental education. Most recently, Dr. Milnar was nominated to the University of Minnesota School of Dentistry Continuing Education Advisory Board.



## K0097

## Minimally Invasive System



US No.	OS1F	7404	—	—	7901	ET6	ET9	ET9F
Figure No.	H379F	H379	8888	8889	H246	H134	H135	H135F
Head Size (1/10 mm)	023	014	012	009	009	014	014	014
Cutting Length (mm)	4.2	3.1	8.0	3.5	3.6	6.0	9.0	9.0
Grit	Extra-Fine	Fine	Fine	Fine	Fine	Fine	Fine	Extra-Fine
Shank Type	FG	FG	FG	FG	FG	FG	FG	FG
Quantity	1	1	1	1	1	1	1	1

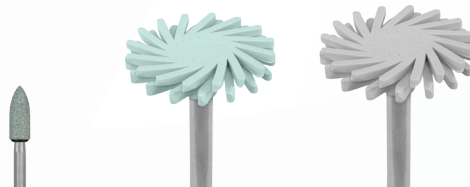


Figure No.	661	FLDC5M	FLDC5
Head Size (1/10 mm)	027	140	140
Cutting Length (mm)	7.0	1.6	1.6
Depth Cut (mm)	—	—	—
Grit	Fine	Medium	Fine
Shank Type	FG	RA	RA
Quantity	1	1	1