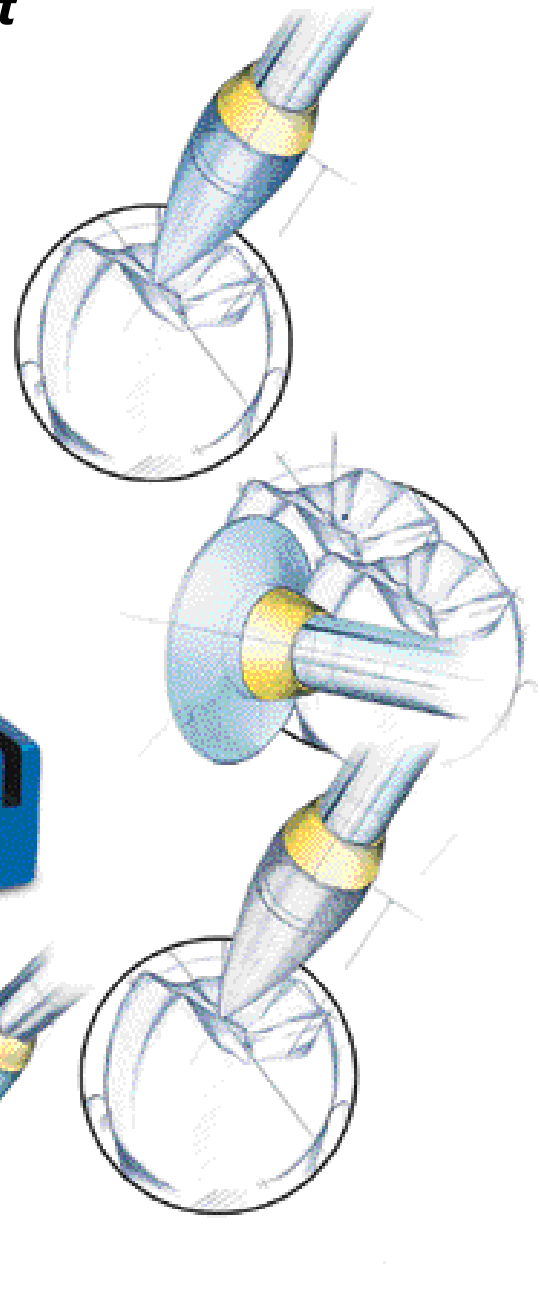


# ***Diacomp® Composite Polishing Kit***



## ***Technique Guide***

***Consistently. Rationally. Systematically.***

***Buy Direct. Buy Brasseler USA.***



# Composite Polishing

The Brasseler USA Diacomp® Composite Polishing Kit is a simple two-step system for the polishing of a wide variety of composite materials. Points, discs and cups allow access in areas difficult to polish with a vinyl-disc system. High efficiency polishers included will finish all types of composite restorations, polymer glass, and are suitable to polish enamel after orthodontic debonding.

## Two-step composite polishing

After completing initial contouring of a composite restoration using finishing carbides or diamonds, the green medium grit Diacomp® polisher is used to remove scratches and satin shine composite surfaces. The second step is the gray fine grit Diacomp® polisher which will leave a high shine finish (wet look). Polishers may be used dry with a feather touch, or wet. The diamond impregnated polishers are most efficient at lower speed ranges (5,000-6,000 rpm) and with light pressure.

### Step 1

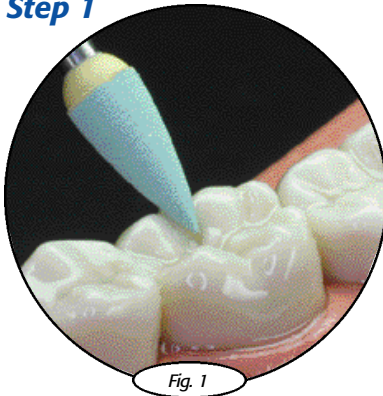


Fig. 1

The initial polishing is started with a green Diacomp® DC1M polishing point. Occlusal developmental grooves, fossas and incline planes are very accessible to the pointed design and overall contour of this polishing point. For best results, one should place the point in the central fossa and work outward.

### Step 2

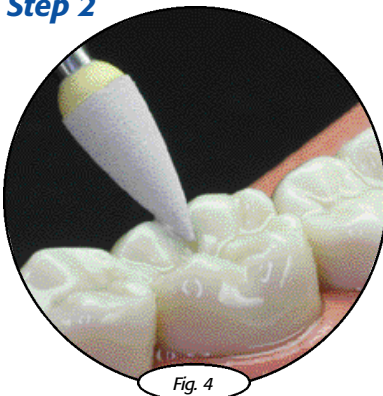


Fig. 4

Final polish is accomplished with a gray Diacomp® DC1 polishing point for pits, fissures and incline planes on the occlusal surface of composite restorations. A feather touch should be used so occlusal anatomy is not removed during the final polishing. Place the point in the central fossa and work outward for best results.

### Step 1

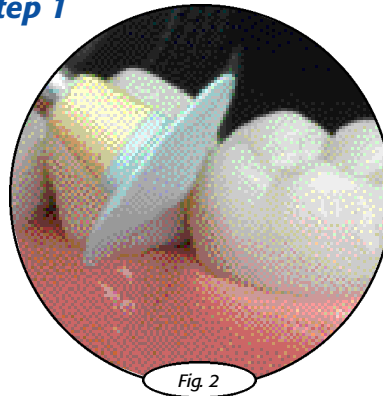


Fig. 2

The thin green knife-edge DC2M design allows easy access to proximal, buccal and lingual surfaces which can be difficult to reach when polishing composite restorations. Placing the knife edge gingivally and working occlusally will produce the best results.

### Step 2

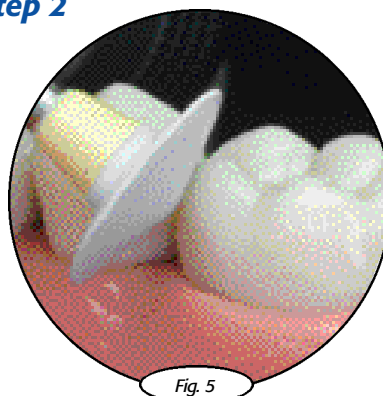


Fig. 5

The gray knife-edge DC2 polisher is used wet or dry with a feather touch motion. The knife-edge can be placed interproximally (buccal or lingual) and worked occlusally to polish proximal surfaces and marginal ridges.

### Step 1

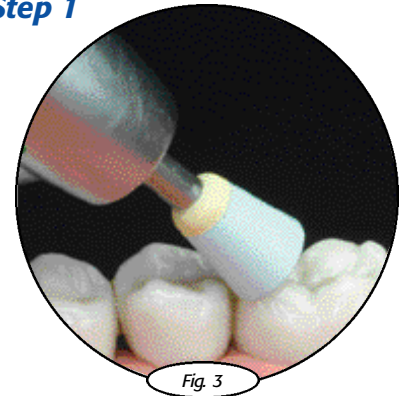


Fig. 3

The green DC3M cup easily pre-polishes facial, lingual and marginal ridge surfaces of composite restorations. The flexibility of these cups adapt to the exact contour of the restoration.

### Step 2

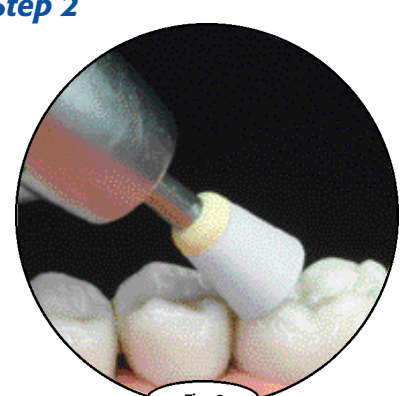


Fig. 6

The gray DC3 polishing cup is adaptable to the contour of the tooth and restoration so the morphology that has been developed will be maintained during the final polishing of the restoration. Placing the cup with feather touch on the tooth structure and restoration (where possible) will maintain contours developed and place the final wet look finish.

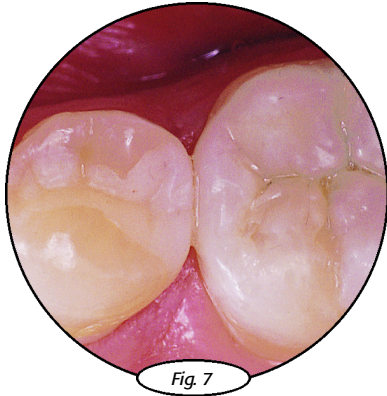


Fig. 7

The final direct composite restoration for tooth #20 with high-shine (wet look) after sequential use of the Diacomp® Composite Polishing kit.

## Polishing Composite Restorations

### Well polished restorations

- Resist the formation of plaque and calculus
- Resist stain
- Easily cleaned
- Minimizes irritation of soft tissue
- Considerably increases the durability and service life of restoration

## Diacomp® Composite Polishing Kit



144.21



Order No.		DC1M	DC2M	DC3M	DC1	DC2	DC3
Size	Ø 1/10 mm	4.0	9.5	6.0	4.0	9.5	6.0
L mm		10.0	3.0	7.8	10.0	3.0	7.8

### Diacomp® Composite Polishing Kit

Developed by Brasseler USA

RA Latch 21 —  
Ø2.35mm x 22mm L



Two-step system for polishing composite restorations.

## Additional Usage

**Orthodontic debonding - After the removal of orthodontic appliances the Diacomp® Polishing Kit is ideal for:**

- final removal of bonding material
- polishing of enamel surfaces

## Care & Maintenance of Polishers

### Storage, Cleaning & Autoclaving

- » Polishers should be kept in original packaging at room temperature.
- » After use in the patient's mouth, the following steps are recommended:
  - Disinfect
  - Clean
  - Rinse
  - Dry
  - Sterilize

» The disinfecting and cleaning solutions must be suitable for polishers. Classic bur bath solutions are often based on alcohol or alkaline. Aggressive solutions and excessive exposure time can destroy the polisher. The prescribed concentration of the solution and the mix proportion must be exactly as recommended by the manufacturer. Failure to follow directions will result in swelling, softening and warping of polishers.

» Sterilization in a steam autoclave at 132-135 degree C or 270-275 degree F, following until instructions is recommended. Chemiclave or hot air sterilization will severely damage polishers and are therefore unsuitable for all Brasseler USA polishers.



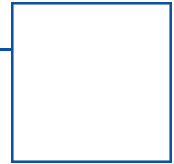
**Brasseler USA**

One Brasseler Blvd.  
Savannah, GA 31419

**Toll Free: 800.841.4522**

Phone: 912.925.8525

Fax: 888.610.1937



***Buy Direct. Buy Brasseler USA.***

©2002 Brasseler USA

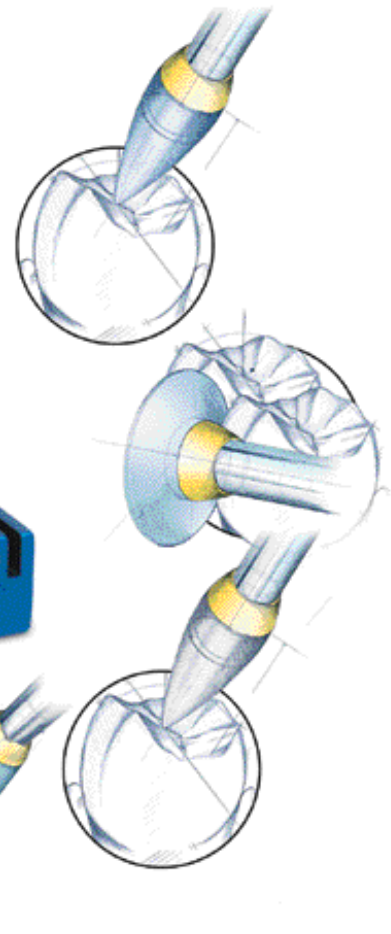


**BRASSELER USA**  
DENTAL ROTARY INSTRUMENTS

B-1943-07.02-5M-DHH

***Diacomp® Composite Polishing Kit***

***Technique Guide***



***Buy Direct. Buy Brasseler USA.***